

Updated 10/30/2014

## **ATTACHMENT A**

# **OAKLAND UNIVERSITY**

## **Fiscal Year 2016 Five-Year Capital Outlay Plan**

## Table of Contents

<b>I.</b>	<b>Mission Statement</b>	<b>p. 3</b>
<b>II.</b>	<b>Instructional Programming</b>	<b>p. 3</b>
	An Engaged University	p. 3
	A Leading University	p. 4
	A Growing University	p. 4
	Applied Research and Economic Development	p. 5
	Partnerships	p. 7
	Instructional Technology	p. 8
	Technological Enhancements	p. 10
	Cultural and Performing Arts	p. 11
	Community Outreach	p. 11
	Academic and Student Life Enhancements	p. 12
	Degree Programs	p. 14
<b>III.</b>	<b>Staffing and Enrollment</b>	<b>p. 24</b>
	Figure 1 - Faculty and Staff Full Time Equivalent	p. 24
	Figure 2 - Student Credit Hours	p. 25
	Figure 3 - Degrees Awarded by Program	p. 26
	Figure 4 - Enrollment Trends	p. 27
	Figure 5 - Enrollment Projections	p. 28
	Figure 6 - General Fund Sq. Feet per Student in Michigan	p. 29
	Future Staffing Needs	p. 30
	Average Class Size	p. 30
<b>IV.</b>	<b>Facility Assessment</b>	<b>p. 30</b>
	Utilization Rates	p. 30
	Mandated Standards	p. 30
	Functionality	p. 30
	Replacement Value of Facilities	p. 32
	Utility Systems Condition	p. 32
	Facility Infrastructure Condition	p. 33
	Land	p. 33
	Buildings Obligated to the State Building Authority	p. 33
	Classroom Utilization Reports	p. 34
	Facility Condition Assessment	p. 54
<b>V.</b>	<b>Implementation Plan</b>	<b>p. 65</b>
	State Funding Request	p. 65
	University Funded Priorities	p. 65
	Plant Renewal/Deferred Plant Renewal	p. 68

## **I. Mission Statement**

“As a state-supported institution of higher education, Oakland University has a three-fold mission. It offers instructional programs of high quality that lead to degrees at the baccalaureate, master’s, and doctoral levels, as well as programs in continuing education; it advances knowledge and promotes the arts through research, scholarship, and creative activity; and it renders significant public service. In all its activities, the University strives to exemplify educational leadership in a diverse and inclusive environment.”

## **II. Instructional Programming**

Oakland University (Oakland, University or OU) is a doctoral/research University located in Rochester, Michigan, within Oakland County. Through unique and distinctive academic experiences, Oakland is preparing students to make meaningful and substantial contributions to the workplace, academia and the community.

### **An Engaged University**

Oakland University is the only comprehensive, doctoral-level university located in Oakland County, Michigan. Recognized as one of the country’s 90 doctoral/research universities by the Carnegie Foundation for the Advancement of Teaching, the University offers students opportunities to work directly on research projects with expert faculty.

Through a multitude of partnerships with hospitals, Fortune 500 companies, individuals, cities, government agencies and educational institutions, Oakland helps communities solve problems and build thriving, sustainable businesses. These associations reward students with internship and co-op opportunities and provide University researchers access to the latest technology tools. Oakland’s leadership with these partnerships also significantly impacts economic development efforts and commercialization opportunities in the region.

Oakland, in partnership with Beaumont Health System, opened the first M.D.-granting medical school in Oakland County with a class of 50 inaugural students in August 2011. Enrollment in the school rose to 323 in the fall of 2014. The first new medical school started in Michigan in a generation, the Oakland University William Beaumont School of Medicine (OUWSOM) is expected to help boost the local and regional economies by generating new jobs and attracting medical, business and academic leaders from around the world and aid in the transition from a manufacturing to a knowledge-based economy.

The medical school trains physicians to practice 21st century medicine with an emphasis on research, technology, preventive and pre-symptom medicine, treatment and management of chronic disease, and teamwork. OUWSOM promotes applied research “from the bench to the bedside,” assuring that scientific discoveries and new technologies are able to directly benefit patients in the most rapid time frame possible.

Oakland has a strong undergraduate program in the basic sciences and is widely recognized for excellence in the biomedical sciences and other health care-related programs. It has a School of Nursing, School of Health Sciences, renowned Eye Research Institute, and highly regarded programs in bioengineering, informatics and nanotechnology, as well as chemical toxicology, health and environmental chemistry, medical physics and biological communication. The Schools of Nursing and Health Science are housed in the Human Health Building, which opened in August 2012.

Oakland University's other professional schools — Business Administration, Education and Human Services, Engineering and Computer Science, and the College of Arts and Sciences — have been recognized nationally for various accomplishments.

### **A Leading University**

Oakland is committed to providing undergraduate and graduate education marked by academic excellence, unique opportunities and beyond-the-classroom experiences in preparing future leaders, advancing research frontiers and engaging with business, educational and community partners for the benefit of the region and beyond.

Through the dedication of inspired faculty, Oakland prepares students to make meaningful and substantial contributions to society and the workplace by producing graduates who can think critically and creatively, communicate effectively, navigate and use information technology, and interact well with others.

In addition to equipping graduates with a broad base of knowledge and top-notch intellectual and experiential opportunities, Oakland is equally dedicated to the development of students in all aspects of their lives. Through a carefully thought-out collection of campus life experiences, the University gives students opportunities to conduct research and participate in internship and co-op experiences.

### **A Growing University**

Oakland is among the fastest growing public universities in the state with student enrollment projections through 2020 including:

- continued growth
- increased representation of minority students
- an increase in graduate students responding to new program development, greater outreach activities and advanced technology-assisted education delivery

Over the last 15 years, the University has realized a 41 percent increase in enrollment. It has added more than 65 new degree programs since 1995 to strengthen educational offerings.

Oakland has continued to keep pace with growth by providing new and advanced academic, research and support facilities. Recent capital projects have included:

- renovation of Hannah Hall laboratories
- renovation of O'Dowd Hall to provide additional classrooms and space for the Oakland University William Beaumont School of Medicine
- renovation and restoration at Meadow Brook Hall
- creation of the First Year Advising Center
- construction of the Human Health Building
- construction of the Engineering Center
- construction of a second parking structure with 1,245 spaces
- construction of the 504 bed Oakview residence hall, which includes a new home for the Honors College
- upgrades to the Recreation and Athletics Outdoor Complex, creating a track and field complex, tennis courts, and synthetic turf soccer fields
- construction of an Athletic Dome through a public private partnership to provide an indoor athletic practice facility (to be completed in December 2014)
- completion of the 151 foot tall, 49 bell Elliott Tower (100% funded by Hugh and Nancy Elliott)
- a new headquarters building for Facilities Management

A campus master plan accounts for expected growth and includes:

- a third parking structure
- housing facilities to expand the number of beds on campus from 2,700 to 3,800
- infrastructure improvements
- the identification of potential building sites
- a research and development park
- a new humanities facility

Several upgrades, renovations and technological improvements to various classrooms, laboratories and common areas were recently accomplished. Primary laboratories to receive complete renovation were in chemistry, biology, physics, and art and art history – all programs which have experienced large increases in student enrollment or are key components of Oakland's biomedical and health care academic offerings.

### **Applied Research and Economic Development**

Oakland offers knowledge, resources and programs that help companies grow. With its research labs, facilities, faculty and students, the University assists companies in transforming ideas into new business developments, turning dreams into reality and giving vitality to vision. At the OUInc and OU-Macomb Business Incubators, the University is committed to assisting startups and spin-offs to locate and secure technology development, business planning and capital acquisition, as well as providing opportunities for the licensing of Oakland University's intellectual property. To foster emerging discoveries, the University features several noted research centers, including the:

- Automotive Tribology Center (ATC)
- Center for Applied Research in Musical Understanding (CARMU)
- Center for Autism Research, Education and Support (OUCARES)
- Center for Biomedical Research (CBR)
- Center for Integrated Business Research and Education (CIBRE)
- Center for Robotics and Advanced Automation (CRAA)
- Center for Social and Behavioral Research (CSBR)
- Clean Energy Research Center (CERC)
- Eye Research Institute (ERI)
- Fastening and Joining Research Institute (FAJRI)
- Galileo Institute for Teacher Leadership
- Ken Morris Center for the Study of Labor and Work
- Prevention Research Center (PRC)
- Institute for Stem Cell and Regenerative Medicine (ISCRM)

**OU SmartZone Business Incubators:** OUInc is a SmartZone Business Incubator/Accelerator in collaboration with the City of Rochester Hills and Michigan Economic Development Corporation, and partners with Oakland County and Automation Alley. OUInc provides entrepreneurial resources and strategic business solutions for developing business ventures and accelerates ideas to market. It fosters a healthy environment for the growth of new startup companies and provides support for existing entities through its facility and resources. The OUInc facility provides business resources, including those offered by the Clean Energy Research Center and the Integrated Resource Center, as well as access to the expertise and skills of staff, faculty, students and corporate partners.

The Macomb-OU Incubator provides entrepreneurial resources, business solutions, and access to student interns and proactive support to businesses at every stage in an effort to help startups on their path to success. The goal of the incubator is to create jobs and advance the development of business by way of identifying sources of necessary financing for growth; helping develop business strategy; consulting; and providing access to appropriate rental space, shared business services, equipment and technology support services in the areas of defense, homeland security, advanced manufacturing and technology. It is a part of the Velocity Collaboration Center, a joint venture between Oakland University, Macomb County and the City of Sterling Heights.

**Fastening and Joining Research Institute (FAJRI):** A collaboration between Oakland University, the U.S. Congress, the U.S. Army Tank Automotive Research and Engineering Center (TARDEC), the National Science Foundation and Fiat Chrysler Automobiles, FAJRI is an externally funded, academic, nonprofit research facility that is solely dedicated to exploring fundamental and applied research to develop and disseminate new technology for the fastening and joining of materials such as metals, composites, polymers and biomaterials.

**Center for Robotics and Advanced Automation:** Funded by the National Science Foundation, the Big Three automotive companies and the Department of Defense, the center works on smart control technology with industrial and defense applications, intelligent

robotics, homeland security technology, suspension systems, digital shearography, and global satellite communication technology and systems.

**Eye Research Institute (ERI):** This unique center of ophthalmic research collaborates with the department of ophthalmology at Beaumont Health System on research and provides a joint ophthalmology residency and fellowship program. Since 1968, ERI scientists have received more than \$50 million in support from private and federal health agencies.

**Center for Biomedical Research:** This center provides core facilities and pilot funding for the applied biomedical research efforts of Oakland University's life scientists. Key research includes eye diseases, chemical toxicology, medical physics and biological communication.

### **Partnerships**

Oakland has leveraged its unique Auburn Hills/Rochester Hills/Rochester location in the heart of Michigan's technology and automotive corridor by forging strategic partnerships with hospitals, Fortune 500 and international companies, individuals, cities, government agencies and educational institutions located as near as Southeast Michigan and as far as other countries. The benefits of these associations are far-reaching: students are rewarded with internship and co-op opportunities, University researchers have access to the latest technology tools, and the region benefits through new business opportunities and a stronger economy.

**Eugene Applebaum College of Pharmacy and Health Sciences:** An alliance between Oakland University's School of Health Sciences and Wayne State University (WSU) provides Oakland's undergraduates a unique opportunity to earn a doctorate in pharmacy. Students can earn their bachelor's degree at OU taking pre-pharmacy courses. During their senior year at OU, students take pharmacy classes at WSU. Their senior year at OU is also their first year at WSU, giving students the opportunity to complete a doctoral program in seven years instead of eight, saving both time and money.

**Crittenton Hospital Medical Center:** Crittenton Hospital Medical Center has funded a \$2 million endowed professorship in Oakland University's School of Nursing that is changing the clinical education and training of nursing students. The nursing professorship conducts patient-focused research on the science and best practices of nursing, an area that has not received much attention to date. Students in the program conduct all of their clinical rotations at Crittenton Hospital Medical Center using the relationship-based care (RBC) model. RBC moves from an individual expert dynamic to one of engaging patients, identifying options, relaying experiences and empowering patients and their families to make the best treatment decisions.

**OU Anton/Frankel Center:** Oakland University expanded its reach in Macomb County with the opening of the Anton/Frankel Center (AFC) in fall 2011. With 25,422 square feet of space to house classrooms, offices for advising, student support services, faculty and staff, the AFC signals OU's continued commitment to bringing exceptional academic opportunities to the

people of Macomb County. Programs offered at the AFC include bachelor's degrees in criminal justice, psychology, marketing and social work; and master's degrees in public administration and business administration.

**The University of Botswana:** Oakland University's Department of Counseling in the School of Education and Human Services, in partnership with the University of Botswana (UB), provides student and faculty exchanges, video conferences and partnerships in research, scholarship, teaching and service.

**Israel's Max Stern Academic College:** Oakland University offers global experiences for students and faculty through a myriad of overseas programs including a partnership with Max Stern Academic College in Emek Yezreel, Israel. Students and faculty on both campuses will experience different cultures through research opportunities, academic coursework and student life.

**Cooley Law School:** Oakland University and Cooley Law School have enjoyed a successful partnership since 2002, when Cooley first offered its Juris Doctor (JD) law program on Oakland's campus. The Thomas M. Cooley Law School-Auburn Hills campus is the exclusive law school partner of Oakland University.

**The Pawley Learning Institute:** Established through a gift from Dennis Pawley, an OU alumnus and former chair of the OU Board of Trustees, the Pawley Learning Institute provides instruction and research on concepts and training that improve organizational practices in business, education and public service sectors.

### **Instructional Technology**

Access to user friendly instructional technology resources in the classroom are a standard expectation of Oakland's faculty and students. All general purpose classrooms and a growing number of conference rooms and labs are equipped with enhanced instructional technology resources.

University classrooms are equipped with the following:

- Multimedia workstation containing: a PC computer hardwired to campus network; a digital document camera; an electronic whiteboard; a DVD player; an interface to plug in a user provided laptop computer or mobile display, an interface to plug in an accessory analog audio/video device; sound system; and an electronic media control system
- Ceiling mounted video/data projection system connected to the multimedia workstation
- Wireless network access
- A lecture capture system (Panopto) is also available to record classroom instruction and post recordings online for student review
- Room microphones and video cameras are currently being added



Oakland continues to expand its course offerings via distance education. The three modes of delivery include live interactive video, synchronous and asynchronous web-based learning opportunities.

The Internet is the current transmission vehicle for the University's live two-way compressed video course offerings. The ongoing development and interest in online learning courses and programs has reduced the need to utilize the more expensive live interactive video distance learning model and thus there is less of a need to maintain high cost video conferencing appliance based systems and resources.

A software based video collaboration tool called WebEx is also available for the University community to conduct business at a distance. These types of technologies save time and money by providing a communications tool that allows for the sharing of voice, video and content between two or more computers or mobile devices. The growth in web based learning models will continue to expand in the foreseeable future.

Oakland University supports a web-based Course Management System (CMS) utilizing Moodle. Moodle can be used as a full "web based" solution where no face-to-face teaching is required or as a "web supplemented" course resource that enhances the standard face-to-face classroom contact between faculty and students. Moodle offers online activities such as discussion boards, chat, quizzes, grade book, file storage and display, RSS feeds, wikis, journals, workshops, automated lessons. Moodle will also be the portal to access lecture capture recordings. Another separate instance of Moodle is supported via e-Portfolio. It includes digital space for student career Portfolios. A third instance of Moodle is called e-Space that contains department assessment activities, research, academic committees, advising, and other miscellaneous academic activities.

Another teaching tool being utilized is Second Life, an experimental island where several faculty meet their classes.

During the Winter 2014 term, Oakland offered 256 course sections that are fully online and approximately 65% of all course sections are providing some level of web supplemented activity. Oakland also offers fifteen online degree and certificate programs.

Scantron machines, i-Clicker, and other software are supported centrally for grading exams and processing course evaluations.

## **Technological Enhancements**

Oakland University is dedicated to enhancing education through the use of contemporary and emerging technologies and continues to commit significant resources to technological enhancements, including:

- Complete administrative software suite.
- On-line registration.
- Extensive wired and wireless network to all classroom buildings and surroundings.
- Elliott Hall of Business and Information Technology, a 74,000-square foot, technology-rich facility.
- The Pawley Hall of Education & Human Services Building with 24 enhanced technology classrooms and an all digital video recording, playback and archive system in the School's Counseling Center.
- Interactive television and video conferencing capability to supplement instruction and administrative program activity.
- On-line web-based course offerings to students utilizing Moodle.
- Other teaching and learning software, such as Panopto, CourseWeb, Scantron, Turnitin, Second Life, Camtasia, I-clicker, and Visual Communicator.
- An Information Commons in Kresge Library with a significant number of computer work stations for the patrons.
- A remodel of O'Dowd Hall was completed to become the initial home of the new OUWBSOM, including the addition of many new technology enhancements.
- An off-site School of Nursing instructional center in the Detroit based Focus Hope facility.
- Renovation of the two-story Anton/Frankel Center in Mount Clemens provides Oakland with a third Macomb County location with an additional 25,422 square feet of space. The new center will provide classrooms as well as offices for advising, student support services, faculty and staff.
- Major classroom renovation projects that included significant technology enhancement in older campus buildings continue to be a priority objective.
- A new Human Health Building (HHB) was opened providing the University community with the most up-to-date all digital classroom technology systems within all instructional spaces, a state-of-the-art Nursing SIM lab, and many technology enhancements within specialty laboratories. The HHB has been recognized at a LEED Platinum building, the first Platinum building on a University campus in the State of Michigan.
- Oakland University is also a partner with the City of Auburn Hills in the collaboration of a University Center which opened in January of 2014.

## **Cultural and Performing Arts**

Oakland's contribution to the arts has moved beyond local boundaries to secure a place of prominence in the region. Historically, OU has had a strong performing arts program with record-high enrollment numbers.

The Department of Music, Theatre and Dance offers more than 100 student and faculty performances throughout the school year. Guests enjoy everything from musicals and intimate recitals to experimental plays and innovative dance performances. OU has earned a reputation for taking artistic risks, developing gifted artists, nurturing arts partnerships and achieving new heights of quality and professionalism.

Meadow Brook Hall is the sixth largest historic house museum in the United States and is renowned for its superb craftsmanship, architectural detailing and grand scale. Built between 1926 and 1929 as the residence of Matilda Dodge Wilson (widow of auto pioneer John Dodge) and her second husband, lumber broker Alfred G. Wilson, the 110-room, 88,000-square-foot, Tudor-revival style mansion is complete with vast collections of original art and furnishings. In 2012, the U.S. Department of the Interior designated the hall a National Historic Landmark, the highest recognition for historic properties in the United States.

For more than 40 years, the Oakland University Art Gallery (OUAG), housed in the Department of Art and Art History, has delivered diverse, museum-quality art to Metro Detroit audiences. From September to May, the OUAG presents up to six different exhibitions – from cutting-edge contemporary art to projects exploring historical and global themes. The gallery also offers lectures, performances, tours, special events and more. More than 16,000 visit OUAG each year to experience art and cultural programs.

OU's outdoor summer amphitheater, Meadow Brook Music Festival, hosts today's top concerts including rock, alternative, adult contemporary, pop, country, and rhythm and blues; a wine and food festival; stand-up comedians; and family entertainment.

## **Community Outreach**

In the more than 10 years since Oakland University initiated a formal partnership with the City of Rochester through the Rochester Downtown Development Authority (DDA), much has been accomplished with new initiatives added over time.

The partnership presents many opportunities for the OU community to benefit from joint educational and cultural programming. Areas of emphasis for students, faculty and alumni have included employment, internships, research and development projects, business development assistance, community service projects, promotions and business discounts, and opportunities to showcase the arts, theatre and music to complement classroom work.

Students are involved in downtown Rochester events, including the annual Rochester Hometown Christmas Parade. Students, alumni, faculty and staff enjoy discounts at dozens of participating stores and restaurants through the OU GO card. The University also partners

with the Rochester Regional Chamber of Commerce for joint programming and assistance. Oakland proudly partners with its other neighboring communities including Auburn Hills, Pontiac and Rochester Hills.

OU and the City of Pontiac have a long history together through programs such as GEAR UP (Gaining Early Awareness and Readiness for Undergraduate Programs), which helps students in the Pontiac as well as Oak Park school districts; Project Upward Bound, which helps 120 students each year finish high school and develop the social and cultural skills needed to realize their dreams and succeed in college and society; and through the Wade H. McCree Jr. Incentive Scholarship program, which assures that students who meet specific criteria will be awarded a full-tuition scholarship to Oakland when they graduate from high school.

Oakland University is involved in various community service efforts in Macomb County, including sponsorship of and participation in Turning Point's annual fund-raising event and Tara Grant Memorial Walk/Run, the annual KnowResolve Suicide Prevention Be Aware Walk, and the Let's Move Festival of the Races in downtown Mount Clemens. In addition, Oakland University students and staff including the OU Dance team, Cheer team and the Grizz, participated in the annual Macomb County Santa Parade last year.

In 2013, members of the Oakland University community opened their hearts and their wallets, making generous gifts to the All-University Fund Drive. A total of 667 faculty, staff and retirees contributed \$363,255. With matching funds included, this amount rose to \$519,850.

### **Academic and Student Life Enhancements**

All students should have the benefit of academic support services, especially mentoring and small learning communities, aimed at helping them make the necessary academic and social adjustments to achieve collegiate success.

OU's First Year Advising Center connects new students with University advisers, peer mentors, graduate assistants, faculty and various support services on campus to provide a more effective student experience, especially during the critical first year.

The Oakland University Trustee Academic Success (OUTAS) scholarship program is a national model for retaining and graduating a diverse group of high-achieving university students. OUTAS was established to counter the declining rates of minority retention, graduation and student performance.

The Writing Center in Kresge Library, established through a leadership gift from OU Professor Emeritus of English Joan Rosen, assists hundreds of students each year. The Writing Center provides assistance to students to develop and incorporate effective writing and communication skills in all subject areas.

Oakland's Honors College offers highly motivated students seeking a rich, valuable and challenging undergraduate education an intimate, intellectually friendly and challenging atmosphere. Small classes average 10 to 20 students and allow for more interaction between the professor and students. The program offers a specially designed core of general education courses in art, literature, western civilization, social science, global perspectives, mathematics, logic, computer science, natural science and technology.

OU has more than 250 student organizations that encourage student involvement and social opportunities.

The Recreation and Athletics Center hosts a number of activities throughout the year in which students may get involved, including intramural and club sports, group exercise classes and wellness-related programs. This multi-purpose facility draws more than 25,000 visits per month for recreational and sports programs, and hosts sellout crowds at men's basketball games.

New outdoor recreation and athletics facilities, scheduled for completion in fall 2014, will accommodate NCAA Division I athletic events including tennis and track and field meets, club and intramural sports competitions, and a variety of fitness and recreational activities welcoming university students, faculty, staff and community visitors.

## **OAKLAND UNIVERSITY UNDERGRADUATE DEGREE PROGRAMS**

### **College of Arts and Sciences (100)**

#### **Bachelor of Arts – CASBA (58)**

2810	Anthropology
2815	Anthropology – Modified w/Concentration in Linguistics
1055	Art History
1105	Biology
1230	Chemistry
1450	Cinema Studies
2705	Communication
2715	Communication – Modified w/Concentration in Linguistics
1420	Creative Writing
2876	Criminal Justice w/Special in Law Enforcement
2877	Criminal Justice w/Special in Courts
2878	Criminal Justice w/Special in Corrections/Treatment
2879	Criminal Justice w/Special in Juvenile Justice
2880	Criminal Justice w/Special in Information Security and Assurance
2881	Criminal Justice w/Special in Homeland Security
2290	Dance
1610	East Asian Studies – China
1615	East Asian Studies – Japan
3700	Economics
1405	English
1410	English – Modified w/Concentration in Linguistics
1980	French Language and Literature
1985	French – Modified
2015	German w/Concentration in German Studies
2010	German Language and Literature
2020	German – Modified
1096	Graphic Design
1505	History
1045	Independent Major
2510	International Relations
2040	Japanese Language and Literature
2045	Japanese – Modified
2735	Journalism
2060	Latin American Language and Civilization
1625	Latin American Studies
1700	Liberal Studies
1705	Linguistics
1710	Linguistics – Modified
1805	Mathematics
2205	Music
2375	Philosophy
2405	Physics
2515	Political Science
2605	Psychology
2615	Psychology – Modified w/Concentration in Linguistics
2820	Sociology
2805	Sociology/Anthropology
2825	Sociology – Modified w/Concentration in Linguistics
2100	Spanish Language and Literature

- 2110 Spanish – Modified
- 1075 Studio Art – Specialization in Drawing
- 1090 Studio Art - Specialization in New Media
- 1080 Studio Art – Specialization in Painting
- 1085 Studio Art – Specialization in Photography
- 2294 Theatre
- 2130 Two Modern Languages
- 2870 Writing and Rhetoric
- 2865 Women and Gender Studies

**Bachelor of Fine Arts – BFA (4)**

- 2283 Acting
- 2290 Dance
- 2285 Musical Theatre
- 2296 Theatre Design & Technology

**Bachelor of Music – BM (7)**

- 2360 Choral/General Music Education
- 2363 Choral/General Music Education/Performance
- 2362 Instrumental/General Music Education
- 2364 Instrumental/General Musical Education Performance
- 2265 Music – Instrumental Performance
- 2245 Music – Piano Performance
- 2240 Music – Voice Performance

**Bachelor of Science – CASBS (13)**

- 1905 Actuarial Science
- 1835 Applied Statistics
- 1225 Biochemistry
- 1105 Biology
- 1125 Biology – Modified w/Specialization in Anatomy
- 1120 Biology – Modified w/Specialization in Cell-Molecular Biology
- 1130 Biology – Modified w/Specialization in Microbiology
- 1109 Biomedical Sciences
- 1230 Chemistry
- 1805 Mathematics
- 2420 Medical Physics
- 2405 Physics
- 2530 Public Administration and Public Policy

**Bachelor of Science – ENVSCI (2)**

- 1252 Environmental Science/Specialization Sustainability and Res. Mgt.
- 1257 Environmental Science/Specialization in Environmental Health

**Bachelor of Social Work – BSW (1)**

- 2860 Social Work

**K-12 Educational Programs (9)**

- 1992 French w/K-12 Certification
- 2027 German w/K-12 Certification
- 2047 Japanese w/K-12 Certification
- 2122 Spanish w/K-12 Certification
- 1076 Studio Art – w/K-12 Specialization in Drawing
- 1091 Studio Art – w/K-12 Specialization in New Media
- 1081 Studio Art – w/K-12 Specialization in Painting
- 1086 Studio Art – w/K-12 Specialization in Photography

1093 Studio Art – w/K-12 Specialization in Graphic Design

**Secondary Education Programs (6)**

1140 Biology w/Secondary Ed  
1240 Chemistry w/Secondary Ed  
1430 English w/Secondary Ed  
1515 History w/Secondary Ed  
1825 Mathematics w/Secondary Ed  
2430 Physics w/Secondary Ed

**School of Business Administration (9)**

**Bachelor of Science – SBABS (9)**

3100 Accounting  
3705 Business Economics  
3700 Economics  
3200 Finance  
3300 General Management  
3400 Human Resource Management  
3500 Management Information Systems  
3600 Marketing  
3806 Operations Management

**School of Education and Human Services (2)**

**Bachelor of Science (2)**

4120 Elementary Education  
4320 Human Resource Development

**School of Engineering and Computer Science (6)**

**Bachelor of Science (2)**

5020 Computer Science  
5070 Information Technology

**Bachelor of Science in Engineering (4)**

5120 Computer Engineering  
5140 Electrical Engineering  
5185 Industrial & Systems Engineering  
5160 Mechanical Engineering

**School of Health Sciences (11)**

**Bachelor of Science (11)**

6070 Applied Health Sciences  
6161 Biomedical Diagnostic and Therapeutic Sciences  
6020 Health Sciences  
6167 BDTS: Medical Laboratory Science  
6162 BDTS: Cytotechnology  
6163 BDTS: Histotechnology  
6165 BDTS: Nuclear Medical Technology  
6166 BDTS: Radiation Therapy  
6168 BDTS: Radiologic Technology  
6041 Occupational Safety and Health  
6050 Wellness, Health Promotion, and Injury Prevention

**School of Nursing (2)**

**Bachelor of Science in Nursing (2)**

7020 Nursing  
7040 Nursing (Completion Sequence)



**University Programs (1)****Bachelor of Integrative Studies (1)**

7605 Integrative Studies

**Bachelor of Science Offered Jointly between the College of Arts and Sciences  
and School of Engineering and Computer Science (3)**

5051 Bioengineering

5040 Engineering Chemistry

5060 Engineering Physics

**UNDERGRADUATE CONCENTRATIONS AND MINORS****UNDERGRADUATE CONCENTRATIONS (23)**

2885 Addiction Studies Concentration  
1435 American Studies  
2850 Archaeology  
1270 Environmental Studies  
6240 Exercise Science  
1995 French Studies  
2887 Gerontology Concentration  
6030 Health Behavioral Sciences  
6073 Health Information Technology  
6023 Integrative Holistic Medicine  
1705 Linguistics  
6071 Medical Assistant  
6055 Nutrition and Health  
6075 Occupational Therapy Assistant  
6076 Physical Therapist Assistant  
6021 Pre-Health Professional  
6022 Pre-Pharmacy  
6015 Pre-Physical Therapy  
1152 Pre-Medical Studies – Med/Den/Opt/Vet  
2856 Religious Studies  
6072 Respiratory Therapy  
6074 Surgical Technology  
2855 Urban Studies

**UNDERGRADUATE MINORS (101)**

3100 Accounting  
2740 Advertising  
1605 African-American Studies  
2810 Anthropology  
1810 Applied Mathematics  
4355 Applied Leadership Skills  
1835 Applied Statistics  
3810 Applied Technology in Business  
1055 Art History

1105	Biology
1140	Biology – Secondary Teaching
2746	Broadcasting
3840	Business
1230	Chemistry
1240	Chemistry – Secondary Teaching
2889	Child Welfare
1610	East Asian Studies – China
1615	East Asian Studies – Japan
1956	Chinese Language
1955	Chinese Language and Civilization
2841	Christianity Studies
1450	Cinema Studies
2705	Communication
5020	Computer Science
5021	Computing
2875	Criminal Justice
1420	Creative Writing
2290	Dance
2292	Dance – Secondary Teaching
3700	Economics
3702	Economics – Secondary Teaching
4351	Employment Systems and Standards
1405	English
1430	English – Secondary Teaching
3850	Entrepreneurship
1266	Environmental Science
6240	Exercise Science
3200	Finance
1981	French Language
1980	French Language and Literature
1990	French – Secondary Teaching
3315	General Business
2011	German Language
2010	German Language and Literature
2016	German Studies
2025	German – Secondary Teaching
1095	Graphic Design
1505	History
1515	History – Secondary Teaching
4320	Human Resource Development
3400	Human Resources Management
3302	International Management
5300	International Orientation
2510	International Relations
5070	Information Technology
2842	Islamic Studies
2037	Japanese Language
2035	Japanese Language and Civilization
2040	Japanese Language and Literature
2047	Japanese – Secondary Teaching
2350	Jazz Studies
2735	Journalism
2843	Judaic Studies
1625	Latin American Studies
1705	Linguistics

3500	Management Information Systems
3600	Marketing
1805	Mathematics
1825	Mathematics – Secondary Teaching
1635	Middle Eastern Studies
2748	Multimedia
2205	Music
6055	Nutrition and Health
6041	Occupational Safety and Health
3806	Operations Management
2375	Philosophy
2405	Physics
2430	Physics – Secondary Teaching
2515	Political Science
2520	Political Science – Secondary Teaching
2605	Psychology
2742	Public Relations
2530	Public Administration and Public Policy
3800	Quantitative Methods
1631	Russian and East European Studies
2820	Sociology
2822	Sociology – Secondary Teaching
1620	South Asian Studies
2101	Spanish Language
2100	Spanish Language and Literature
2120	Spanish – Secondary Teaching
1070	Studio Art
1720	Teaching English as a Second Language
2294	Theatre
1147	Three Science
4900	Training and Development
1146	Two Science
6050	Wellness, Health Promotion, and Injury Prevention
2865	Women and Gender Studies
2870	Writing and Rhetoric
2355	World Music

## **GRADUATE DEGREE PROGRAMS**

### **Doctor of Philosophy (14)**

PH1900	Applied Mathematical Sciences
PH1115	Biomedical Sciences: Biological Communication
PH1350	Biomedical Sciences: Health and Environmental Chemistry
PH2490	Biomedical Sciences: Medical Physics
PH5030	Computer Science and Informatics
PH4951	Education: Educational Leadership
PH4950	Education: Counseling
PH4952	Education: Early Childhood Education
PH5160	Mechanical Engineering
PH2305	Music Education
PH4940	Reading Education
PH5180	Systems Engineering
PH5540	Electrical and Computer Engineering
PH2605	Psychology

### **Doctor of Physical Therapy (2)**

DP6220
DP6221

### **Doctor of Science in Physical Therapy (1)**

DS6220
--------

### **Doctor of Nursing Practice (1)**

DN7400
--------

### **Doctor of Medicine (1)**

MD9100
--------

### **Education Specialist (2)**

ED4705	Early Education and Intervention
ES4650	Leadership

### **Master of Arts (7)**

MA1105	Biology
MA2710	Communications
MA4400	Counseling
MA1405	English
MA1505	History
MA1705	Linguistics
MA1805	Mathematics

### **Master of Arts in Liberal Studies (1)**

MA1700
--------

### **Master of Accounting (1)**

MA3100
--------

**Master of Arts in Teaching (3)**

MT4120	Elementary Education
MT4500	Reading and Language Arts
MT4220	Secondary Education

**Master of Business Administration (2)**

MB3900
MB3901

**Master of Education (6)**

ME4668	Higher Education Leadership
ME4700	Early Childhood Education
ME4610	Educational Leadership
ME4620	Educational Studies
ME4800	Special Education
ME4615	Teacher Leadership

**Master of Music (7)**

MM2335	Conducting
MM2345	Instrumental Performance
MM2305	Music Education
MM2320	Piano Pedagogy
MM2325	Piano Performance
MM2310	Vocal Pedagogy
MM2315	Vocal Performance

**Master of Public Administration (1)**

MP2560
--------

**Master of Science (19)**

MS1835	Applied Statistics
MS1105	Biology
MS1230	Chemistry
MS5020	Computer Science
MS5540	Electrical and Computer Engineering
MS5620	Embedded Systems
MS5560	Engineering Management
MS6240	Exercise Science
MS5185	Industrial and Systems Engineering
MS1860	Industrial Applied Mathematics
MS3550	Information Technology Management
MS5160	Mechanical Engineering
MS5545	Mechatronics
MS2605	Psychology
MS2405	Physics
MS6045	Safety Management
MS5600	Software Engineering and Information Technology
MS5180	Systems Engineering

**Master of Science in Nursing (5)**

MS7270	Adult Gerontological Nurse Practitioner
MS7263	Clinical Nurse Specialist – Adult Health
MS7280	Family Nurse Practitioner
MS7220	Nurse Anesthesia
MS7290	RN to MSN

**Master of Training and Development (1)**

MD4900

**Master of Public Health(1)**

MH6300

**Graduate Certificate (29)**

GC4551	Advanced Microcomputer Applications
GC4817	Applied Behavior Analysis Basic
GC4816	Applied Behavior Analysis Comprehensive
GC4818	Autism for Multiple Disciplines
GC4820	Autism Spectrum Disorder
GC4819	Autism Spectrum Disorder Advanced
GC1107	Biomedical Sciences
GC6245	Clinical Exercise Science
GC6248	Complementary Medicine and Wellness
GC2335	Conducting
GC6246	Corporate and Worksite Wellness
GC6240	Exercise Science
GC2345	Instrumental Performance
GC4625	International Education
GC4550	Microcomputer Applications
GC2305	Music Education
GC6233	Neurological Rehabilitation
GC6228	Oncology Rehabilitation
GC6230	Orthopedic Manual Physical Therapy
GC6232	Orthopedics
GC6231	Pediatric Rehabilitation
GC2320	Piano Pedagogy
GC2325	Piano Performance
GC5186	Productivity Improvement
GC1880	Statistical Methods
GC6234	Teaching and Learning for Rehabilitation Professionals
GC1720	Teaching English as Second language
GC2310	Vocal Pedagogy
GC2315	Vocal Performance

**Post Masters  
Graduate  
Certificate (29)**

PM3101	Accounting
PM7271	Adult Gerontological Nurse Practitioner
PM4561	Advanced Reading, Language Arts and Literature
PM3706	Business Economics
PM4661	Central Office Administration
PM2335	Conducting
PM2564	Court Administration
PM2569	Criminal Justice Leadership
PM3851	Entrepreneurship
PM7281	Family Nurse Practitioner
PM3201	Finance
PM3301	General Management
PM2566	Health Care Administration
PM4670	Higher Education
PM3401	Human Resources Management
PM2346	Instrumental Performance
PM3306	International Business
PM2568	Local Government Management
PM3501	Management Information Systems
PM3601	Marketing
PM2305	Music Education
PM2567	Nonprofit Organization & Management
PM7221	Nurse Anesthesia
PM2320	Piano Pedagogy
PM2326	Piano Performance
PM3807	Production/Operations Management
PM4560	Reading, Language Arts and Literature
PM2311	Vocal Pedagogy
PM2315	Vocal Performance

### III. Staffing and Enrollment

The following tables and graphs are provided:

Figure 1 - Faculty and Staff Full Time Equivalent (FTE) by Program, FY 2012-13

This chart shows the FTE for faculty, administration and clerical/service for both instructional disciplines and non-instructional program classes.

		<b>FACULTY</b>	<b>STAFF</b>
5	AREA STUDIES	12.62	0.89
9	COMMUNICATION	38.90	0.96
11	COMPUTERS	20.70	5.35
13	EDUCATION	112.66	26.34
14	ENGINEERING	42.14	14.26
16	FOREIGN LANGUAGES	50.38	2.95
23	ENGLISH & LETTERS	86.39	6.32
24	LIBERAL ARTS	4.29	3.63
25	LIBRARY	1.00	0.00
26	BIOLOGY	40.89	14.72
27	MATH	38.35	5.19
30	MULTI/INTERDISCIPLINARY	1.60	0.00
31	PARKS RECREATION & FITNESS	9.66	0.00
38	PHILOSOPHY	19.98	1.83
40	PHYSICAL SCIENCES	31.94	17.84
42	PSYCHOLOGY	28.77	3.97
44	PUBLIC ADMINISTRATION	9.54	0.00
45	SOCIAL SCIENCES	50.35	9.46
50	VISUAL & PERFORMING ARTS	74.15	22.58
51	HEALTH PROFESSIONS	4.64	0.00
51.12	MEDICINE	28.61	17.44
51.22	PUBLIC HEALTH	6.70	0.00
51.22	REG NURSING	41.86	3.66
51.99	OTHER HEALTH PROFESSIONALS	25.25	8.66
52	BUSINESS	84.74	13.62
54	HISTORY	18.35	2.23
73	HOMELAND SECURITY	0.64	0.00
	<b>TOTAL INSTRUCTION</b>	<b>885.10</b>	<b>181.90</b>
	RESEARCH		15.60
	PUBLIC SUPPORT		1.68
	ACADEMIC SUPPORT		359.18
	STUDENT SERVICES		191.17
	INSTITUTIONAL SUPPORT		204.04
	PLANT OPERATION & MAINT		125.53
	AUXILIARY ENTERPRISES		37.44
	<b>TOTAL FTEs</b>	<b>885.10</b>	<b>1116.54</b>



Figure 2 - Student Credit Hours by Level and by Program, FY 2013-14  
This chart shows credit hours awarded by instructional discipline.

CIP		Lower	Upper	Masters	Doctoral	Total
05	Area Studies	5116	1108			6224
09	Communication	8360	10732	570		19662
11	Computer Science	6326	2512	1112	189	10139
13	Education	11307	14270	16383	3414	35374
14	Engineering	6198	5877	4197	687	16959
16	Modern Languages	18254	3980	628		22862
23	English	33161	10349	288		43798
24	Liberal Arts	2608	118	124		2850
25	Library Science	300				300
26	Biology	21362	13020	923	107	35412
27	Math	26300	1212	1270	94	28876
30	Multi/Interdisciplin. Sciences		1498			1498
31	Parks, Recreation & Fitness	3072	2623	884		6579
38	Philosophy	11468	1722			13190
40	Physical Sciences	31114	1355	407	246	33122
42	Psychology	14900	6324	448		21672
43	Criminal Justice	1688	2700			4388
44	Public Administration	516	4350	1514		6380
45	Social Science	21730	11273	306		33309
50	Fine Arts	21633	8133	439	45	30250
51.10	Med Library Sciences	674	3114			3788
51.22	Public Health	494	2403	388		3285
51.23	Rehab & Therapeutic		432	2940	1381	4753
51.38	Nursing	7028	17078	3451	233	27790
51.99	Other Health Professions	4444	10002	88		14534
52	Business	11987	31103	7409		50499
54	History	7616	3348	128		11092

Figure 3 - Degrees Awarded by Program, FY 2012-13  
This chart shows the degrees awarded by program.

CIP		Bachelor's	Post Bachelor's	Master's	Post Master's	Doctoral	Total
03	Environmental Sciences	8	0	0	0	0	8
05	Area Studies	8	0	0	0	0	8
09	Communication	215	0	3	0	0	218
11	Computer Science	56	0	23	0	2	81
13	Education	201	3	378	82	18	682
14	Engineering	123	0	68	0	8	199
15	Engineering Management	0	0	9	0	0	9
16	Modern Languages	49	0	8	0	0	57
23	English	103	0	13	0	0	116
24	Liberal Arts	105	0	4	0	0	109
26	Biology	166	4	9	0	6	185
27	Math	21	1	2	0	1	25
31	Parks, Recreation & Fitness	0	0	18	0	0	18
38	Philosophy	16	0	0	0	0	16
40	Physical Sciences	23	0	16	0	3	42
42	Psychology	201	0	0	0	0	201
44	Public Administration	52	0	20	0	0	72
45	Social Science	163	0	0	0	0	163
50	Fine Arts	105	0	4	0	0	109
51.16	Nursing	421	0	65	2	5	493
51.22	Public Health	28	0	2	0	0	30
51.99	Other Health Professions	259	14	0	0	63	336
52	Business	438	0	178	7	0	623
54	History	66	0	2	0	0	68
<b>Total</b>	<b>Total</b>	<b>2,827</b>	<b>22</b>	<b>822</b>	<b>91</b>	<b>106</b>	<b>3,868</b>

Figure 4 - Enrollment Trends from Fall 1998 to Fall 2014

This graphic shows the growth over the last twelve years in undergraduate and graduate resident students and undergraduate and graduate non-resident students. During this period Oakland University's enrollment increased from 14,289 to 20,519, an increase of nearly 44%.

Fall Term	Undergraduate			Graduate			Total		
	In-State	Out of State	Total	In-State	Out of State	Total	In-State	Out of State	Total
1998	10,963	148	11,111	3,061	117	3,178	14,024	265	14,289
1999	11,473	181	11,654	2,989	83	3,072	14,462	264	14,726
2000	11,797	205	12,002	3,132	101	3,233	14,929	306	15,235
2001	12,311	218	12,529	3,236	110	3,346	15,547	328	15,875
2002	12,418	216	12,634	3,310	115	3,425	15,728	331	16,059
2003	12,731	228	12,959	3,515	102	3,617	16,246	330	16,576
2004	12,894	221	13,115	3,580	207	3,787	16,474	428	16,902
2005	13,233	215	13,448	3,787	104	3,891	17,020	319	17,339
2006	13,484	217	13,701	3,936	100	4,036	17,420	317	17,737
2007	13,907	183	14,090	3,879	113	3,992	17,786	296	18,082
2008	14,233	164	14,397	3,646	126	3,772	17,879	290	18,169
2009	15,091	184	15,275	3,526	319	3,645	18,617	303	18,920
2010	15,331	199	15,530	3,400	123	3,523	18,731	322	19,053
2011	15,637	201	15,838	3,411	130	3,541	19,048	331	19,379
2012	15,954	236	16,190	3,385	165	3,550	19,339	401	19,740
2013	16,283	311	16,594	3,316	259	3,575	19,599	570	20,169
<b>2014</b>	<b>16,508</b>	<b>427</b>	<b>16,935</b>	<b>3,232</b>	<b>352</b>	<b>3,584</b>	<b>19,740</b>	<b>779</b>	<b>20,519</b>

Figure 5 – Enrollment Projections by School/College and Level, Fall 2015 – Fall 2019  
Oakland University continues to experience increases in enrollments.

Enrollment Projections by School/College and Level Fall 2015 - Fall 2019							
	Actual	Projections					% Change
Undergraduate	2014	2015	2016	2017	2018	2019	2014 - 2019
CAS	6,479	6,577	6.1%	6,752	6,818	6,873	6.1%
SBA	2,432	2,491	7.8%	2,575	2,600	2,621	7.8%
SEHS	1,145	1,136	4.2%	1,172	1,183	1,193	4.2%
SECS	1,795	1,889	10.6%	1,950	1,969	1,985	10.6%
SHS	2,220	2,307	8.8%	2,373	2,396	2,416	8.8%
SON	1,648	1,678	6.1%	1,718	1,735	1,749	6.1%
UP/None	1,216	1,219	4.8%	1,252	1,264	1,274	4.8%
Total	16,935	17,297	6.9%	17,791	17,965	18,110	6.9%
Graduate	2014	2015	2016	2017	2018	2019	
CAS	432	432	3.6%	442	443	447	3.6%
SBA	486	491	5.8%	504	506	514	5.8%
SEHS	1,281	1,253	1.6%	1,268	1,276	1,301	1.6%
SECS	578	584	6.9%	600	610	618	6.9%
SHS	263	265	5.4%	271	273	277	5.4%
SON	227	220	4.2%	228	231	237	4.2%
Medical School	317	395	56%	470	495	495	56%
Total	3,584	3,639	8.5%	3,782	3,833	3,890	8.5%
Total	2014	2015	2016	2017	2018	2019	
CAS	6,911	7,009	5.9%	7,193	7,261	7,320	5.9%
SBA	2,918	2,982	7.4%	3,078	3,106	3,135	7.4%
SEHS	2,426	2,389	2.8%	2,440	2,460	2,494	2.8%
SECS	2,373	2,472	9.7%	2,551	2,580	2,603	9.7%
SHS	2,483	2,572	8.5%	2,644	2,669	2,693	8.5%
SON	1,875	1,898	5.9%	1,945	1,965	1,985	5.9%
Medical School	317	395	56%	470	495	495	56%
University Programs	1,216	1,219	4.8%	1,252	1,264	1,274	4.8%
Total	20,519	20,936	7.2%	21,573	21,798	22,000	7.2%
		2.0%	1.7%	1.3%	1.0%	0.9%	

Figure 6 – General Fund Square Feet per Student in Michigan, FY 2012-2013

This chart shows that Oakland University is last in general fund square footage per the 15 Michigan institutions. Source: Heidi Data Base

Rank by SQ FT	
UNIV	SQFT/FYES
LSSU	364.89
UMA	361.24
MTU	335.71
MSU	309.00
WSU	295.58
WMU	265.75
NMU	235.12
UM-D	207.71
UM-F	207.38
EMU	178.13
CMU	176.96
SVSU	167.83
FSU	145.66
GVSU	126.57
<b>OU</b>	<b>107.10</b>

## **Future Staffing Needs**

Oakland University currently employs 4,359 full and part-time faculty and staff and 3,608 student employees. In addition, there are over 100 employees of contract service providers for food service, bookstore, and custodial services. Faculty and staff will grow with increased enrollment.

## **Average Class Size**

Average class size for undergraduate instruction in fall 2013 was 32.31 students. Graduate class size in fall 2013 was 15.46 and PhD classes averaged 16.48 students. It is important to the institutional character that the size of classes remains small. However, larger classes have been a cost-effective way to absorb growth.

## **IV. Facility Assessment**

### **Utilization Rates**

Oakland University has the lowest building square footage per student (figure 6) of any of the 15 public universities. A comparison of its enrollment, programmatic mix, doctoral programs and the relatively large number of engineering and science programs suggests that the University's space should be closer to the overall average space of the 15 publics. Program by program comparisons to national norms for disciplines indicates that all programs fall short in space.

Classroom utilization is high, especially in the evenings. Oakland's enrollment includes a large number of non-traditional students. Demand for evening classes exceeds available facilities. A large number of evening classes are offered at area high schools.

### **Mandated Standards**

Mandated standards for animal research are met.

### **Functionality**

The limited amount of specialized program space affects overall space functionality. This is particularly evident in the most impacted areas of Nursing, Health Sciences, and the Performing Arts. Recent facility additions for the sciences, nursing, business and education provide good space for programmatic needs. Most academic programs on the Oakland University campus are offered in the following buildings:

- North Foundation Hall – Completed in 1959, and is primarily a student services building, but also includes two classrooms. The building is receiving a general facelift and significant improvements to the air distribution system.
- South Foundation Hall - Completed in 1959, this building is primarily a classroom building. The University has been adding technology to the classrooms over the past several years. This building is used by nearly all academic disciplines.

- Hannah Hall of Science - Completed in 1961, houses science, health science, and engineering laboratories as well as classrooms and offices. Air conditioning was added as part of a major energy project undertaken several years ago. Portions of the building were renovated to accommodate health sciences as part of the State funded Science and Engineering Building.
- Kresge Library – Completed in 1961 with additions in 1989. This is the central library for the institution.
- Wilson Hall - Completed in 1967, houses the departments of Art and Art History, and Communications and Journalism. It also houses Meadow Brook Theatre and administrative offices.
- Dodge Hall of Engineering - Completed in 1969, houses engineering and biology laboratories, offices, and classrooms. It also provides space for the Eye Research Institute and the administrative/academic computing center. The School of Engineering and Computer Science has a significant space deficit compared to national standards. This deficit will be significantly reduced by the construction of the new Engineering Center.
- Varner Hall - Completed in 1970, houses the departments of Music, Theatre and Dance (MTD), History, Political Science, and Sociology/Anthropology. The facilities for MTD are inadequate to meet the needs of their growing programs.
- O'Dowd Hall - Completed in 1982, this building houses the School of Nursing, the Graduate Office, the Registrar, the Departments of English, Writing and Rhetoric, Modern Languages and Literatures, Linguistics, Philosophy, and a number of general purpose classrooms. O'Dowd Hall is the home of the School of Medicine. The building continues to suffer from leaks along the curtain wall that have been a problem for a number of years. The curtain wall is being replaced in 2012-13.
- Elliott Hall - Completed in 2000, houses the School of Business Administration and Information Technology.
- Pawley Hall - Completed in 2002, houses the School of Education and Human Services, as well as the Lowry Child Development Center.
- Human Health Building – Completed in Fall, 2012, this 172,825 square foot building houses the School of Health Sciences and the School of Nursing. Collectively, this new enterprise is part of Oakland University's vision of better preparing today's health care students by creating an innovative partnership in one structure. With this new building, growth in undergraduate and graduate enrollment can be significantly increased in response to vital shortages in nursing and heavy demand for health science professionals.
- Engineering Center (EC) - Completed in Fall, 2014, this building is designed to provide high quality twenty first century instructional and research facilities for all engineering and computer science programs that are vital to the revival of the economy of Southeast Michigan as well as the State of Michigan in general. This

includes supporting the global competitiveness of the US alternative energy, health care and bio-medical, automotive, defense, and other high-tech industries. The EC added 128,000 square feet for the School of Engineering and Computer Science (SECS), as well as 13,500 square feet of assignable general purpose classroom space to support the growth of the overall student population.

Although academic programs are offered in other facilities and there are a number of other service buildings and auxiliary buildings, the above are the major academic facilities. The average age of buildings on the main campus is 30 years old. In general, buildings are in fair condition. Oakland University maintains a comprehensive list of plant renewal and deferred plant renewal projects, which is updated annually.

### **Replacement Value of Facilities**

The replacement value of Oakland University's 3.78 million square feet, including Meadow Brook Hall is estimated at \$1.1 billion.

### **Utility Systems Condition**

The utility systems in facilities (i.e., heating, ventilation, air conditioning (HVAC), water, sewage, gas and electrical) are in varying degrees of condition, depending on facility age. All are fully functional, with those in the 30 to 40 year age and beyond group needing upgrades to increase efficiency and effectiveness of operation. The storm water system for some of the facilities flooded due to unusual 100-year storms and need attention in coming years. The existing water/sewage infrastructure is adequate to serve the projected programming needs for the next 10 years. An upgrade to the electrical substation was completed in 2003, which included cabling, switchgear, and a new substation. This upgrade will meet projected electrical needs for at least 15 years however capacity of the cabling needs to be evaluated as the campus grows in the future. Additional upgrades to infrastructure throughout campus will be required as campus facilities age and enrollment grows.

Many of the older facilities lack fire suppression systems and would be in consideration to update the facilities per current Codes during major renovation projects.

Due to the age of OU's infrastructure replacement/upgrade is needed for the underground HTHW lines. A new HTHW line needs to be installed to complete the south loop from the new Engineering Center to Varner Hall, IT closets, IT cabling with Voice over IP capabilities, Boiler #4 in the Central Heat Plant, and the infrastructure (HVAC, plumbing and electrical) in the academic buildings (Dodge Hall of Engineering, South Foundation Hall, Hannah Hall of Science, Varner Hall) as well as residence halls (Hamlin Hall and Vandenberg Hall).



## **Facility Infrastructure Condition**

The pavement/sidewalks/structural infrastructure is generally in fair condition. Funds are allocated annually to pavement/sidewalk repair to restore the most deteriorated portions.

Major campus projects included in the next 5-year plan are installation of a Co-generation system, replacement of old air-handling units, HTHW system upgrade, storm water management, and an upgraded VOIP communication network. A service contract has been in place to maintain new micro-turbines in the new Engineering Center. Oakland budgets \$3.8 million for non-routine maintenance in its current fiscal year from the general fund, endowment distribution, and auxiliary operation reserves.

## **Land**

Oakland University's campus includes 1,443 acres. The main campus is approximately 350 acres. The remaining campus includes several major developments (a faculty/staff subdivision, the National Register Meadow Brook Estate, two golf courses), a large amount of wetland, and significant undeveloped acreage. The Campus Master Plan, approved by the Board of Trustees in April 2001, has identified future uses for all of the undeveloped property.

## **Buildings Obligated to the State Building Authority**

The following buildings/portions of buildings are bonded through State bonds:

Science and Engineering Building – lease expiration in 2034

Elliott Hall – lease expiration in 2040

Pawley Hall – lease expiration in 2042

Engineering Center – lease expiration in 2042

Human Health Building – lease expiration in 2047

Double check dates of above.....

The following facilities are bonded through the University:

Golf course - final payment in 2026

Recreation and Athletic Center - final payment in 2026

Student Apartments – final payment in 2031

Electrical Power Upgrade – final payment in 2031

Parking Structure – final payment in 2031

Oakland Center Expansion – final payment in 2031

Human Health Building – final payment in 2039

Engineering Center – final payment in 2042

Oak View Hall – final payment in 2043

Extension of Library Drive – final payment in 2043

Facilities Management Building – final payment in 2043

# Oakland University Classroom Utilization Reports

## Fall 2013 and Winter 2014

106 Classrooms

Definitions

*ASF = Assignable Square Feet*

*Capacity= Number of seats or stations in room*

*WRH = Number of Hours per Week Room was scheduled*

*WRH% = WRH / Available Hour per Week*

*Station Occupancy = % of seats used when room was in use.*

### Report 1 – Fall 2013

- All Day Utilization 8 am to 10 pm
- 75 Available Hours per Week

Building	Room	ASF	Capacity	WRH	WRH%	Station Occupancy
DHE	200	812	95	56.0	74.7%	67.9%
DHE	201	3,596	314	36.5	48.7%	55.4%
DHE	202	648	52	33.3	44.5%	43.7%
DHE	203	918	70	36.1	48.1%	75.0%
DHE	204	638	30	31.7	42.3%	54.5%
DHE	236	380	30	40.0	53.3%	58.7%
DHE	237	380	30	38.9	51.9%	58.3%
EH	204	570	30	37.9	50.5%	68.2%
EH	206	570	30	46.6	62.2%	63.5%
EH	208	720	40	45.4	60.6%	71.5%
EH	210	720	45	40.0	53.4%	71.2%
EH	212	720	40	53.8	71.8%	57.8%
EH	214	837	48	46.6	62.1%	75.5%
EH	235	1,054	40	37.2	49.6%	62.1%
EH	237	1,054	40	50.8	67.7%	54.2%
EH	239	1,054	40	47.6	63.5%	59.9%
HHB	1005	1,828	80	44.1	58.8%	50.7%
HHB	1006	1,563	50	41.3	55.1%	36.8%
HHB	1031	729	30	41.8	55.8%	44.6%
HHB	1050	4,384	200	40.2	53.6%	69.3%
HHB	2023	1,442	50	42.3	56.4%	42.2%
HHB	2085	1,213	55	48.6	64.9%	40.7%
HHB	2086	1,307	60	41.7	55.5%	47.3%
HHB	4043	1,938	80	34.0	45.4%	49.1%
HHB	4050	2,695	112	32.0	42.7%	61.5%
HHB	5036	1,208	50	41.2	54.9%	57.7%
HHB	5037	1,967	80	51.9	69.2%	59.6%
HHB	5045	2,730	112	49.0	65.3%	65.6%
HHS	190	2,024	187	44.0	58.7%	57.2%
HHS	195	2,254	187	44.2	58.9%	69.6%
HHS	220	550	40	41.8	55.7%	65.3%
HHS	225	414	30	33.3	44.5%	67.9%
NFH	156	1,980	144	49.4	65.8%	72.5%
ODH	202A	1,344	83	36.0	48.0%	72.2%
ODH	202B	1,848	111	37.7	50.2%	68.8%
ODH	202C	1,394	83	39.0	52.0%	53.6%
PH	302	1,711	72	44.6	59.5%	65.9%
PH	306	957	48	46.4	61.9%	61.5%
PH	307	925	49	42.7	56.9%	54.3%
PH	308	928	48	42.6	56.9%	59.7%
PH	309	925	49	43.5	58.1%	60.9%

Building	Room	ASF	Capacity	WRH	WRH%	Station Occupancy
PH	310	754	36	48.0	64.0%	58.1%
PH	312	725	36	49.3	65.8%	40.7%
PH	314	1,248	48	41.7	55.6%	50.9%
PH	316	957	48	50.2	66.9%	52.8%
PH	318	928	48	42.2	56.3%	49.8%
PH	320	754	36	52.8	70.5%	55.3%
SEB	93	570	35	37.4	49.8%	64.2%
SEB	130	630	42	52.0	69.3%	57.1%
SEB	164	1,134	70	56.0	74.7%	65.6%
SEB	168	1,107	70	52.0	69.3%	68.4%
SEB	172	1,134	70	52.0	69.3%	60.3%
SEB	185	840	50	54.0	72.0%	56.7%
SEB	187	540	36	48.0	64.0%	76.4%
SEB	364	400	26	40.4	53.9%	60.4%
SEB	372	960	50	14.3	19.1%	32.2%
SEB	376	600	28	46.7	62.2%	43.8%
SEB	378	600	30	48.0	64.0%	38.6%
SEB	384	660	44	43.2	57.5%	58.2%
SEB	386	600	40	52.0	69.3%	58.1%
SEB	388	600	30	52.9	70.6%	49.2%
SFH	163	816	63	33.7	44.9%	74.2%
SFH	164	644	48	56.3	75.0%	45.5%
SFH	165	945	63	27.1	36.1%	74.1%
SFH	166	644	48	45.7	60.9%	48.5%
SFH	167	644	48	45.7	60.9%	45.4%
SFH	168	644	48	48.8	65.0%	49.1%
SFH	169	644	40	50.8	67.7%	49.3%
SFH	170	644	48	40.9	54.5%	61.2%
SFH	171	644	30	42.7	56.9%	59.8%
SFH	172	644	48	51.0	68.1%	44.0%
SFH	173	644	48	51.0	68.1%	48.0%
SFH	174	644	48	50.1	66.9%	51.9%
SFH	176	702	48	44.4	59.2%	49.1%
SFH	263	980	65	42.7	56.9%	79.9%
SFH	265	420	25	37.8	50.4%	40.2%
SFH	266	644	48	53.9	71.8%	55.1%
SFH	268	644	48	51.5	68.7%	47.3%
SFH	269	644	48	42.2	56.3%	51.6%
SFH	270	644	48	52.6	70.2%	44.6%
SFH	271	644	48	42.9	57.2%	53.6%
SFH	272	644	48	46.7	62.2%	50.8%
SFH	273	644	48	46.2	61.6%	49.5%
SFH	274	644	48	49.5	66.1%	47.4%
SFH	276	728	48	48.4	64.5%	49.0%
SFH	363	980	70	46.1	61.5%	68.8%
SFH	364	644	48	44.6	59.5%	65.8%
SFH	365	980	75	48.0	64.0%	77.3%
SFH	366	644	48	42.0	56.0%	51.4%
SFH	367	644	48	38.9	51.8%	50.8%
SFH	368	644	48	48.4	64.5%	54.0%
SFH	369	644	48	46.6	62.1%	45.4%
SFH	370	644	48	39.4	52.6%	39.9%
SFH	371	644	48	41.3	55.1%	49.8%
SFH	372	644	48	42.5	56.7%	54.1%
SFH	373	644	48	34.2	45.5%	36.7%
SFH	374	644	48	36.7	48.9%	60.9%
SFH	376	728	48	44.5	59.3%	36.8%
VAR	205	1,064	85	55.9	74.6%	67.6%
VAR	206	1,102	85	50.2	66.9%	68.5%
VAR	479	966	30	42.7	56.9%	72.6%
WH	102	810	60	39.5	52.7%	69.0%
WH	105	783	60	42.7	56.9%	57.2%

Building	Room	ASF	Capacity	WRH	WRH%	Station Occupancy
WH	124	529	85	40.0	53.3%	66.6%
WH	301	300	16	33.8	45.0%	56.1%
WH	313	480	30	42.9	57.2%	57.5%
Totals	106	102,015	6,211	4,668.5		
Averages		962	59	44.0	58.7%	58.3%

## Report 2 - Fall 2013

- Daytime Utilization 8 am to 5 pm
- 45 Available Hours per Week

Building	Room	ASF	Capacity	WRH	WRH%	Station Occupancy
DHE	200	812	95	38.0	84.4%	73.5%
DHE	201	3,596	314	31.5	70.0%	60.0%
DHE	202	648	52	25.3	56.3%	47.1%
DHE	203	918	70	19.0	42.2%	65.7%
DHE	204	638	30	21.0	46.7%	67.0%
DHE	236	380	30	28.0	62.2%	75.7%
DHE	237	380	30	24.9	55.4%	69.4%
EH	204	570	30	23.7	52.6%	70.7%
EH	206	570	30	35.0	77.8%	66.9%
EH	208	720	40	32.3	71.7%	75.8%
EH	210	720	45	27.8	61.9%	81.0%
EH	212	720	40	41.1	91.4%	60.9%
EH	214	837	48	33.9	75.2%	80.0%
EH	235	1,054	40	21.8	48.4%	62.4%
EH	237	1,054	40	34.3	76.3%	52.8%
EH	239	1,054	40	33.9	75.4%	65.8%
HBB	1005	1,828	80	32.4	72.1%	49.2%
HBB	1006	1,563	50	29.2	64.8%	27.0%
HBB	1031	729	30	35.0	77.9%	47.5%
HBB	1050	4,384	200	35.7	79.3%	69.6%
HBB	2023	1,442	50	31.0	68.9%	37.6%
HBB	2085	1,213	55	35.0	77.8%	32.1%
HBB	2086	1,307	60	30.7	68.2%	46.7%
HBB	4043	1,938	80	20.3	45.1%	61.8%
HBB	4050	2,695	112	22.0	48.9%	67.0%
HBB	5036	1,208	50	29.0	64.5%	64.4%
HBB	5037	1,967	80	37.5	83.4%	63.6%
HBB	5045	2,730	112	38.4	85.4%	67.8%
HHS	190	2,024	187	36.0	80.0%	59.2%
HHS	195	2,254	187	40.1	89.2%	73.3%
HHS	220	550	40	27.0	60.0%	80.4%
HHS	225	414	30	23.3	51.9%	70.2%
NFH	156	1,980	144	40.3	89.6%	77.5%
ODH	202A	1,344	83	29.5	65.5%	71.5%
ODH	202B	1,848	111	33.1	73.6%	70.6%
ODH	202C	1,394	83	27.0	60.0%	61.9%
PH	302	1,711	72	30.9	68.7%	72.4%
PH	306	957	48	32.2	71.6%	66.2%
PH	307	925	49	31.0	68.9%	59.1%
PH	308	928	48	32.0	71.1%	64.6%
PH	309	925	49	30.3	67.4%	75.2%
PH	310	754	36	33.8	75.0%	50.1%
PH	312	725	36	37.7	83.7%	45.0%
PH	314	1,248	48	27.0	60.0%	55.5%
PH	316	957	48	35.0	77.8%	57.6%
PH	318	928	48	28.0	62.2%	64.0%
PH	320	754	36	37.1	82.4%	55.6%
SEB	93	570	35	22.0	48.9%	69.0%
SEB	130	630	42	36.0	80.0%	73.0%

Building	Room	ASF	Capacity	WRH	WRH%	Station Occupancy
SEB	164	1,134	70	40.0	88.9%	68.6%
SEB	168	1,107	70	38.0	84.4%	66.2%
SEB	172	1,134	70	35.0	77.8%	70.2%
SEB	185	840	50	36.5	81.1%	67.8%
SEB	187	540	36	35.0	77.8%	89.1%
SEB	364	400	26	24.7	54.8%	65.2%
SEB	372	960	50	2.3	5.2%	12.7%
SEB	376	600	28	29.7	65.9%	51.8%
SEB	378	600	30	30.0	66.7%	40.9%
SEB	384	660	44	29.2	64.8%	67.9%
SEB	386	600	40	34.0	75.6%	66.1%
SEB	388	600	30	36.7	81.5%	52.0%
SFH	163	816	63	19.0	42.2%	83.3%
SFH	164	644	48	39.7	88.2%	51.7%
SFH	165	945	63	19.0	42.2%	70.0%
SFH	166	644	48	30.0	66.7%	48.7%
SFH	167	644	48	30.0	66.7%	46.8%
SFH	168	644	48	34.0	75.6%	54.5%
SFH	169	644	40	36.0	80.0%	48.0%
SFH	170	644	48	27.7	61.5%	64.5%
SFH	171	644	30	32.0	71.1%	59.3%
SFH	172	644	48	35.3	78.5%	43.8%
SFH	173	644	48	39.0	86.7%	51.8%
SFH	174	644	48	40.0	88.9%	49.4%
SFH	176	702	48	30.7	68.2%	46.8%
SFH	263	980	65	34.6	76.9%	80.8%
SFH	265	420	25	30.7	68.2%	39.8%
SFH	266	644	48	40.0	88.9%	57.3%
SFH	268	644	48	37.3	83.0%	45.1%
SFH	269	644	48	28.0	62.2%	52.7%
SFH	270	644	48	36.5	81.2%	47.9%
SFH	271	644	48	31.3	69.5%	53.9%
SFH	272	644	48	36.0	80.0%	57.2%
SFH	273	644	48	32.0	71.1%	50.3%
SFH	274	644	48	40.0	88.9%	49.8%
SFH	276	728	48	33.7	74.8%	44.0%
SFH	363	980	70	36.0	80.0%	72.9%
SFH	364	644	48	30.9	68.7%	66.4%
SFH	365	980	75	31.0	68.9%	77.8%
SFH	366	644	48	34.9	77.5%	48.5%
SFH	367	644	48	28.2	62.7%	49.3%
SFH	368	644	48	34.7	77.0%	53.0%
SFH	369	644	48	36.0	80.0%	46.3%
SFH	370	644	48	26.2	58.3%	43.4%
SFH	371	644	48	30.7	68.2%	50.6%
SFH	372	644	48	29.3	65.2%	60.3%
SFH	373	644	48	24.0	53.4%	36.5%
SFH	374	644	48	29.5	65.7%	61.3%
SFH	376	728	48	29.4	65.2%	37.2%
VAR	205	1,064	85	39.0	86.7%	70.5%
VAR	206	1,102	85	34.0	75.6%	70.2%
VAR	479	966	30	32.0	71.1%	70.5%
WH	102	810	60	31.0	68.9%	69.7%
WH	105	783	60	32.0	71.1%	58.5%
WH	124	529	85	31.0	68.9%	81.1%
WH	301	300	16	20.7	45.9%	56.6%
WH	313	480	30	32.2	71.6%	58.5%
Totals	106	102,015	6,211	3,333.6		
Averages		962	59	31.4	69.9%	63.3%

- Prime Time Utilization 10 am to 3 pm
- 25 Available Hours per Week

Building	Room	ASF	Capacity	WRH	WRH%	Station Occupancy
DHE	200	812	95	22.0	88.0%	64.3%
DHE	201	3,596	314	14.0	56.0%	65.7%
DHE	202	648	52	17.7	70.7%	51.9%
DHE	203	918	70	10.3	41.4%	66.2%
DHE	204	638	30	14.7	58.7%	68.2%
DHE	236	380	30	23.0	92.0%	72.2%
DHE	237	380	30	16.9	67.7%	65.6%
EH	204	570	30	12.7	50.7%	77.5%
EH	206	570	30	22.0	88.0%	71.5%
EH	208	720	40	20.3	81.4%	74.1%
EH	210	720	45	15.3	61.1%	79.5%
EH	212	720	40	24.3	97.0%	58.5%
EH	214	837	48	20.9	83.7%	79.1%
EH	235	1,054	40	11.9	47.4%	65.7%
EH	237	1,054	40	21.3	85.3%	47.0%
EH	239	1,054	40	16.9	67.7%	80.7%
HHB	1005	1,828	80	17.4	69.8%	41.3%
HHB	1006	1,563	50	21.1	84.6%	26.9%
HHB	1031	729	30	22.0	88.0%	50.0%
HHB	1050	4,384	200	18.7	74.7%	72.4%
HHB	2023	1,442	50	14.0	56.0%	38.0%
HHB	2085	1,213	55	22.0	88.0%	32.2%
HHB	2086	1,307	60	21.7	86.7%	43.1%
HHB	4043	1,938	80	10.2	40.7%	68.2%
HHB	4050	2,695	112	15.3	61.3%	67.9%
HHB	5036	1,208	50	15.9	63.5%	64.3%
HHB	5037	1,967	80	21.9	87.7%	67.1%
HHB	5045	2,730	112	23.5	94.0%	65.2%
HHS	190	2,024	187	19.0	76.0%	51.0%
HHS	195	2,254	187	23.1	92.5%	63.1%
HHS	220	550	40	16.0	64.0%	81.9%
HHS	225	414	30	16.0	64.0%	67.2%
NFH	156	1,980	144	22.7	90.6%	73.0%
ODH	202A	1,344	83	18.0	72.0%	75.9%
ODH	202B	1,848	111	20.1	80.4%	69.1%
ODH	202C	1,394	83	17.0	68.0%	52.7%
PH	302	1,711	72	17.9	71.7%	72.0%
PH	306	957	48	23.0	92.0%	71.4%
PH	307	925	49	22.0	88.0%	62.5%
PH	308	928	48	23.0	92.0%	65.9%
PH	309	925	49	21.3	85.3%	80.1%
PH	310	754	36	19.8	79.1%	52.7%
PH	312	725	36	21.3	85.3%	47.7%
PH	314	1,248	48	22.0	88.0%	58.5%
PH	316	957	48	22.0	88.0%	58.9%
PH	318	928	48	22.7	90.7%	69.3%
PH	320	754	36	21.3	85.4%	59.9%
SEB	93	570	35	15.3	61.3%	81.6%
SEB	130	630	42	23.0	92.0%	86.5%
SEB	164	1,134	70	23.0	92.0%	61.4%
SEB	168	1,107	70	22.0	88.0%	70.5%
SEB	172	1,134	70	22.0	88.0%	71.9%
SEB	185	840	50	22.0	88.0%	75.3%
SEB	187	540	36	19.0	76.0%	94.2%
SEB	364	400	26	17.3	69.4%	69.2%
SEB	372	960	50	2.3	9.3%	12.7%
SEB	376	600	28	18.7	74.7%	49.0%
SEB	378	600	30	18.0	72.0%	37.4%

Building	Room	ASF	Capacity	WRH	WRH%	Station Occupancy
SEB	384	660	44	21.2	84.6%	71.8%
SEB	386	600	40	22.0	88.0%	60.2%
SEB	388	600	30	20.7	82.7%	54.2%
SFH	163	816	63	10.0	40.0%	85.4%
SFH	164	644	48	22.0	88.0%	55.6%
SFH	165	945	63	14.0	56.0%	68.0%
SFH	166	644	48	18.0	72.0%	51.1%
SFH	167	644	48	18.0	72.0%	42.6%
SFH	168	644	48	21.0	84.0%	49.3%
SFH	169	644	40	19.7	78.7%	46.6%
SFH	170	644	48	20.7	82.7%	63.5%
SFH	171	644	30	21.3	85.4%	57.2%
SFH	172	644	48	20.3	81.4%	44.4%
SFH	173	644	48	22.0	88.0%	60.2%
SFH	174	644	48	23.0	92.0%	48.7%
SFH	176	702	48	21.7	86.7%	45.6%
SFH	263	980	65	21.6	86.4%	83.1%
SFH	265	420	25	19.0	76.0%	38.1%
SFH	266	644	48	23.0	92.0%	61.0%
SFH	268	644	48	22.3	89.3%	48.7%
SFH	269	644	48	20.0	80.0%	52.9%
SFH	270	644	48	19.5	78.2%	44.8%
SFH	271	644	48	19.3	77.4%	45.1%
SFH	272	644	48	23.0	92.0%	61.3%
SFH	273	644	48	23.0	92.0%	53.4%
SFH	274	644	48	23.0	92.0%	54.7%
SFH	276	728	48	21.3	85.3%	45.4%
SFH	363	980	70	21.0	84.0%	72.3%
SFH	364	644	48	21.9	87.7%	67.7%
SFH	365	980	75	18.0	72.0%	79.4%
SFH	366	644	48	21.7	86.6%	49.7%
SFH	367	644	48	18.7	74.7%	53.1%
SFH	368	644	48	21.9	87.5%	55.6%
SFH	369	644	48	22.0	88.0%	39.6%
SFH	370	644	48	18.9	75.6%	40.7%
SFH	371	644	48	17.3	69.4%	52.9%
SFH	372	644	48	15.3	61.4%	59.7%
SFH	373	644	48	18.0	72.0%	37.5%
SFH	374	644	48	22.0	88.0%	63.4%
SFH	376	728	48	17.3	69.4%	33.5%
VAR	205	1,064	85	22.0	88.0%	78.6%
VAR	206	1,102	85	22.0	88.0%	65.5%
VAR	479	966	30	20.0	80.0%	78.9%
WH	102	810	60	22.0	88.0%	74.2%
WH	105	783	60	23.0	92.0%	62.2%
WH	124	529	85	22.0	88.0%	84.9%
WH	301	300	16	10.7	42.7%	78.1%
WH	313	480	30	20.7	82.7%	59.1%
Totals	106	102,015	6,211	2,066.0		
Averages		962	59	19.5	78.0%	61.8%

#### Report 4 – Fall 2013

- Off Peak Utilization 8 am to 10 am and 3 pm to 5 pm
- 20 Available Hours per Week

Building	Room	ASF	Capacity	WRH	WRH%	Station Occupancy
DHE	200	812	95	16.0	80.0%	86.3%
DHE	201	3,596	314	17.5	87.6%	55.4%
DHE	202	648	52	7.7	38.4%	36.1%
DHE	203	918	70	8.7	43.4%	65.1%

Building	Room	ASF	Capacity	WRH	WRH%	Station Occupancy
DHE	204	638	30	6.3	31.7%	64.4%
DHE	236	380	30	5.0	25.0%	92.0%
DHE	237	380	30	8.0	40.0%	77.5%
EH	204	570	30	11.0	55.0%	62.7%
EH	206	570	30	13.0	65.0%	59.0%
EH	208	720	40	11.9	59.5%	78.8%
EH	210	720	45	12.6	62.8%	83.0%
EH	212	720	40	16.9	84.3%	64.4%
EH	214	837	48	12.9	64.7%	81.4%
EH	235	1,054	40	9.9	49.7%	58.5%
EH	237	1,054	40	13.0	65.1%	62.3%
EH	239	1,054	40	17.0	85.0%	51.0%
HBB	1005	1,828	80	15.0	75.0%	58.5%
HBB	1006	1,563	50	8.0	40.1%	27.4%
HBB	1031	729	30	13.0	65.2%	43.2%
HBB	1050	4,384	200	17.0	85.0%	66.6%
HBB	2023	1,442	50	17.0	85.0%	37.2%
HBB	2085	1,213	55	13.0	65.0%	31.9%
HBB	2086	1,307	60	9.0	45.0%	55.4%
HBB	4043	1,938	80	10.1	50.6%	55.3%
HBB	4050	2,695	112	6.7	33.4%	64.9%
HBB	5036	1,208	50	13.2	65.8%	64.5%
HBB	5037	1,967	80	15.6	78.0%	58.7%
HBB	5045	2,730	112	14.9	74.7%	71.9%
HHS	190	2,024	187	17.0	85.0%	68.3%
HHS	195	2,254	187	17.0	85.0%	87.0%
HHS	220	550	40	11.0	55.0%	78.2%
HHS	225	414	30	7.3	36.7%	76.8%
NFH	156	1,980	144	17.7	88.4%	83.2%
ODH	202A	1,344	83	11.5	57.4%	64.7%
ODH	202B	1,848	111	13.0	65.0%	73.0%
ODH	202C	1,394	83	10.0	50.0%	77.6%
PH	302	1,711	72	13.0	65.0%	73.0%
PH	306	957	48	9.2	45.9%	53.1%
PH	307	925	49	9.0	45.0%	50.8%
PH	308	928	48	9.0	45.0%	61.3%
PH	309	925	49	9.0	45.1%	63.5%
PH	310	754	36	14.0	70.0%	46.4%
PH	312	725	36	16.3	81.7%	41.4%
PH	314	1,248	48	5.0	25.0%	42.1%
PH	316	957	48	13.0	65.0%	55.4%
PH	318	928	48	5.3	26.7%	41.7%
PH	320	754	36	15.8	78.8%	49.9%
SEB	93	570	35	6.7	33.4%	40.0%
SEB	130	630	42	13.0	65.0%	49.1%
SEB	164	1,134	70	17.0	85.0%	78.3%
SEB	168	1,107	70	16.0	80.0%	60.2%
SEB	172	1,134	70	13.0	65.0%	67.4%
SEB	185	840	50	14.5	72.5%	56.5%
SEB	187	540	36	16.0	80.0%	83.2%
SEB	364	400	26	7.3	36.7%	55.6%
SEB	372	960	50	0.0	0.0%	0.0%
SEB	376	600	28	11.0	55.0%	56.5%
SEB	378	600	30	12.0	60.0%	46.1%
SEB	384	660	44	8.0	40.0%	57.7%
SEB	386	600	40	12.0	60.0%	76.9%
SEB	388	600	30	16.0	80.0%	49.2%
SFH	163	816	63	9.0	45.0%	81.0%
SFH	164	644	48	17.7	88.3%	46.9%
SFH	165	945	63	5.0	25.0%	75.6%
SFH	166	644	48	12.0	60.0%	45.1%
SFH	167	644	48	12.0	60.0%	53.1%



Building	Room	ASF	Capacity	WRH	WRH%	Station Occupancy
SFH	168	644	48	13.0	65.0%	63.0%
SFH	169	644	40	16.3	81.7%	49.6%
SFH	170	644	48	7.0	35.0%	67.6%
SFH	171	644	30	10.7	53.4%	63.5%
SFH	172	644	48	15.0	75.0%	42.9%
SFH	173	644	48	17.0	85.0%	40.8%
SFH	174	644	48	17.0	85.0%	50.2%
SFH	176	702	48	9.0	45.0%	49.8%
SFH	263	980	65	13.0	65.0%	76.9%
SFH	265	420	25	11.7	58.4%	42.6%
SFH	266	644	48	17.0	85.0%	52.3%
SFH	268	644	48	15.0	75.1%	39.7%
SFH	269	644	48	8.0	40.0%	52.1%
SFH	270	644	48	17.0	85.0%	51.5%
SFH	271	644	48	11.9	59.7%	68.1%
SFH	272	644	48	13.0	65.0%	49.8%
SFH	273	644	48	9.0	45.0%	42.4%
SFH	274	644	48	17.0	85.0%	43.1%
SFH	276	728	48	12.3	61.7%	41.6%
SFH	363	980	70	15.0	75.0%	73.6%
SFH	364	644	48	9.0	45.0%	63.4%
SFH	365	980	75	13.0	65.0%	75.7%
SFH	366	644	48	13.2	66.1%	46.6%
SFH	367	644	48	9.6	47.8%	41.8%
SFH	368	644	48	12.8	63.9%	48.5%
SFH	369	644	48	14.0	70.0%	56.8%
SFH	370	644	48	7.3	36.7%	50.4%
SFH	371	644	48	13.3	66.7%	47.7%
SFH	372	644	48	14.0	70.0%	61.0%
SFH	373	644	48	6.0	30.0%	33.3%
SFH	374	644	48	7.5	37.7%	55.1%
SFH	376	728	48	12.0	60.1%	42.6%
VAR	205	1,064	85	17.0	85.0%	60.0%
VAR	206	1,102	85	12.0	60.0%	78.8%
VAR	479	966	30	12.0	60.1%	56.7%
WH	102	810	60	9.0	45.0%	58.5%
WH	105	783	60	9.0	45.0%	49.3%
WH	124	529	85	9.0	45.0%	71.6%
WH	301	300	16	10.0	50.0%	33.8%
WH	313	480	30	11.6	57.8%	57.3%
Totals	106	102,015	6,211	1,267.6		
Averages		962	59	12.0	59.8%	65.7%

## Report 5 – Fall 2013

- Evening Utilization 5 pm to 10 pm
- 25 Available Hours per Week

Building	Room	ASF	Capacity	WRH	WRH%	Station Occupancy
DHE	200	812	95	18.0	72.0%	56.0%
DHE	201	3,596	314	5.0	20.0%	26.6%
DHE	202	648	52	8.0	32.0%	32.7%
DHE	203	918	70	17.1	68.4%	85.4%
DHE	204	638	30	10.7	42.9%	30.0%
DHE	236	380	30	12.0	48.0%	18.9%
DHE	237	380	30	14.0	56.0%	38.6%
EH	204	570	30	14.2	56.8%	64.1%
EH	206	570	30	11.7	46.6%	53.5%
EH	208	720	40	13.2	52.8%	61.0%
EH	210	720	45	12.2	48.8%	48.9%
EH	212	720	40	12.7	50.8%	47.6%

Building	Room	ASF	Capacity	WRH	WRH%	Station Occupancy
EH	214	837	48	12.7	50.8%	63.4%
EH	235	1,054	40	15.4	61.7%	61.6%
EH	237	1,054	40	16.4	65.7%	57.0%
EH	239	1,054	40	13.7	54.8%	45.4%
HHB	1005	1,828	80	11.6	46.6%	54.7%
HHB	1006	1,563	50	12.2	48.6%	60.1%
HHB	1031	729	30	6.8	27.1%	29.8%
HHB	1050	4,384	200	4.6	18.2%	66.7%
HHB	2023	1,442	50	11.3	45.3%	55.0%
HHB	2085	1,213	55	13.7	54.6%	62.8%
HHB	2086	1,307	60	11.0	43.9%	49.0%
HHB	4043	1,938	80	13.8	55.0%	30.4%
HHB	4050	2,695	112	10.0	40.0%	49.4%
HHB	5036	1,208	50	12.1	48.6%	41.7%
HHB	5037	1,967	80	14.4	57.5%	49.0%
HHB	5045	2,730	112	10.5	42.1%	57.5%
HHS	190	2,024	187	8.0	32.0%	48.4%
HHS	195	2,254	187	4.1	16.2%	32.9%
HHS	220	550	40	14.8	59.1%	37.7%
HHS	225	414	30	10.0	40.0%	62.3%
NFH	156	1,980	144	9.1	36.2%	50.4%
ODH	202A	1,344	83	6.0	24.0%	75.1%
ODH	202B	1,848	111	4.6	18.2%	55.1%
ODH	202C	1,394	83	12.0	48.0%	34.9%
PH	302	1,711	72	13.7	54.8%	51.2%
PH	306	957	48	14.2	56.8%	51.0%
PH	307	925	49	11.6	46.6%	41.4%
PH	308	928	48	10.6	42.6%	45.1%
PH	309	925	49	13.2	52.8%	28.0%
PH	310	754	36	14.2	56.8%	77.1%
PH	312	725	36	11.7	46.6%	27.0%
PH	314	1,248	48	14.7	58.8%	42.6%
PH	316	957	48	15.2	60.8%	41.9%
PH	318	928	48	14.2	56.8%	21.9%
PH	320	754	36	15.8	63.0%	54.6%
SEB	93	570	35	15.4	61.5%	57.4%
SEB	130	630	42	16.0	64.0%	21.4%
SEB	164	1,134	70	16.0	64.0%	58.2%
SEB	168	1,107	70	14.0	56.0%	74.3%
SEB	172	1,134	70	17.0	68.0%	39.9%
SEB	185	840	50	17.5	70.0%	33.4%
SEB	187	540	36	13.0	52.0%	42.1%
SEB	364	400	26	15.8	63.1%	53.0%
SEB	372	960	50	12.0	48.0%	36.0%
SEB	376	600	28	17.0	68.0%	29.8%
SEB	378	600	30	18.0	72.0%	34.8%
SEB	384	660	44	14.0	56.0%	38.1%
SEB	386	600	40	18.0	72.0%	42.9%
SEB	388	600	30	16.3	65.1%	42.8%
SFH	163	816	63	14.7	58.8%	62.4%
SFH	164	644	48	16.6	66.4%	30.5%
SFH	165	945	63	8.1	32.4%	83.5%
SFH	166	644	48	15.7	62.8%	48.2%
SFH	167	644	48	15.7	62.8%	42.7%
SFH	168	644	48	14.8	59.0%	36.7%
SFH	169	644	40	14.8	59.0%	52.7%
SFH	170	644	48	13.2	52.8%	54.4%
SFH	171	644	30	10.6	42.6%	61.1%
SFH	172	644	48	15.7	62.8%	44.5%
SFH	173	644	48	12.1	48.2%	35.8%
SFH	174	644	48	10.1	40.6%	61.7%
SFH	176	702	48	13.7	54.8%	54.1%

Building	Room	ASF	Capacity	WRH	WRH%	Station Occupancy
SFH	263	980	65	8.1	32.4%	76.5%
SFH	265	420	25	7.1	28.4%	42.0%
SFH	266	644	48	13.9	55.5%	48.6%
SFH	268	644	48	14.2	56.8%	53.1%
SFH	269	644	48	14.2	56.8%	49.5%
SFH	270	644	48	16.1	64.4%	37.1%
SFH	271	644	48	11.7	46.6%	52.8%
SFH	272	644	48	10.6	42.6%	29.2%
SFH	273	644	48	14.2	56.8%	47.9%
SFH	274	644	48	9.6	38.2%	37.5%
SFH	276	728	48	14.7	58.8%	60.3%
SFH	363	980	70	10.1	40.6%	54.4%
SFH	364	644	48	13.7	54.8%	64.3%
SFH	365	980	75	17.0	68.0%	76.4%
SFH	366	644	48	7.1	28.4%	65.6%
SFH	367	644	48	10.6	42.6%	54.9%
SFH	368	644	48	13.7	54.8%	56.3%
SFH	369	644	48	10.6	42.4%	42.5%
SFH	370	644	48	13.2	52.8%	33.0%
SFH	371	644	48	10.6	42.6%	47.2%
SFH	372	644	48	13.2	52.8%	40.2%
SFH	373	644	48	10.1	40.6%	37.1%
SFH	374	644	48	7.1	28.4%	59.4%
SFH	376	728	48	15.1	60.4%	36.1%
VAR	205	1,064	85	16.9	67.7%	61.0%
VAR	206	1,102	85	16.2	64.8%	65.0%
VAR	479	966	30	10.6	42.6%	78.9%
WH	102	810	60	8.6	34.2%	66.7%
WH	105	783	60	10.6	42.6%	53.3%
WH	124	529	85	9.0	36.0%	16.7%
WH	301	300	16	13.1	52.4%	55.2%
WH	313	480	30	10.6	42.6%	54.4%
Totals	106	102,015	6,211	1,334.4		
Averages		962	59	12.6	50.4%	45.7%

## Report 6 – Fall 2013

- Saturday Utilization 8 am to 5 pm
- 9 Available Hours per Week

Building	Room	ASF	Capacity	WRH	WRH%	Station Occupancy
DHE	201	3596	314	3.22	35.8%	21.0%
DHE	236	380	30	3.72	41.3%	56.7%
EH	204	570	30	3.55	39.4%	23.3%
EH	206	570	30	3.55	39.4%	80.0%
EH	212	720	40	3.05	33.9%	80.0%
EH	214	837	48	3.22	35.8%	39.6%
EH	235	1054	40	8.27	91.9%	35.4%
EH	237	1054	40	8.77	97.4%	35.0%
PH	306	957	48	5.22	58.0%	31.3%
PH	309	925	49	7.88	87.6%	16.3%
PH	312	725	36	6.22	69.1%	41.7%
PH	314	1248	48	6.22	69.1%	31.3%
PH	320	754	36	7.10	78.9%	25.0%
SEB	164	1134	70	2.22	24.7%	52.9%
SEB	168	1107	70	2.22	24.7%	131.4%
SEB	185	840	50	2.22	24.7%	82.0%
SEB	187	540	36	3.72	41.3%	11.1%
VAR	205	1064	85	3.55	39.4%	10.6%
WH	105	783	60	2.22	24.7%	90.0%
WH	313	480	30	3.55	39.4%	70.0%

Totals	20	19,338	1,190	90		
Averages		967	60	4.5	49.8%	33.6%

## Report 7 – Winter 2014

- All Day Utilization 8 am to 10 pm
- 75 Available Hours per Week

Building	Room	ASF	Capacity	WRH	WRH%	Station Occupancy
DHE	200	812	95	51.1	68.2%	52.8%
DHE	201	3,596	314	34.7	46.3%	31.1%
DHE	202	648	52	36.3	48.4%	46.9%
DHE	203	918	70	28.0	37.3%	60.1%
DHE	204	638	30	34.0	45.3%	36.5%
DHE	236	380	30	36.0	48.0%	55.6%
DHE	237	380	30	32.0	42.7%	56.7%
EH	204	570	30	48.6	64.8%	65.0%
EH	206	570	30	40.0	53.3%	47.8%
EH	208	720	40	38.3	51.1%	62.9%
EH	210	720	45	44.0	58.7%	53.3%
EH	212	720	40	53.8	71.7%	68.6%
EH	214	837	48	46.7	62.3%	48.2%
EH	235	1,054	40	45.6	60.9%	60.2%
EH	237	1,054	40	50.4	67.2%	57.6%
EH	239	1,054	40	35.1	46.7%	71.0%
HHB	1005	1,828	80	29.1	38.8%	46.4%
HHB	1006	1,563	50	48.9	65.2%	54.5%
HHB	1031	729	30	27.7	37.0%	50.6%
HHB	1050	4,384	200	34.7	46.2%	65.8%
HHB	2023	1,442	50	39.4	52.5%	62.9%
HHB	2085	1,213	55	35.0	46.7%	52.8%
HHB	2086	1,307	60	29.5	39.4%	44.6%
HHB	4043	1,938	80	31.4	41.9%	59.1%
HHB	4050	2,695	112	33.3	44.4%	75.0%
HHB	5036	1,208	50	44.3	59.1%	68.0%
HHB	5037	1,967	80	31.3	41.7%	46.7%
HHB	5045	2,730	112	42.9	57.2%	69.6%
HHS	190	2,024	187	40.0	53.3%	74.6%
HHS	195	2,254	187	49.1	65.5%	56.5%
HHS	220	550	40	40.0	53.3%	60.0%
HHS	225	414	30	38.8	51.7%	48.1%
NFH	156	1,980	144	39.1	52.1%	74.6%
ODH	202A	1,344	83	36.4	48.5%	61.9%
ODH	202B	1,848	111	39.1	52.1%	63.0%
ODH	202C	1,394	83	34.3	45.8%	54.6%
PH	302	1,711	72	45.1	60.2%	49.3%
PH	306	957	48	40.9	54.6%	57.9%
PH	307	925	49	44.7	59.7%	43.6%
PH	308	928	48	27.7	37.0%	50.1%
PH	309	925	49	46.2	61.6%	55.5%
PH	310	754	36	48.5	64.6%	57.5%
PH	312	725	36	43.1	57.5%	48.4%
PH	314	1,248	48	49.4	65.8%	55.6%
PH	316	957	48	46.2	61.6%	64.6%
PH	318	928	48	45.3	60.4%	46.8%
PH	320	754	36	43.5	58.0%	54.8%
SEB	93	570	35	34.2	45.6%	42.8%
SEB	130	630	42	40.0	53.3%	64.5%
SEB	164	1,134	70	48.0	64.0%	58.7%
SEB	168	1,107	70	50.0	66.7%	53.5%
SEB	172	1,134	70	43.2	57.6%	52.6%
SEB	185	840	50	48.9	65.2%	55.2%
SEB	187	540	36	40.0	53.3%	55.6%
SEB	364	400	26	32.0	42.7%	45.2%
SEB	372	960	50	16.2	21.6%	50.2%

Building	Room	ASF	Capacity	WRH	WRH%	Station Occupancy
SEB	376	600	28	40.0	53.3%	38.2%
SEB	378	600	30	40.0	53.3%	63.0%
SEB	384	660	44	54.0	72.0%	46.1%
SEB	386	600	40	48.0	64.0%	45.8%
SEB	388	600	30	41.4	55.2%	46.9%
SFH	163	816	63	44.5	59.4%	75.4%
SFH	164	644	48	48.4	64.5%	50.3%
SFH	165	945	63	31.1	41.5%	81.0%
SFH	166	644	48	38.4	51.2%	59.7%
SFH	167	644	48	47.5	63.3%	49.0%
SFH	168	644	48	46.2	61.6%	53.0%
SFH	169	644	40	46.2	61.6%	62.1%
SFH	170	644	48	51.6	68.9%	41.5%
SFH	171	644	30	51.1	68.1%	55.2%
SFH	172	644	48	43.0	57.4%	45.6%
SFH	173	644	48	44.2	58.9%	53.8%
SFH	174	644	48	47.5	63.3%	59.1%
SFH	176	702	48	35.1	46.8%	42.6%
SFH	263	980	65	37.0	49.4%	70.2%
SFH	265	420	25	34.8	46.4%	50.7%
SFH	266	644	48	41.8	55.7%	60.8%
SFH	268	644	48	45.7	60.9%	57.6%
SFH	269	644	48	50.1	66.9%	60.5%
SFH	270	644	48	43.7	58.2%	41.9%
SFH	271	644	48	52.4	69.9%	55.5%
SFH	272	644	48	36.9	49.2%	50.7%
SFH	273	644	48	42.6	56.9%	50.3%
SFH	274	644	48	49.7	66.3%	46.7%
SFH	276	728	48	49.7	66.3%	43.3%
SFH	363	980	70	35.1	46.8%	72.1%
SFH	364	644	48	46.7	62.2%	39.9%
SFH	365	980	75	43.4	57.9%	65.6%
SFH	366	644	48	44.4	59.2%	47.1%
SFH	367	644	48	31.5	42.0%	47.4%
SFH	368	644	48	38.6	51.5%	43.8%
SFH	369	644	48	44.0	58.7%	50.6%
SFH	370	644	48	49.7	66.3%	43.0%
SFH	371	644	48	43.6	58.1%	43.2%
SFH	372	644	48	37.8	50.4%	49.9%
SFH	373	644	48	40.4	53.9%	45.5%
SFH	374	644	48	41.3	55.0%	56.2%
SFH	376	728	48	44.4	59.3%	43.7%
VAR	205	1,064	85	50.2	66.9%	52.8%
VAR	206	1,102	85	53.1	70.8%	52.1%
VAR	479	966	30	50.2	66.9%	69.6%
WH	102	810	60	43.1	57.5%	67.1%
WH	105	783	60	31.1	41.5%	75.4%
WH	124	529	85	34.6	46.1%	55.9%
WH	301	300	16	34.7	46.2%	54.6%
WH	313	480	30	40.5	54.0%	55.6%
Totals	106	102,015	6,211	4,393.4		
Averages		962	59	41.4	55.3%	54.9%

## Report 8 – Winter 2014

- Daytime Utilization 8 am to 5 pm
- 45 Available Hours per Week

Building	Room	ASF	Capacity	WRH	WRH%	Station Occupancy
DHE	200	812.0	95.0	34.1	75.9%	65.6%
DHE	201	3,596.0	314.0	30.7	68.3%	32.0%
DHE	202	648.0	52.0	24.3	53.9%	52.7%
DHE	203	918.0	70.0	23.0	51.1%	68.4%
DHE	204	638.0	30.0	22.0	48.9%	44.8%
DHE	236	380.0	30.0	23.0	51.1%	76.4%
DHE	237	380.0	30.0	20.0	44.4%	70.0%
EH	204	570.0	30.0	34.9	77.6%	60.2%
EH	206	570.0	30.0	24.7	54.8%	43.2%
EH	208	720.0	40.0	26.1	58.1%	62.3%
EH	210	720.0	45.0	31.8	70.6%	51.7%
EH	212	720.0	40.0	40.1	89.1%	67.2%
EH	214	837.0	48.0	34.0	75.6%	53.1%
EH	235	1,054.0	40.0	29.7	66.0%	59.9%
EH	237	1,054.0	40.0	33.9	75.4%	61.6%
EH	239	1,054.0	40.0	20.9	46.4%	69.2%
HHB	1005	1,828.0	80.0	17.5	39.0%	44.5%
HHB	1006	1,563.0	50.0	38.8	86.2%	50.1%
HHB	1031	729.0	30.0	22.7	50.4%	55.9%
HHB	1050	4,384.0	200.0	23.0	51.1%	74.9%
HHB	2023	1,442.0	50.0	24.7	55.0%	59.2%
HHB	2085	1,213.0	55.0	29.0	64.4%	53.0%
HHB	2086	1,307.0	60.0	20.0	44.4%	46.7%
HHB	4043	1,938.0	80.0	23.0	51.1%	68.9%
HHB	4050	2,695.0	112.0	22.6	50.3%	77.7%
HHB	5036	1,208.0	50.0	31.2	69.4%	67.6%
HHB	5037	1,967.0	80.0	19.7	43.8%	49.6%
HHB	5045	2,730.0	112.0	35.2	78.3%	76.6%
HHS	190	2,024.0	187.0	35.0	77.8%	79.2%
HHS	195	2,254.0	187.0	40.1	89.2%	59.1%
HHS	220	550.0	40.0	28.0	62.2%	69.3%
HHS	225	414.0	30.0	23.0	51.1%	59.7%
NFH	156	1,980.0	144.0	31.0	68.9%	84.9%
ODH	202A	1,344.0	83.0	27.9	62.0%	61.6%
ODH	202B	1,848.0	111.0	31.0	68.9%	64.8%
ODH	202C	1,394.0	83.0	20.1	44.7%	68.4%
PH	302	1,711.0	72.0	29.9	66.5%	59.0%
PH	306	957.0	48.0	30.3	67.3%	59.5%
PH	307	925.0	49.0	34.1	75.8%	52.3%
PH	308	928.0	48.0	17.1	38.0%	53.2%
PH	309	925.0	49.0	31.0	68.9%	57.9%
PH	310	754.0	36.0	33.3	73.9%	54.0%
PH	312	725.0	36.0	28.9	64.2%	50.3%
PH	314	1,248.0	48.0	36.0	80.0%	64.6%
PH	316	957.0	48.0	32.0	71.1%	79.2%
PH	318	928.0	48.0	30.1	66.9%	52.7%
PH	320	754.0	36.0	29.3	65.1%	61.2%
SEB	93	570.0	35.0	22.7	50.4%	52.2%
SEB	130	630.0	42.0	29.0	64.4%	68.5%
SEB	164	1,134.0	70.0	30.0	66.7%	65.2%
SEB	168	1,107.0	70.0	32.0	71.1%	64.0%
SEB	172	1,134.0	70.0	30.0	66.7%	63.9%
SEB	185	840.0	50.0	35.9	79.8%	66.4%
SEB	187	540.0	36.0	23.0	51.1%	64.1%
SEB	364	400.0	26.0	27.0	60.0%	49.6%
SEB	372	960.0	50.0	4.2	9.3%	8.5%
SEB	376	600.0	28.0	23.0	51.1%	42.2%

Building	Room	ASF	Capacity	WRH	WRH%	Station Occupancy
SEB	378	600.0	30.0	22.0	48.9%	72.7%
SEB	384	660.0	44.0	38.0	84.4%	57.9%
SEB	386	600.0	40.0	34.0	75.6%	54.3%
SEB	388	600.0	30.0	30.3	67.4%	50.1%
SFH	163	816.0	63.0	33.4	74.2%	86.8%
SFH	164	644.0	48.0	33.7	74.8%	54.0%
SFH	165	945.0	63.0	24.0	53.3%	88.1%
SFH	166	644.0	48.0	24.7	54.8%	63.8%
SFH	167	644.0	48.0	35.3	78.5%	44.7%
SFH	168	644.0	48.0	31.0	68.9%	55.1%
SFH	169	644.0	40.0	31.0	68.9%	64.5%
SFH	170	644.0	48.0	39.0	86.7%	39.4%
SFH	171	644.0	30.0	39.0	86.7%	53.7%
SFH	172	644.0	48.0	36.0	80.0%	45.8%
SFH	173	644.0	48.0	32.0	71.1%	53.6%
SFH	174	644.0	48.0	37.3	83.0%	59.6%
SFH	176	702.0	48.0	28.0	62.2%	37.8%
SFH	263	980.0	65.0	21.9	48.7%	67.3%
SFH	265	420.0	25.0	28.0	62.2%	50.9%
SFH	266	644.0	48.0	30.6	68.0%	68.2%
SFH	268	644.0	48.0	32.0	71.1%	54.9%
SFH	269	644.0	48.0	35.4	78.8%	65.6%
SFH	270	644.0	48.0	27.0	60.0%	38.2%
SFH	271	644.0	48.0	36.3	80.8%	62.1%
SFH	272	644.0	48.0	29.4	65.2%	49.9%
SFH	273	644.0	48.0	31.0	68.9%	55.1%
SFH	274	644.0	48.0	36.0	80.0%	43.8%
SFH	276	728.0	48.0	35.0	77.8%	41.0%
SFH	363	980.0	70.0	19.0	42.2%	71.7%
SFH	364	644.0	48.0	31.6	70.1%	49.1%
SFH	365	980.0	75.0	34.3	76.2%	72.7%
SFH	366	644.0	48.0	30.2	67.2%	42.0%
SFH	367	644.0	48.0	24.9	55.3%	44.3%
SFH	368	644.0	48.0	32.0	71.1%	37.5%
SFH	369	644.0	48.0	33.3	74.1%	50.8%
SFH	370	644.0	48.0	35.0	77.8%	37.3%
SFH	371	644.0	48.0	32.0	71.1%	46.3%
SFH	372	644.0	48.0	25.7	57.1%	44.9%
SFH	373	644.0	48.0	28.4	63.0%	46.2%
SFH	374	644.0	48.0	29.7	65.9%	57.6%
SFH	376	728.0	48.0	29.4	65.2%	44.2%
VAR	205	1,064.0	85.0	36.0	80.0%	57.0%
VAR	206	1,102.0	85.0	36.9	82.1%	55.2%
VAR	479	966.0	30.0	35.0	77.8%	70.7%
WH	102	810.0	60.0	35.0	77.8%	69.0%
WH	105	783.0	60.0	24.0	53.3%	77.8%
WH	124	529.0	85.0	28.0	62.2%	60.5%
WH	301	300.0	16.0	23.0	51.1%	53.3%
WH	313	480.0	30.0	29.7	65.9%	56.1%
Totals	106	102,015.0	6,211.0	3,110.1		
Averages		962.4	58.6	29.3	65.2%	59.7%

## Report 9 – Winter 2014

- Prime Time Utilization 10 am to 3 pm
- 25 Available Hours per Week

Building	Room	ASF	Capacity	WRH	WRH%	Station Occupancy
DHE	200	812	95	21.2	84.6%	59.4%
DHE	201	3,596	314	16.7	66.7%	35.7%
DHE	202	648	52	17.9	71.5%	52.2%

Building	Room	ASF	Capacity	WRH	WRH%	Station Occupancy
DHE	203	918	70	14.3	57.4%	66.3%
DHE	204	638	30	16.0	64.0%	51.7%
DHE	236	380	30	14.0	56.0%	80.0%
DHE	237	380	30	14.0	56.0%	70.0%
EH	204	570	30	20.0	80.0%	63.3%
EH	206	570	30	20.7	82.7%	45.4%
EH	208	720	40	19.6	78.4%	56.5%
EH	210	720	45	20.6	82.4%	48.5%
EH	212	720	40	22.8	91.1%	64.4%
EH	214	837	48	18.9	75.7%	48.4%
EH	235	1,054	40	15.9	63.4%	54.5%
EH	237	1,054	40	20.9	83.7%	65.6%
EH	239	1,054	40	13.9	55.4%	76.7%
HHB	1005	1,828	80	15.6	62.2%	48.1%
HHB	1006	1,563	50	22.0	88.0%	49.6%
HHB	1031	729	30	10.3	41.3%	47.4%
HHB	1050	4,384	200	16.0	64.0%	86.9%
HHB	2023	1,442	50	17.2	68.9%	59.7%
HHB	2085	1,213	55	23.0	92.0%	52.0%
HHB	2086	1,307	60	16.0	64.0%	41.3%
HHB	4043	1,938	80	12.0	48.0%	69.2%
HHB	4050	2,695	112	13.1	52.5%	84.8%
HHB	5036	1,208	50	17.9	71.5%	68.1%
HHB	5037	1,967	80	11.0	44.0%	45.5%
HHB	5045	2,730	112	20.0	80.1%	73.9%
HHS	190	2,024	187	18.0	72.0%	76.4%
HHS	195	2,254	187	23.1	92.5%	53.4%
HHS	220	550	40	20.0	80.0%	79.0%
HHS	225	414	30	17.0	68.0%	60.8%
NFH	156	1,980	144	22.0	88.0%	84.8%
ODH	202A	1,344	83	16.4	65.7%	58.3%
ODH	202B	1,848	111	18.0	72.0%	72.9%
ODH	202C	1,394	83	15.1	60.5%	69.2%
PH	302	1,711	72	16.0	64.0%	64.2%
PH	306	957	48	18.0	72.0%	60.4%
PH	307	925	49	21.1	84.4%	51.7%
PH	308	928	48	13.3	53.4%	52.9%
PH	309	925	49	18.0	72.0%	62.8%
PH	310	754	36	22.0	88.0%	56.6%
PH	312	725	36	18.3	73.4%	53.6%
PH	314	1,248	48	23.0	92.0%	71.9%
PH	316	957	48	23.0	92.0%	84.1%
PH	318	928	48	17.6	70.4%	56.9%
PH	320	754	36	17.4	69.8%	62.5%
SEB	93	570	35	18.0	72.0%	52.4%
SEB	130	630	42	17.0	68.0%	68.9%
SEB	164	1,134	70	18.0	72.0%	61.4%
SEB	168	1,107	70	22.0	88.0%	70.9%
SEB	172	1,134	70	18.0	72.0%	69.5%
SEB	185	840	50	20.0	80.0%	68.4%
SEB	187	540	36	16.0	64.0%	67.4%
SEB	364	400	26	18.0	72.0%	44.0%
SEB	372	960	50	4.2	16.7%	8.5%
SEB	376	600	28	16.0	64.0%	28.6%
SEB	378	600	30	14.0	56.0%	73.3%
SEB	384	660	44	21.0	84.0%	59.0%
SEB	386	600	40	18.0	72.0%	65.3%
SEB	388	600	30	20.3	81.4%	59.8%
SFH	163	816	63	21.4	85.6%	96.0%
SFH	164	644	48	22.0	88.0%	60.8%
SFH	165	945	63	20.0	80.0%	87.3%
SFH	166	644	48	18.7	74.7%	68.4%



Building	Room	ASF	Capacity	WRH	WRH%	Station Occupancy
SFH	167	644	48	20.3	81.4%	40.9%
SFH	168	644	48	15.3	61.4%	56.7%
SFH	169	644	40	22.0	88.0%	69.1%
SFH	170	644	48	22.0	88.0%	37.9%
SFH	171	644	30	22.0	88.0%	53.9%
SFH	172	644	48	23.0	92.0%	48.6%
SFH	173	644	48	19.7	78.7%	45.4%
SFH	174	644	48	20.3	81.4%	68.4%
SFH	176	702	48	22.0	88.0%	38.4%
SFH	263	980	65	16.9	67.7%	68.1%
SFH	265	420	25	19.0	76.0%	55.2%
SFH	266	644	48	22.6	90.6%	67.4%
SFH	268	644	48	23.0	92.0%	59.4%
SFH	269	644	48	18.4	73.8%	62.6%
SFH	270	644	48	19.7	78.7%	42.7%
SFH	271	644	48	19.3	77.4%	55.0%
SFH	272	644	48	18.0	72.0%	55.2%
SFH	273	644	48	22.0	88.0%	61.2%
SFH	274	644	48	19.0	76.0%	43.6%
SFH	276	728	48	22.0	88.0%	38.8%
SFH	363	980	70	10.0	40.0%	90.9%
SFH	364	644	48	21.2	84.9%	53.7%
SFH	365	980	75	25.3	101.1%	80.8%
SFH	366	644	48	19.7	78.9%	43.7%
SFH	367	644	48	16.9	67.6%	47.3%
SFH	368	644	48	19.7	78.7%	41.4%
SFH	369	644	48	21.0	84.0%	52.0%
SFH	370	644	48	18.0	72.0%	41.1%
SFH	371	644	48	19.7	78.7%	47.5%
SFH	372	644	48	17.3	69.4%	38.5%
SFH	373	644	48	17.3	69.4%	44.6%
SFH	374	644	48	21.3	85.3%	66.9%
SFH	376	728	48	17.3	69.4%	48.7%
VAR	205	1,064	85	23.0	92.0%	55.3%
VAR	206	1,102	85	21.9	87.7%	54.6%
VAR	479	966	30	20.0	80.0%	68.7%
WH	102	810	60	22.0	88.0%	71.2%
WH	105	783	60	18.0	72.0%	83.7%
WH	124	529	85	19.0	76.0%	64.5%
WH	301	300	16	18.0	72.0%	56.9%
WH	313	480	30	20.7	82.7%	60.1%
Totals	106	102,015	6,211	1,975.7		
Averages		962	59	18.6	74.6%	60.7%

## Report 10 – Winter 2014

- Off Peak Utilization 8 am to 10 am and 3 pm to 5 pm
- 20 Available Hours per Week

Building	Room	ASF	Capacity	WRH	WRH%	Station Occupancy
DHE	200	812.0	95.0	13.0	65.0%	75.7%
DHE	201	3,596.0	314.0	14.0	70.2%	27.7%
DHE	202	648.0	52.0	6.4	31.9%	54.2%
DHE	203	918.0	70.0	8.7	43.4%	71.9%
DHE	204	638.0	30.0	6.0	30.0%	26.7%
DHE	236	380.0	30.0	9.0	45.0%	70.7%
DHE	237	380.0	30.0	6.0	30.0%	70.0%
EH	204	570.0	30.0	14.9	74.7%	56.0%
EH	206	570.0	30.0	4.0	20.0%	31.7%
EH	208	720.0	40.0	6.5	32.7%	79.4%
EH	210	720.0	45.0	11.2	56.0%	57.7%

Building	Room	ASF	Capacity	WRH	WRH%	Station Occupancy
EH	212	720.0	40.0	17.3	86.5%	70.9%
EH	214	837.0	48.0	15.1	75.5%	59.1%
EH	235	1,054.0	40.0	13.9	69.3%	66.0%
EH	237	1,054.0	40.0	13.0	65.0%	55.0%
EH	239	1,054.0	40.0	7.0	35.0%	54.3%
HHB	1005	1,828.0	80.0	2.0	10.0%	16.3%
HHB	1006	1,563.0	50.0	16.8	83.9%	50.7%
HHB	1031	729.0	30.0	12.3	61.7%	63.0%
HHB	1050	4,384.0	200.0	7.0	35.0%	47.5%
HHB	2023	1,442.0	50.0	7.5	37.5%	58.1%
HHB	2085	1,213.0	55.0	6.0	30.0%	57.0%
HHB	2086	1,307.0	60.0	4.0	20.0%	68.3%
HHB	4043	1,938.0	80.0	11.0	55.0%	68.6%
HHB	4050	2,695.0	112.0	9.5	47.5%	67.9%
HHB	5036	1,208.0	50.0	13.3	66.6%	67.0%
HHB	5037	1,967.0	80.0	8.7	43.6%	54.8%
HHB	5045	2,730.0	112.0	15.2	76.0%	80.2%
HHS	190	2,024.0	187.0	17.0	85.0%	82.3%
HHS	195	2,254.0	187.0	17.0	85.0%	66.8%
HHS	220	550.0	40.0	8.0	40.0%	45.0%
HHS	225	414.0	30.0	6.0	30.0%	56.7%
NFH	156	1,980.0	144.0	9.0	45.0%	84.9%
ODH	202A	1,344.0	83.0	11.5	57.3%	66.3%
ODH	202B	1,848.0	111.0	13.0	65.0%	53.7%
ODH	202C	1,394.0	83.0	5.0	25.0%	65.8%
PH	302	1,711.0	72.0	13.9	69.7%	53.0%
PH	306	957.0	48.0	12.3	61.4%	58.1%
PH	307	925.0	49.0	13.0	65.0%	53.2%
PH	308	928.0	48.0	3.8	18.8%	54.2%
PH	309	925.0	49.0	13.0	65.0%	51.2%
PH	310	754.0	36.0	11.3	56.4%	49.1%
PH	312	725.0	36.0	10.5	52.7%	44.7%
PH	314	1,248.0	48.0	13.0	65.0%	51.6%
PH	316	957.0	48.0	9.0	45.0%	66.7%
PH	318	928.0	48.0	12.5	62.5%	46.8%
PH	320	754.0	36.0	11.9	59.3%	59.3%
SEB	93	570.0	35.0	4.7	23.4%	51.5%
SEB	130	630.0	42.0	12.0	60.0%	67.9%
SEB	164	1,134.0	70.0	12.0	60.0%	70.8%
SEB	168	1,107.0	70.0	10.0	50.0%	48.9%
SEB	172	1,134.0	70.0	12.0	60.0%	55.4%
SEB	185	840.0	50.0	15.9	79.7%	64.0%
SEB	187	540.0	36.0	7.0	35.0%	56.7%
SEB	364	400.0	26.0	9.0	45.0%	60.7%
SEB	372	960.0	50.0	0.0	0.0%	0.0%
SEB	376	600.0	28.0	7.0	35.0%	73.5%
SEB	378	600.0	30.0	8.0	40.0%	71.7%
SEB	384	660.0	44.0	17.0	85.0%	56.6%
SEB	386	600.0	40.0	16.0	80.0%	41.9%
SEB	388	600.0	30.0	10.0	50.0%	30.3%
SFH	163	816.0	63.0	12.0	60.0%	70.2%
SFH	164	644.0	48.0	11.7	58.3%	41.1%
SFH	165	945.0	63.0	4.0	20.0%	92.1%
SFH	166	644.0	48.0	6.0	30.0%	49.3%
SFH	167	644.0	48.0	15.0	75.0%	49.7%
SFH	168	644.0	48.0	15.7	78.4%	53.5%
SFH	169	644.0	40.0	9.0	45.0%	53.3%
SFH	170	644.0	48.0	17.0	85.0%	41.3%
SFH	171	644.0	30.0	17.0	85.0%	53.3%
SFH	172	644.0	48.0	13.0	65.0%	40.9%
SFH	173	644.0	48.0	12.3	61.7%	66.5%
SFH	174	644.0	48.0	17.0	85.0%	49.0%

Building	Room	ASF	Capacity	WRH	WRH%	Station Occupancy
SFH	176	702.0	48.0	6.0	30.0%	35.4%
SFH	263	980.0	65.0	5.0	25.0%	64.3%
SFH	265	420.0	25.0	9.0	45.0%	41.8%
SFH	266	644.0	48.0	7.9	39.7%	70.5%
SFH	268	644.0	48.0	9.0	45.0%	43.5%
SFH	269	644.0	48.0	17.0	85.0%	68.9%
SFH	270	644.0	48.0	7.3	36.7%	26.2%
SFH	271	644.0	48.0	17.0	85.0%	70.2%
SFH	272	644.0	48.0	11.3	56.7%	41.4%
SFH	273	644.0	48.0	9.0	45.0%	40.3%
SFH	274	644.0	48.0	17.0	85.0%	43.9%
SFH	276	728.0	48.0	13.0	65.0%	44.6%
SFH	363	980.0	70.0	9.0	45.0%	50.3%
SFH	364	644.0	48.0	10.3	51.7%	39.7%
SFH	365	980.0	75.0	9.0	45.0%	50.1%
SFH	366	644.0	48.0	10.5	52.5%	39.0%
SFH	367	644.0	48.0	8.0	40.0%	38.0%
SFH	368	644.0	48.0	12.3	61.7%	31.3%
SFH	369	644.0	48.0	12.3	61.7%	48.9%
SFH	370	644.0	48.0	17.0	85.0%	33.2%
SFH	371	644.0	48.0	12.3	61.7%	44.3%
SFH	372	644.0	48.0	8.3	41.7%	58.3%
SFH	373	644.0	48.0	11.0	55.1%	48.7%
SFH	374	644.0	48.0	8.3	41.7%	33.6%
SFH	376	728.0	48.0	12.0	60.1%	37.7%
VAR	205	1,064.0	85.0	13.0	65.0%	59.9%
VAR	206	1,102.0	85.0	15.0	75.0%	56.1%
VAR	479	966.0	30.0	15.0	75.1%	73.3%
WH	102	810.0	60.0	13.0	65.0%	65.4%
WH	105	783.0	60.0	6.0	30.0%	60.0%
WH	124	529.0	85.0	9.0	45.0%	52.2%
WH	301	300.0	16.0	5.0	25.0%	40.0%
WH	313	480.0	30.0	9.0	45.0%	47.0%
Totals	106	102,015	6,211	1,134.5		
Averages		962	59	10.7	53.5%	58.1%

## Report 11 – Winter 2014

- Evening Utilization 5 pm to 10 pm
- 25 Available Hours per Week

Building	Room	ASF	Capacity	WRH	WRH%	Station Occupancy
DHE	200	812	95	17.0	68.0%	27.2%
DHE	201	3,596	314	4.0	16.0%	23.8%
DHE	202	648	52	12.0	48.0%	35.3%
DHE	203	918	70	5.0	20.0%	22.0%
DHE	204	638	30	12.0	48.0%	21.1%
DHE	236	380	30	13.0	52.0%	18.7%
DHE	237	380	30	12.0	48.0%	34.4%
EH	204	570	30	13.7	54.8%	77.2%
EH	206	570	30	15.3	61.2%	55.3%
EH	208	720	40	12.2	48.8%	64.4%
EH	210	720	45	12.2	48.8%	57.2%
EH	212	720	40	13.7	54.8%	72.6%
EH	214	837	48	12.7	50.8%	34.9%
EH	235	1,054	40	15.9	63.7%	60.7%
EH	237	1,054	40	16.5	65.9%	49.6%
EH	239	1,054	40	14.2	56.8%	73.6%
HHB	1005	1,828	80	11.6	46.2%	49.5%
HHB	1006	1,563	50	10.1	40.4%	71.6%
HHB	1031	729	30	5.1	20.2%	26.7%

Building	Room	ASF	Capacity	WRH	WRH%	Station Occupancy
HHB	1050	4,384	200	11.7	46.6%	48.0%
HHB	2023	1,442	50	14.6	58.6%	69.0%
HHB	2085	1,213	55	6.1	24.2%	51.7%
HHB	2086	1,307	60	9.6	38.2%	40.3%
HHB	4043	1,938	80	8.4	33.7%	32.3%
HHB	4050	2,695	112	10.6	42.6%	69.3%
HHB	5036	1,208	50	13.1	52.4%	68.9%
HHB	5037	1,967	80	11.6	46.2%	41.7%
HHB	5045	2,730	112	7.7	30.7%	37.3%
HHS	190	2,024	187	5.0	20.0%	42.2%
HHS	195	2,254	187	9.0	36.0%	45.1%
HHS	220	550	40	12.0	48.0%	38.3%
HHS	225	414	30	15.8	63.1%	31.2%
NFH	156	1,980	144	8.1	32.4%	35.2%
ODH	202A	1,344	83	8.0	32.0%	62.0%
ODH	202B	1,848	111	8.1	32.4%	55.8%
ODH	202C	1,394	83	14.2	56.8%	35.1%
PH	302	1,711	72	15.2	60.8%	30.3%
PH	306	957	48	10.6	42.6%	53.5%
PH	307	925	49	10.6	42.6%	15.6%
PH	308	928	48	10.6	42.6%	45.1%
PH	309	925	49	15.2	60.8%	50.6%
PH	310	754	36	15.2	60.8%	65.2%
PH	312	725	36	14.2	56.8%	44.4%
PH	314	1,248	48	13.4	53.5%	31.5%
PH	316	957	48	14.2	56.8%	31.8%
PH	318	928	48	15.2	60.8%	35.1%
PH	320	754	36	14.2	56.8%	41.7%
SEB	93	570	35	11.6	46.2%	24.5%
SEB	130	630	42	11.0	44.0%	54.1%
SEB	164	1,134	70	18.0	72.0%	47.9%
SEB	168	1,107	70	18.0	72.0%	34.9%
SEB	172	1,134	70	13.2	52.9%	27.2%
SEB	185	840	50	13.0	52.0%	24.2%
SEB	187	540	36	17.0	68.0%	44.0%
SEB	364	400	26	5.0	20.0%	21.5%
SEB	372	960	50	12.0	48.0%	64.7%
SEB	376	600	28	17.0	68.0%	32.8%
SEB	378	600	30	18.0	72.0%	51.1%
SEB	384	660	44	16.0	64.0%	18.2%
SEB	386	600	40	14.0	56.0%	25.4%
SEB	388	600	30	11.0	44.2%	38.1%
SFH	163	816	63	11.2	44.6%	41.2%
SFH	164	644	48	14.7	58.8%	41.8%
SFH	165	945	63	7.1	28.4%	57.1%
SFH	166	644	48	13.7	54.8%	52.5%
SFH	167	644	48	12.2	48.6%	61.8%
SFH	168	644	48	15.2	60.8%	48.8%
SFH	169	644	40	15.2	60.8%	57.2%
SFH	170	644	48	12.6	50.6%	48.2%
SFH	171	644	30	12.1	48.4%	60.2%
SFH	172	644	48	7.1	28.2%	44.4%
SFH	173	644	48	12.2	48.6%	54.4%
SFH	174	644	48	10.1	40.6%	57.2%
SFH	176	702	48	7.1	28.4%	61.5%
SFH	263	980	65	15.1	60.4%	74.6%
SFH	265	420	25	6.8	27.1%	50.1%
SFH	266	644	48	11.2	44.8%	40.8%
SFH	268	644	48	13.7	54.8%	63.7%
SFH	269	644	48	14.7	58.8%	48.2%
SFH	270	644	48	16.7	66.7%	47.8%
SFH	271	644	48	16.1	64.4%	40.7%

Building	Room	ASF	Capacity	WRH	WRH%	Station Occupancy
SFH	272	644	48	7.6	30.2%	53.7%
SFH	273	644	48	11.7	46.6%	37.4%
SFH	274	644	48	13.7	54.8%	54.5%
SFH	276	728	48	14.7	58.8%	48.7%
SFH	363	980	70	16.1	64.4%	72.6%
SFH	364	644	48	15.1	60.4%	20.5%
SFH	365	980	75	9.1	36.6%	39.1%
SFH	366	644	48	14.2	56.8%	57.8%
SFH	367	644	48	6.6	26.4%	58.8%
SFH	368	644	48	6.6	26.4%	74.5%
SFH	369	644	48	10.6	42.6%	50.0%
SFH	370	644	48	14.7	58.8%	56.6%
SFH	371	644	48	11.6	46.2%	34.8%
SFH	372	644	48	12.1	48.4%	60.6%
SFH	373	644	48	12.1	48.4%	43.9%
SFH	374	644	48	11.6	46.4%	52.7%
SFH	376	728	48	15.1	60.4%	42.6%
VAR	205	1,064	85	14.2	56.8%	42.1%
VAR	206	1,102	85	16.2	64.8%	45.0%
VAR	479	966	30	15.2	60.8%	67.1%
WH	102	810	60	8.1	32.4%	58.5%
WH	105	783	60	7.1	28.4%	67.5%
WH	124	529	85	6.6	26.4%	36.4%
WH	301	300	16	11.7	46.6%	57.4%
WH	313	480	30	10.8	43.3%	54.1%
Totals	106	102,015	6,211	1,282.8		
Averages		962	59	12.1	48.4%	43.3%

## Report 12 – Winter 2014

- Saturday Utilization 8 am to 5 pm
- 9 Available Hours per Week

Building	Room	ASF	Capacity	WRH	WRH%	Station Occupancy
DHE	236	380.0	30.0	3.72	41.3%	26.7%
EH	235	1,054.0	40.0	4.05	45.0%	72.5%
EH	237	1,054.0	40.0	7.27	80.8%	32.5%
EH	239	1,054.0	40.0	8.72	96.9%	10.0%
PH	306	957.0	48.0	5.22	58.0%	27.1%
PH	309	925.0	49.0	3.55	39.4%	14.3%
PH	312	725.0	36.0	3.55	39.4%	33.3%
PH	320	754.0	36.0	6.22	69.1%	41.7%
SEB	130	630.0	42.0	3.72	41.3%	23.8%
SEB	164	1,134.0	70.0	2.22	24.7%	77.1%
SEB	168	1,107.0	70.0	3.22	35.8%	45.7%
SEB	185	840.0	50.0	2.22	24.7%	86.0%
SEB	378	600.0	30.0	3.72	41.3%	10.0%
SFH	367	644.0	48.0	1.00	11.1%	45.8%
WH	313	480.0	30.0	7.22	80.2%	65.4%
Totals	15	12,338	659	66		
Averages		823	44	4.4	48.6%	35.9%

# FACILITY CONDITION ASSESSMENT

## PLANT RENEWAL, DEFERRED PLANT RENEWAL & PLANT ADAPTATION BACKLOG

The Facilities management computerized Capital Asset Management (CAM) program is a relational database management system, containing over 1,500 projects; totaling over \$207 million. In addition to this summary report, the database is capable of producing ad-hoc reports by priority rank, building system, completed and In-process projects in the current fiscal year, and backlog category.

The objective with this document, in addition to identifying our needs, is to raise awareness of the deferred plant renewal liability, and to serve as a point of departure for broader facilities planning as well as to set priorities. These assessments identified needs, established scope, determined preliminary costs, and prioritized facility projects for the University.

Oakland University completed facility condition assessments in 2006 for 34 campus buildings and updates the assessments of four buildings each year.

### Executive Summary of 2013 & 2014 Year Projects

Million Dollar						
System Code	Projects Category	2013 Projects Total	Complete d Projects	In- Process Projects	New Projects added	2014 Projects Backlog
AC	Accessibility	\$ 3.03	\$ -	\$ 0.04	\$ 0.17	\$ 3.15
EL	Electrical	\$ 14.45	\$ 0.31	\$ 0.38	\$ 1.26	\$ 15.02
EN	Energy	\$ 3.93	\$ 0.15	\$ 0.46	\$ 0.79	\$ 4.12
ES	Exterior System	\$ 17.59	\$ 5.61	\$ 1.18	\$ 4.81	\$ 15.61
FS	Fire/Life Safety	\$ 18.46	\$ 0.63	\$ -	\$ 0.96	\$ 18.78
HE	Health	\$ 1.14	\$ 0.06	\$ 0.05	\$ (0.15)	\$ 0.88
HT	High Temp / Hot Water	\$ 12.17	\$ 0.09	\$ 0.42	\$ 1.22	\$ 12.88
HV	HVAC	\$ 38.26	\$ 1.25	\$ 1.48	\$ 3.10	\$ 38.63
IS	Interior System	\$ 27.51	\$ 4.58	\$ 4.29	\$ 10.06	\$ 28.70
IT	Information Technology	\$ 22.08	\$ 2.09	\$ 2.78	\$ 5.48	\$ 22.69
PL	Plumbing	\$ 19.11	\$ 0.13	\$ 3.31	\$ (0.35)	\$ 15.32
RW	Roads / Walks / Parking Lots	\$ 3.06	\$ 4.15	\$ 0.21	\$ 4.44	\$ 3.14
SI	Site	\$ 17.43	\$ 5.34	\$ 1.11	\$ 10.34	\$ 21.32
SS	Security Systems	\$ 0.04	\$ 0.34	\$ 1.05	\$ 2.27	\$ 0.93
VT	Elevator	\$ 3.64	\$ 0.62	\$ 0.06	\$ 0.51	\$ 3.46
	<b>Total</b>	<b>\$ 201.90</b>	<b>\$ 25.36</b>	<b>\$ 16.81</b>	<b>\$ 44.91</b>	<b>\$ 204.64</b>
	<b>NET CHANGE FROM PREVIOUS YEAR</b>					<b>\$ 2.74</b>

Note 1: Projects were eliminated as a result of non-validity and/or duplication.

Remarks: Facility Management continually checks the validity of projects in the database and eliminates projects that are not viable. The total net change for the project backlog (\$2.74) is mainly due to inflation.

### DEFINITIONS

Capital Asset Management is a systematic approach to renewing the University's capital assets through planned:

## **Plant Renewal**

### **Deferred Plant Renewal**

### **Plant Adaptation**

These terms have been formally defined by the National Association of College and University Business Officers (NACUBO) as follows:

#### **Plant Renewal**

“...a systematic approach to planning and budgeting for known future cyclical renewal and replacement requirements that extend the (present) life and retain the usable condition of campus facilities and (building) systems ... not normally contained in the annual operating budget. ...” (NACUBO) Cyclical renewals typically exceed five year cycles and include such items as roof replacement, electrical switchgear, and HVAC system replacement. These expenditures keep the physical plant and related infrastructure in reliable operating condition for its present use.

#### **Deferred Plant Renewal**

“... encompasses measures that are not carried out because of underfunding in the budgeting process or perceived low priority...” (NACUBO) This includes actual projects, from the prior or current years, not included in the routine maintenance work. These projects represent “Postponed Work” that was deferred because total costs exceed current budget, or projects that are of a “low priority” that present a minimal return on investment. Also included in the Deferred Plant Renewal project list are those projects that were shifted because funds were re-allocated to address emergencies that have no other funding source.

#### **Plant Adaptation**

“...improvements are driven by institutional program changes ...” (NACUBO) This involves a programmatic process to plan and fund for projects that will be required due to an evolving use of the institution (e.g., changes in academic disciplines, shifting expectations, supporting institutional mission, etc.), or changing standards (e.g., campus master plans, architectural standards, etc.). These expenditures are over and above normal maintenance, and are not typically contained in the annual operating budget.

## FACILITY CONDITION ASSESMENT RANKING

### **PRIORITY 1**

#### **Current Critical (immediate or current year)**

Projects in this category require immediate action to:

- Return a facility to normal operation
- Stop accelerated deterioration
- Correct a cited safety hazard

### **PRIORITY 2**

#### **Potentially Critical (within one year)**

Projects in this category, if not corrected expeditiously, will become critical within a year. Situations in this category include:

- Intermittent interruptions
- Rapid deterioration
- Potential safety hazard

### **PRIORITY 3**

#### **Necessary – Not Yet Critical (within years two – five)**

Projects in this category include conditions requiring prompt attention to preclude predictable deterioration or potential down time and associated higher costs if deferred further.

### **PRIORITY 4**

#### **Recommended (within years six – ten)**

Projects in this category include items that represent a sensible improvement to existing conditions. These are not required for the most basic function of a facility; however, Priority 4 projects will either improve overall usability and/or reduce long-term maintenance.

### **PRIORITY 5**

#### **Recommended (beyond year ten)**

Projects in this category may not improve overall usability and/or reduce long-term maintenance; however, they provide an economic payback that would not otherwise be present. Projects in this category may represent to upgrade buildings with current codes during major renovation projects. Projects in this category may also represent non-time based improvement, upgrade, or recommendation.

SOURCE: Association of Higher Education Facilities Officers (APPA)



## ABBREVIATIONS

CAMPUS SYSTEM - Accessibility (AC)  
 Electrical (EL)  
 Energy Management (EN)  
 Exterior Structure (ES)  
 Fire/Life Safety (FS)  
 Health (HE)  
 High Temperature / Heat Water (HT)  
 HVAC (HV)  
 Information Technology (IT)  
 Interior / Finish System (IS)  
 Plumbing (PL)  
 Roads, Walks, Parking Lots (RW)  
 Site (SI)  
 Vertical Transportation (VT)  
 Security Systems (SS)

CATEGORY - Plant Renewal (PR)  
 Deferred Plant Renewal (DPR)  
 Plant Adaptation (PA)

**FACILITIES CONDITION NEEDS INDEX (FCNI)** Facility Condition Needs Index provides a relative measure for comparing one building (or group of buildings) to another. The index is a simple calculation, derived by dividing the total project costs (for the ten-year window) by the total facility replacement cost (FRC). When applying the index as an evaluation tool, the lower the number, the better the facility condition. It should also be noted that this is an index, not a percentage. It can (and often does in the case of historic facilities) exceed 1.00.

**Facility Condition Needs Index**

Individual Building FCNI Range	Condition Description
0.01 – 0.05	Excellent condition, typically new construction
0.06 – 0.15	Good condition, renovations occur on schedule
0.16 – 0.30	Fair condition, in need of normal renovation
0.31 – 0.40	Below average condition, major renovation required
0.41 – 0.59	Poor condition, gut / renovation indicated
0.60 and above	Complete facility replacement indicated

**FACILITIES REPLACEMENT COST (FRC)** is reported as the total replacement cost for the building or structure and its contents or fixed assets. As an example, the FRC for student housing includes the replacement cost for the building and all the fixtures within each room. Likewise, the FRC for a central heating plant would include the cost of the structure and the boilers, generators and other equipment contained within.

**Executive Summary**  
**All Campus Buildings – Facility Condition Assessment**

Nos.	Building Code	Building Name	Usage	Year Built	Square Feet	Facility Replacement Cost	Project Costs	FCNI Total	Benchmark per APPA
1	ANI	Anibal House	HS	1962	20,487	\$3,984,650	\$1,281,140	0.32	Below Average
2	AVN	Ann V. Nicholson Apartments	HS	1998	181,291	\$22,314,253	\$1,101,188	0.05	Excellent
3	BB	Belgian Barn	AUX	1935	9,324	\$723,970	\$229,024	0.32	Below Average
4	BRS	Biomedical Research Support Facility	UNIV	1999	14,300	\$5,156,358	\$870,609	0.17	Fair Condition
5	BGM	Building Grounds and Maintenance Bldg	UNIV	1994	14,400	\$1,394,701	\$548,402	0.39	Below Average
6	CHP	Central Heating Plant	UNIV	1974	16,833	\$24,278,875	\$4,843,845	0.20	Fair Condition
7	CCC	Chicken Coop Center	AUX	1930*	8,404	\$735,571	\$207,825	0.28	Fair Condition
8	CAS	College of Arts & Science Annex	AD	1987	4,084	\$297,215	\$307,337	1.03	Full Replacement
9	DHE	Dodge Hall of Engineering	AD	1968	151,204	\$45,060,756	\$15,869,309	0.35	Below Average
10	ECMB	East Campus & Misc. Buildings	AUX	N/A	89,294	\$21,465,355	\$1,451,376	0.07	N/A
11	EH	Elliott Hall	AD	2000	74,582	\$16,021,103	\$2,511,896	0.16	Fair Condition
12	ET	Elliott Tower	UNIV	2014	950	\$6,500,000	\$10	0.00	Excellent
13	EC	Engineering Center	AD	2014	134,286	\$74,551,739	\$10	0.00	Excellent
14	FM	Facilities Management	UNIV	2014	7,800	\$1,750,000	\$10	0.00	Excellent
15	FTZ	Fitzgerald House	HS	1961	20,610	\$4,008,572	\$1,233,144	0.31	Below Average
16	GAT	Gatehouse at MBH	UNIV	1929*	2,032	\$936,667	\$310,257	0.33	Below Average
17	GTM	George T. Matthews Apartments	HS	1982	47,464	\$7,602,878	\$1,767,049	0.23	Fair Condition
18	GLC	Golf & Learning Center	AUX	1914*	6,038	\$1,088,605	\$242,848	0.22	Fair Condition
19	GLF	Golf Courses	AUX	N/A	-	\$24,038,966	\$8,346,821	0.35	Below Average
20	GP	Golf Pavilion	AUX	2014	5,450	\$1,300,000	\$6,000	0.00	Excellent
21	GHC	Graham Health Center	UNIV	1970	13,161	\$2,206,209	\$895,620	0.41	Poor Condition
22	GRN	Greenhouse	UNIV	1917*	3,630	\$654,461	\$789,725	1.21	Replacement
23	HAM	Hamlin Hall	HS	1968	143,872	\$34,902,323	\$5,591,419	0.16	Fair Condition
24	HHS	Hannah Hall of Science	AD	1961	89,418	\$40,929,986	\$15,345,031	0.37	Below Average
25	HIL	Hill House	HS	1964	42,522	\$10,315,535	\$3,249,302	0.31	Below Average
26	HHB	Human Health Building	AD	2012	172,825	\$68,417,267	\$21,051	0.00	Excellent
27	JDH	John Dodge House	UNIV	1880*	10,696	\$1,939,091	\$615,130	0.32	Below Average
28	KL	Kresge Library	AD	1961	164,522	\$29,213,526	\$2,589,027	0.09	Good Condition
29	MC	Main Campus	UNIV	N/A	-	\$120,194,831	\$29,561,646	0.24	Fair Condition
30	MCMB	Main Campus Misc. Buildings	AUX	1960	18,429	\$4,430,141	\$349,764	0.08	Good Condition
31	MBH	Meadow Brook Hall	AUX	1929*	78,002	\$48,077,933	\$9,487,818	0.20	Fair Condition
32	NFH	North Foundation Hall	AD	1959	67,691	\$24,514,239	\$5,792,043	0.24	Fair Condition
33	OUInc.1	O.U. INCubator Office	UNIV	1983	11,385	\$1,936,768	\$438,491	0.23	Fair Condition
34	OUInc.2	O.U. INCubator Shotwell Gustafson Pavilion	AUX	1929*	25,850	\$4,660,555	\$888,767	0.19	Fair Condition
35	OVH	Oak View Hill	HS	2014	164,724	\$29,950,000	\$10	0.00	Excellent
36	OC	Oakland Center	AUX	1959	146,693	\$25,602,582	\$6,333,313	0.25	Fair Condition
37	ODH	ODowd Hall	AD	1982	105,000	\$39,953,726	\$8,677,534	0.22	Fair Condition
38	OIT	O'Dowd Hall IT Network Building	UNIV	2011	822	\$2,176,722	\$10	0.00	Excellent
39	P32	Parking Structure	UNIV	2014	381,782	\$22,831,000	\$10	0.00	Excellent
40	PS1	Parking Structure	UNIV	2002	179,820	\$10,993,019	\$66,773	0.01	Excellent
41	PH	Pawley Hall	AD	2002	132,406	\$31,167,229	\$4,887,511	0.16	Fair Condition
42	PSS	Police and Support Services	UNIV	1976	26,444	\$4,535,682	\$1,142,577	0.25	Fair Condition
43	PRY	Pryale Hall	HS	1963	20,829	\$4,138,208	\$1,630,839	0.39	Below Average
44	SEB	Science and Engineering Building	AD	1997	165,494	\$56,125,182	\$5,908,052	0.11	Good Condition
45	SFH	South Foundation Hall	AD	1959	55,041	\$10,935,289	\$4,047,364	0.37	Below Average

## Executive Summary

### All Campus Buildings – Facility Condition Assessment

46	SS	Spenser Substation	UNIV	2003	14,769	\$2,662,736	\$119,968	0.05	Excellent
47	SSC	Steve Sharf Clubhouse	AUX	2011	9,900	\$3,684,007	\$30,771	0.01	Excellent
48	SRAC	Student Recreation and Athletic Center	AUX	1998	253494	\$45,326,702	\$2,850,815	0.06	Good Condition
49	SST	Sunset Terrace	HS	1952*	12,587	\$2,735,169	\$451,498	0.17	Fair Condition
50	UF	Upper Fields	UNIV	2014	950	\$7,850,000	\$10	0.00	Excellent
51	VWH	Van Wagner House	HS	1965	43,305	\$10,505,485	\$2,746,242	0.26	Fair Condition
52	VBH	Vandenberg Hall	HS	1967	178,321	\$43,259,406	\$16,878,453	0.39	Below Average
53	VAR	Varner Hall	AD	1970	119,939	\$37,232,687	\$13,564,238	0.36	Below Average
54	WH	Wilson Hall and Meadow Brook Theatre	AD	1967	98,153	\$37,496,207	\$18,561,746	0.50	Poor Condition
		Grand Totals:		Fair	3,761,309	\$1,084,764,137	\$204,640,668	0.19	Fair

NOTE: FRC exclude furnishing and furniture cost.

\* - Historical Building

Total Cost Per Square Foot for all campus physical Assets	\$288.40
---	----------

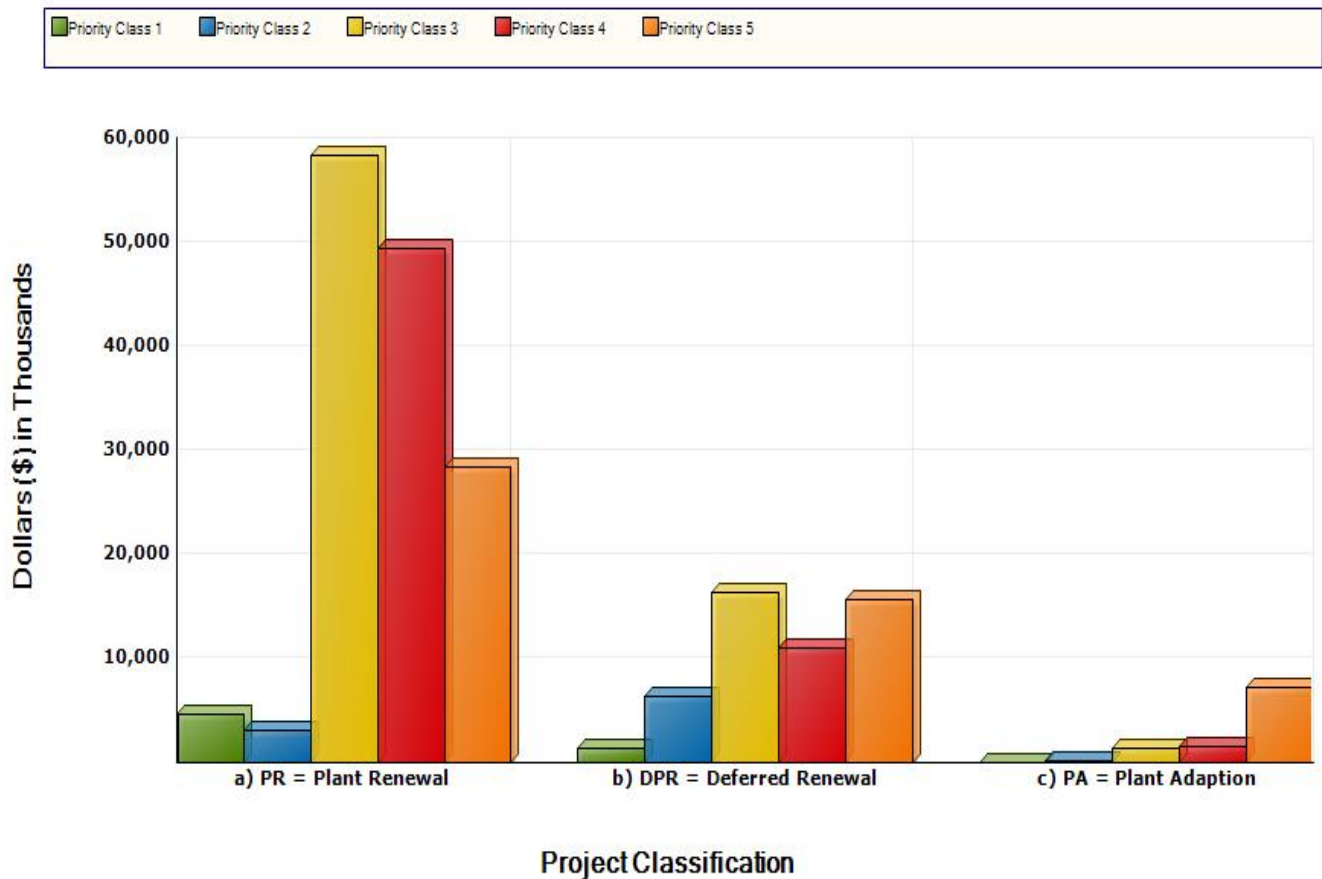
Total Cost Per Square Foot for all campus Projects	54.41
--	-------

Individual Building FCNI Range	Condition Description
0.01 – 0.05	Excellent condition, typically new construction
0.06 – 0.15	Good condition, renovations occur on schedule
0.16 – 0.30	Fair condition, in need of normal renovation
0.31 – 0.40	Below average condition, major renovation required
0.41 – 0.59	Poor condition, gut / renovation indicated
0.60 and above	Complete facility replacement indicated

**Detailed Project Summary  
Facility Condition Analysis  
Project Class by Priority Class**

Project Class	Priority Classes					
	1	2	3	4	5	Subtotal
a) PR = Plant Renewal	4,577,407	3,070,574	58,305,083	49,304,532	28,291,890	143,549,486
b) DPR = Deferred Renewal	1,339,999	6,409,094	16,320,847	11,010,569	15,663,425	50,743,934
c) PA = Plant Adaption	6,010	115,000	1,320,136	1,617,924	7,288,178	10,347,248
<b>TOTALS</b>	<b>\$5,923,416</b>	<b>\$9,594,668</b>	<b>\$75,946,066</b>	<b>\$61,933,025</b>	<b>\$51,243,493</b>	<b>\$204,640,668</b>

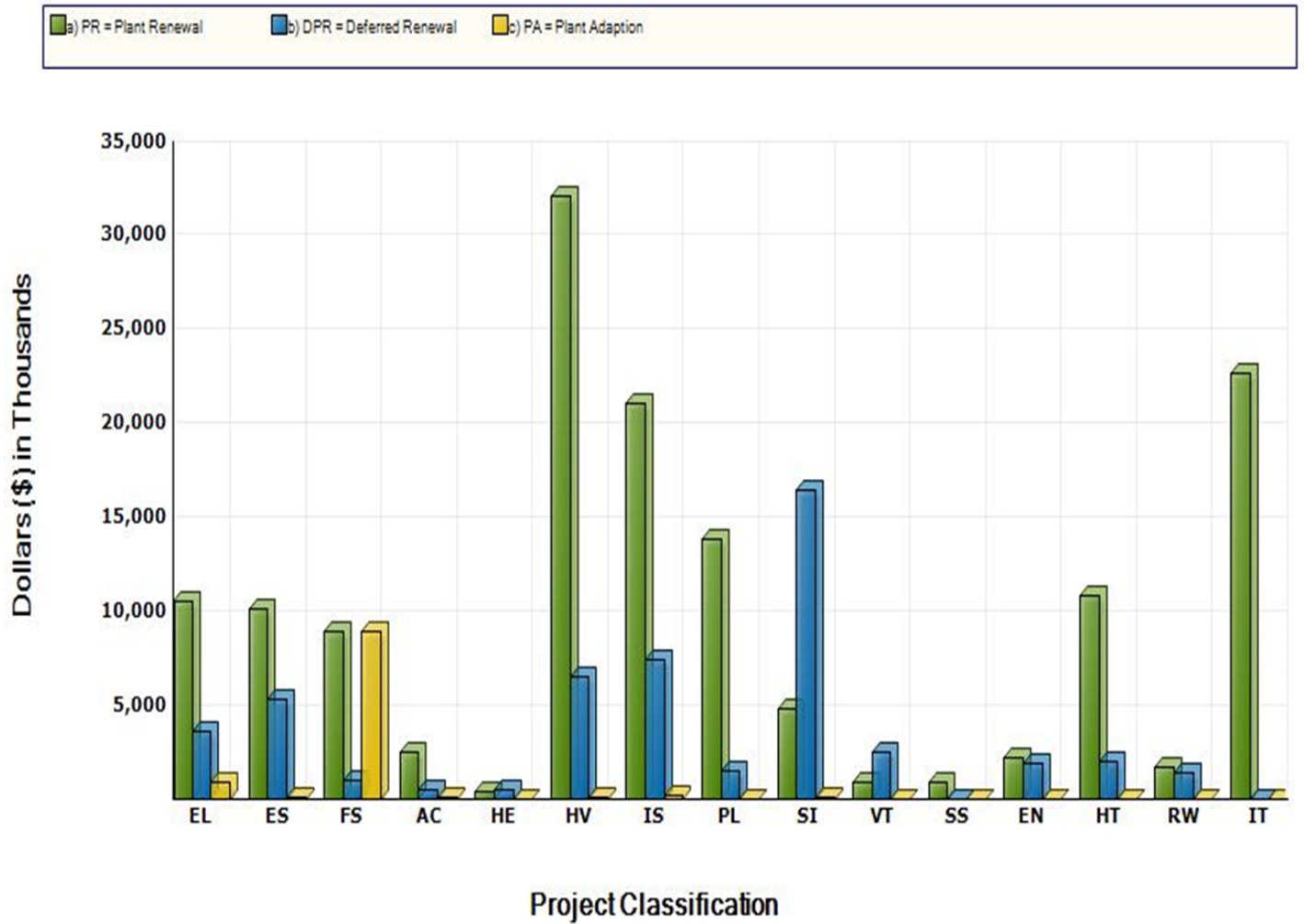
**FACILITY CONDITION ANALYSIS  
Project Class by Priority Class  
All Assets**



Detailed Project Totals  
Facility Condition Analysis  
System Code by Project Class  
All Assets

System Description	Project Classes				%
	a) PR = Plant Renewal	b) DPR = Deferred Renewal	c) PA = Plant Adaption	Subtotal	
AC ACCESSIBILITY	2,535,486	512,261	102,730	3,150,476	1.54%
EL ELECTRICAL	10,501,338	3,659,604	858,350	15,019,292	7.34%
EN ENERGY	2,213,393	1,898,407	6000	4,117,800	2.01%
ES EXTERIOR	10,149,991	5,344,445	119,849	15,614,285	7.63%
FS FIRE/LIFE SAFETY	8,887,245	987,376	8,910,309	18,784,930	9.18%
HE HEALTH	423,276	455,538	0	878,813	0.43%
HT HIGH TEMP/HEAT WATER	10,847,434	2,036,950	0	12,884,384	6.30%
HV HVAC	32,052,652	6,486,074	90,000	38,628,726	18.88%
IS INTERIOR/FINISH SYS.	21,081,762	7,435,506	185,000	28,702,267	14.03%
IT INFORMATION TECHNOLOGY	22,688,052	0	0	22,688,052	11.09%
PL PLUMBING	13,805,821	1,515,799	0	15,321,619	7.49%
RW ROAD/WALKS/PARKING LOT	1,729,848	1,410,932	0	3,140,782	1.53%
SI SITE	4,795,754	16,450,311	75,010	21,321,075	10.42%
SS SECURITY SYSTEMS	925,800	0	0	925,800	0.45%
VT VERT. TRANSPORTATION	911,635	2,550,731	0	3,462,367	1.69%
TOTALS	\$143,549,487	\$50,743,934	\$10,347,248	\$204,640,668	100.0%

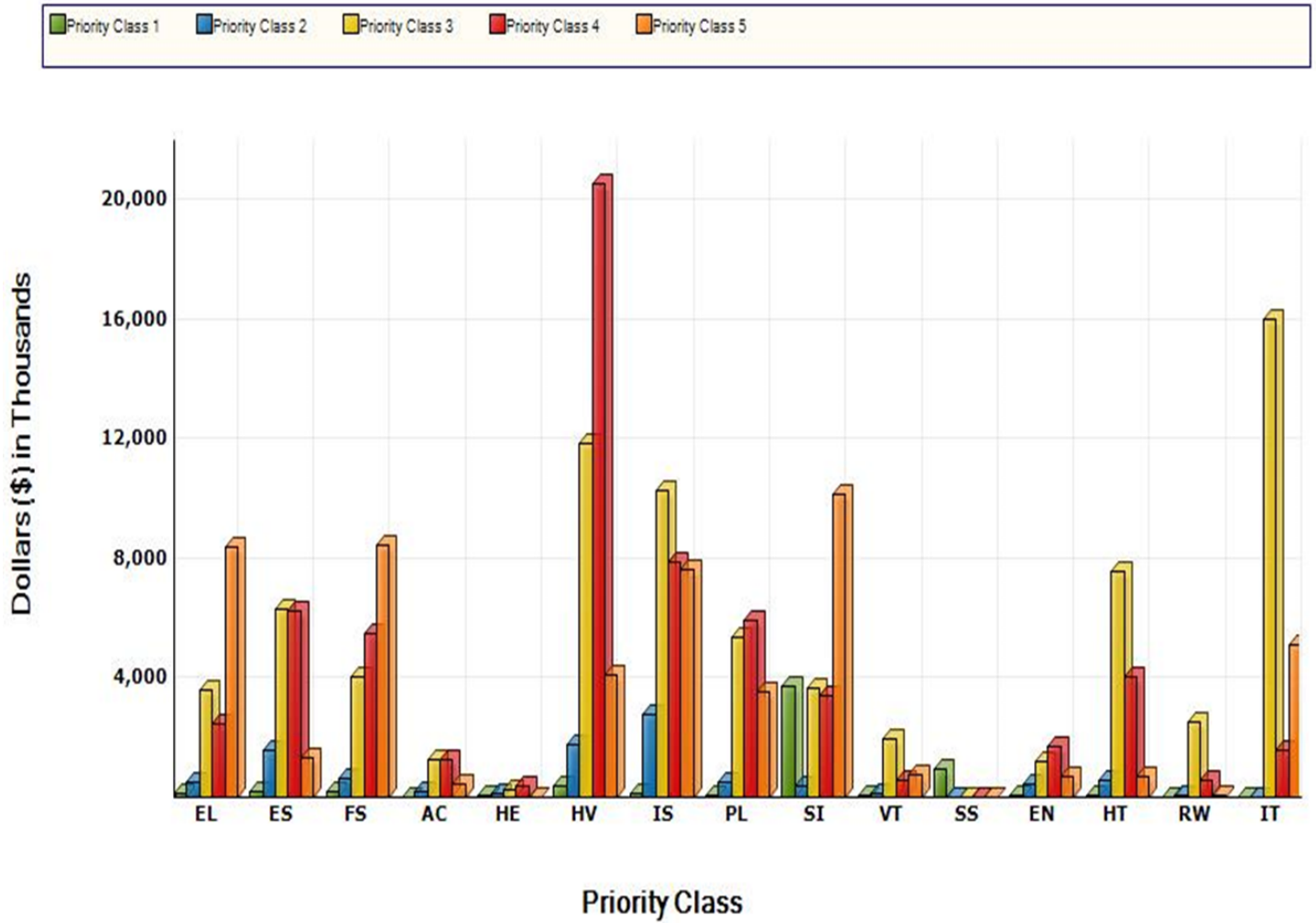
# **FACILITY CONDITION ANALYSIS** **System Code by Project Code** **All Assets**



Detailed Project Totals  
Facility Condition Analysis  
System Code by Priority Class  
All Assets

System Description	Priority Classes					
	1	2	3	4	5	Subtotal
	FY 15	FY 16	FY 17-20	FY 21-24	FY 25+	
AC ACCESSIBILITY	30,014	160,383	1,272,155	1,245,370	442,554	3,150,476
EL ELECTRICAL	100,066	476,362	3,616,681	2,442,420	8,383,763	15,019,292
EN ENERGY	48,356	467,254	1,220,436	1,688,066	693,688	4,117,800
ES EXTERIOR	190,068	1,551,629	6,335,280	6,227,043	1,310,266	15,614,286
FS FIRE/LIFE SAFETY	172,523	656,742	4,007,797	5,502,704	8,445,165	18,784,931
HE HEALTH	47,453	111,670	281,617	406,601	31,472	878,813
HT HIGH TEMP/HEAT WATER	36,625	562,405	7,572,665	4,047,120	665,569	12,884,384
HV HVAC	356,537	1,758,920	11,878,030	20,533,583	4,101,656	38,628,726
IS INTERIOR/FINISH SYS.	144,380	2,773,369	10,278,399	7,900,291	7,605,828	28,702,267
IT INFORMATION TECHNOLOGY	0	0	16,036,235	1,554,889	5,096,927	22,688,051
PL PLUMBING	72,372	507,922	5,330,501	5,909,052	3,501,772	15,321,619
RW ROAD/WALKS/PARKING LOT	0	46,665	2,494,482	557,771	41,863	3,140,781
SI SITE	3,747,938	399,363	3,650,825	3,373,935	10,149,015	21,321,076
SS SECURITY SYSTEMS	925,800	0	0	0	0	925,800
VT VERT. TRANSPORTATION	51,285	121,984	1,970,962	544,181	773,954	3,462,366
<b>TOTALS</b>	<b>\$5,923,417</b>	<b>\$9,594,668</b>	<b>\$75,946,065</b>	<b>\$61,933,026</b>	<b>\$51,243,492</b>	<b>\$204,640,668</b>

# FACILITY CONDITION ANALYSIS System Code by Priority Class All Assets





## **V. Implementation Plan**

### **State Funding Request**

In the future, as additional state projects are considered, Oakland University has need for the following based on program growth, opportunity and State needs:

### **Oakland University Varner Hall Expansion**

The proposed Oakland University Varner Hall Expansion is the University's highest priority capital outlay request and is designed to provide state-of-the-art instructional facilities for rapidly growing academic programs in the Social Science disciplines of Psychology, Political Science/Public Administration, History, Sociology, Anthropology, Social Work, and Criminal Justice, as well as the disciplines of Communication/Journalism, Writing and Rhetoric, and Music, Theater, and Dance. The facility will house classrooms, studios, practice rooms, research and computer labs, and faculty and administrative offices. The project will encompass primarily new construction and will be directly attached to the existing Varner Hall, currently the home for many of these departments. The expanded facility will provide technology enabled, discipline specific teaching studios reflecting advanced design that will accommodate students in dozens of majors offered by the numerous departments in the College of Arts and Sciences. The proposed Varner Hall Expansion will total approximately 258,000 gross square feet of new academic space. This represents a 106% total increase in space for the units involved. Additional space is crucial to address the current severe space shortages as well as to sustain the desired growth in enrollment across the College of Arts and Sciences, which produces 62% of the University's student credit hours. The proposed Varner Hall Expansion is designed to accommodate the growth in size and diversity of academic programs that promote the quality of our educational, scholarly, and community outreach activities. The proposed project will provide a focal point for units in the College of Arts and Sciences that serve the region of Southeast Michigan.

### **University Funded Priorities**

#### **Campus Infrastructure (funded)**

All subprojects associated with the infrastructure improvements are complete and operational. They include improvements to the existing high temperature hot water distribution system (completed and operational), the construction of an independent and secure structure that will house information technology hardware (complete and operational), the renovation of O'Dowd Hall's curtain wall system (complete and operational), and the technology and wiring upgrades to O'Dowd Hall (completed and operational).

Further infrastructure improvements include replacement of the plumbing systems in Hamlin Hall South (complete and operational), and Hamlin Hall North (under construction), replacement of the pedestrian bridges in Hill House and Vandenberg Hall (complete and operational), and the North Foundation Hall data center renovation (under construction).

### Oakland University William Beaumont Medical School (OUWB) Renovations (funded)

Ongoing improvements for the Medical School students and faculty include expanded office and study space in O'Dowd Hall, administrative, conference and collections room expansion as well as cosmetic improvements in Kresge Library.

### Undergraduate Student Housing (funded)

Oak View Hall construction is complete and operational. The project consists of 504 additional beds to support the growing demand for on campus student housing. Expanding housing is in keeping with the campus master plan goal of having 3,800 residential students at Oakland University by year 2030.

### Parking Structure (funded)

The new parking structure is complete and operational. The project has added 1,245 additional parking spaces and helps alleviate the increased demand as Oakland University grows.

### Elliott Tower (funded)

The Bell Tower (complete and operational) enhances the campus experience by providing a unique, recognizable structure that is visible from locations on campus and off. It provides needed outdoor gathering space for the campus community.

### North Foundation Admissions Welcome Center (funded)

The Welcome Center project is complete and operational. The renovated space in North Foundation has become the destination hub for student recruitment and retention and serves as the University's front door.

### EC (funded)

Funded by the State and University matching funds as part of the 2012 Capital Outlay, the 128,000 square foot Engineering Center is complete and operational. It provides state-of-the-art instructional, research and development space for the School of Engineering and Computer Science.

### Upper Fields Development (funded)

The Recreation and Athletic Complex is complete and operational and provides tennis courts, soccer fields, track, campus recreation fields, grandstand and support structures for Oakland's Athletic and Campus Recreation programs.

#### Facilities Management Addition (funded)

Construction of the Facilities Management Addition to the Building and Grounds Building is complete and operational. It has consolidated the departments within the Facility Management Organization as well as provided needed space for a more efficient operation.

#### Campus roads and traffic Management Improvements (funded)

Improvements to existing roads and walks and the construction of a new campus roadway and entrance, along with traffic management enhancements (roundabout, and way-finding) are complete and operational.

#### Athletics Dome (funded via a public private partnership)

A 108,000 SF air supported dome is under construction; to be completed in December 2014. The structure and support building will accommodate sports such as soccer, baseball, softball, football, tennis, golf, track and field, cross country, strength and conditioning and is also suitable for athletic performance training. The project will greatly enhance the campus athletic and recreation programs.

#### Oakland University Golf and Learning Center Banquet Facility (funded)

This 6,000 SF facility supports the event needs of the golf course and provides a venue for University events. The construction is complete and the facility is operational.

#### Vandenberg Hall Residential Dining Facility Expansion (funded)

An expansion of the existing dining facility is complete and operational. The project serves the University's on campus residents, including the new Oak View Hall residents.

#### Oakland Center renovations and improvements (funded)

Renovations to the large banquet rooms are complete, and upgrades to the conference rooms and public spaces are ongoing. The Oakland Center serves as the central gathering space for students and these renovations help to keep the facility current.

#### Combined Heating and Power Co-Generation Plant (funded via a public private partnership)

Contract negotiations are ongoing and construction is expected to start in late 2014. The facility when complete is expected to reduce Oakland's energy costs, improve efficiency and power reliability, reduce CO2 emissions, and provide education opportunities for students.

### **Plant Renewal / Deferred Plant Renewal**

As previously noted, Plant Renewal and Deferred Plant Renewal projects total \$197 million of the \$207 million Facility Condition Analysis. The current annual investment into deferred plant renewal and plant renewal is approximately \$1.6 million from General Fund budgets and maintenance endowments; between \$1.5 million and \$5.0 million from Auxiliaries Maintenance Reserves; and \$0.7 million from University Technology Services budgets.