

August 4, 2015

MEMORANDUM

TO: The Oakland University Community

FROM: Laura Schartman, Director
Institutional Research and Assessment

Subject: 'Summer II session' final and summer semester 2015 total enrollment

This memo summarizes the enrollment data for the summer semester: the final count for the summer II (summer) session and the combined enrollment for the full semester.

Both summer sessions this year (summer I & summer II) were up from last year. In total, summer I & II headcount grew by 1.4%. Summer II accounted for most of the growth.

Final 'summer II session' enrollment

The final count for summer II aggregates data pulled at the count date (the end of the refund period) for each part-of-term (PoT) in the second half of the summer 2015 semester. As of the final count date for the parts-of-term in summer II (August 4), 5,083 students were enrolled, up 4% from last year. At 22,030, credits are up 6.2%, while FYES is 759, up about 7% from last year. Table I below shows the breakout of summer 2015 compared to summer 2014.

Table I: Final summer II headcounts, credits and FYES

	Headcount			Credits			FYES*		
	UG	Grad	Total	UG	Grad	Total	UG	Grad	Total
Summer session '15	4,287	796	5,083	19,124	2,906	22,030	633	127	759
Summer session '14	4,083	800	4,883	17,898	2,853	20,751	592	120	712
Difference	204	-4	200	1226	53	1279	41	7	48
% Diff	5.0%	-0.5%	4.1%	6.8%	1.9%	6.2%	6.9%	5.7%	6.7%

* FYES calculations exclude competency exam credits and on-line credits taken by non-resident students.

Undergraduate enrollment is up across headcount, credits and FYES. While graduate headcount is slightly down from last year, credits and FYES are up.

Table II: summer II new student enrollment

	FTIAC	Transfer	Other UG	Total New UG	Master's level	Doctoral Level	Profssnl Devlpmnt	Total New Grad
Summer 2015	5	61	324	390	19	0	39	58
Summer 2014	14	55	271	340	38	1	42	81
Difference	-9	6	53	50	-19	-1	-3	-23
% Diff	-64%	11%	20%	15%	-50%	-100%	-7.1%	-28%

* New Transfers include Second UG Degree Students

**New Other UG includes Post Bachelor, College Guest, and Non-Matriculated students

Relatively few new students enroll in the summer, and most of them tend to be in the 'other undergrad' category, which includes non-degree-seeking students such as guest students from other universities, high school students, and students taking prerequisite courses for graduate or second degree programs. Enrollment of non-degree students is variable from year to year, so it is not unusual for it to be up or down by a substantial percentage.

Total new undergraduate students increased by about 20%, buoyed mostly by 'other' UG students. Total new graduate enrollment finished down by 28%, mostly because new Master's students fell by 50%.

Returning students were strong in summer II. Undergraduate student enrollment was up by 4.1% and returning graduate enrollment was up by 2.6%.

Table III, below, shows the summer II session enrollment by part-of-term. Headcount in this table is duplicated, so students enrolled in more than one PoT in the summer session are counted in each PoT count. Most of the enrollment is in the 8-week part-of-term.

Table III: Summer II parts-of-term

	Headcount			Credits			FYES		
	UG	Grad	Total	UG	Grad	Total	UG	Grad	Total
S02 - 8 weeks	4,206	650	4,856	18,671	2,302	20,973	618	98	716
S07 - 4 weeks	35	146	181	134	585	719	4	28	32
S08 - 4 weeks	0	2	2	0	4	4	0	0	0
S10 - 2 weeks	0	5	5	0	15	15	0	1	1
S11 - 2 weeks	0	0	0	0	0	0	0	0	0
Study Abroad	72	0	72	312	0	312	10	0	10
Competancy	2	0	2	7	0	7	0	0	0
Total	4,315	803	5,118	19,124	2,906	22,030	633	127	759

The whole picture: Total summer I and II 2015 enrollment

The combined total headcount enrollment for summer I & II is up 1.4%, while credits are up 2.9% and FYES 3.4%. Students who enrolled in both summer I and summer II are counted separately in the headcount of each session and will be duplicated in Table IV. The credits and FYES are unduplicated.

Table IV: Total summer semester 2015 enrollment

	Headcount			Credits			FYES*		
	UG	Grad	Total	UG	Grad	Total	UG	Grad	Total
Total Summer 2015	10,649	2,446	13,095	52,480	9,833	62,313	1,729	441	2,170
Total Summer 2014	10,425	2,487	12,912	50,687	9,862	60,549	1,667	431	2,098
Difference	224	-41	183	1793	-29	1764	62	10	72
% Diff	2.1%	-1.6%	1.4%	3.5%	-0.3%	2.9%	3.7%	2.3%	3.4%

Undergraduate enrollment was up slightly in the spring, and up more in summer. At the graduate level, headcount remains down, though credits are almost flat (and FYES is actually up).

While enrollment in the summer sessions has traditionally been variable from year to year, graduate enrollment has been trending down in recent years and undergraduate has remained essentially flat (Figure 1). At the graduate level, the factors behind the continued low enrollment are complex, but probably include the continuing weakness in the demand for teacher education.

Figure 1: Total summer enrollment by level 2006 – 2015

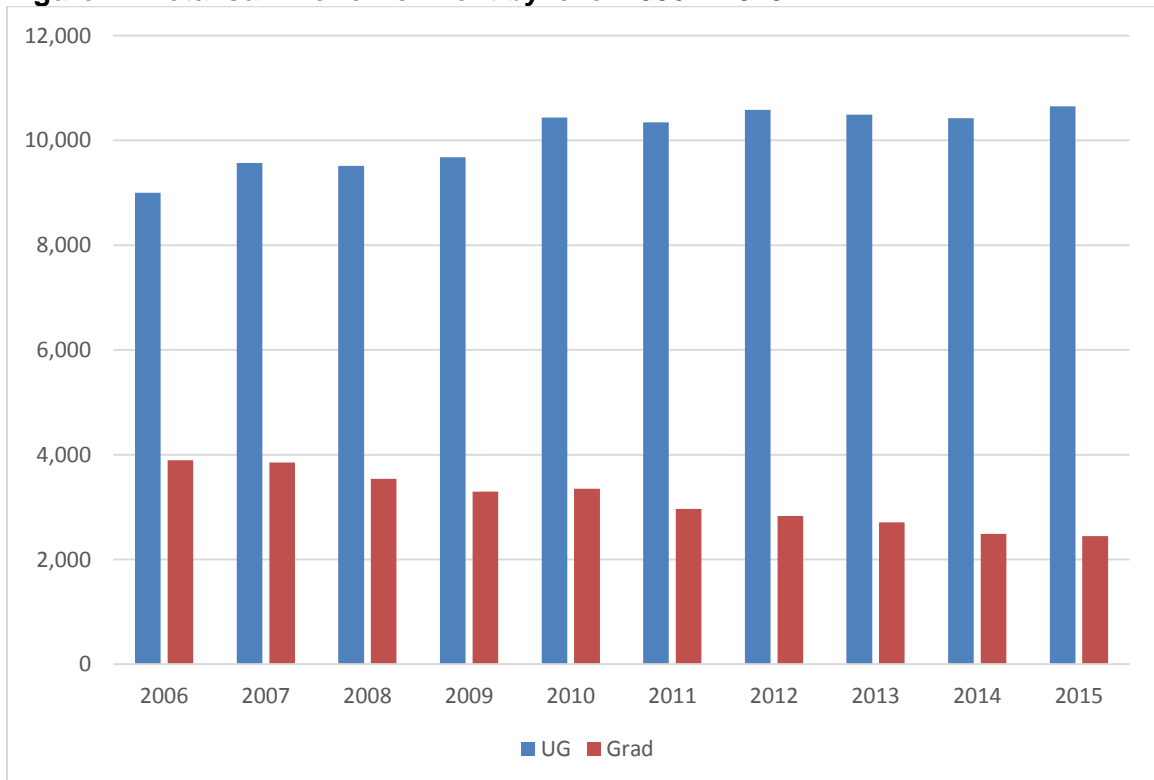


Table V presents unduplicated new student counts through both summer terms. At the undergraduate level, new students were up by over 2%. At the graduate level, new students were down by almost 16%.

Table V: Total summer new student enrollment

	FTIAC	Transfer	Other UG	Total New UG	Master's level	Doctoral Level	Profssnl Devlpmnt	Total New Grad
Total Summer '15	10	248	850	1108	95	3	74	172
Total Summer '14	19	246	818	1083	114	3	87	204
Difference	-9	2	32	25	-19	0	-13	-32
% Diff	-47.4%	0.8%	3.9%	2.3%	-16.7%	0.0%	-14.9%	-15.7%

Table VI, below, compares the headcount, student credit hours, and number of sections offered for each department (for the combined summer I & II terms). A review of offerings and enrollment indicates that there is not always a direct relationship between the number of sections offered and the number of students and credits enrolled. In some cases, enrollment increases when the number of sections is the same or less, and then in other cases increased offerings yield fewer enrollments. The apparent challenge is to offer a mix of courses that meet student needs.

Table VI: Summer I & II total section counts and enrollments

	Summer I & II Total 2014			Summer I & II 2015		
	Enrolled	SCH	Sections	Enrolled	SCH	Sections
COLLEGE OF ARTS & SCIENCES						
Art & Art History	335	1,340	26	300	1,197	22
American Studies	8	32	1	0	0	0
Biological Sciences	1,305	4,118	51	1,354	4,378	48
Chemistry	1,093	3,447	17	1,171	3,800	18
Cinema Studies	72	288	4	86	344	5
Communication & Journalism	562	2,191	29	605	2,394	30
English	404	1,616	25	485	1,940	28
History	152	604	10	132	526	9
Honors College	9	36	1	18	39	2
International Studies	109	436	7	71	290	4
Liberal Studies	17	68	1	15	60	1
Linguistics	184	682	19	133	508	10
Mathematical Sciences	787	3,146	24	766	3,064	24
Modern Lang. & Lit.	393	1,534	34	432	1,690	33
Music, Thea. & Dance	415	1,170	35	435	1,271	33
Philosophy	243	968	14	293	1,172	15
Physics	932	2,509	12	824	2,269	18
Political Science	279	1,098	19	232	924	17
Psychology	623	2,488	26	586	2,341	26
Religious Studies	96	384	10	84	336	8
Soc/Anth/CJ/SW	464	1,816	23	492	1,952	25
Women & Gender Studies	43	172	2	30	120	1
Writing & Rhetoric	444	1,726	34	431	1,695	31
COLLEGE TOTAL:	8,969	31,869	424	8,975	32,310	408
SCHOOL OF BUSINESS ADMINISTRATION						
Accounting	420	1,339	15	468	1,515	15
Economics	299	1,035	10	265	884	10
Finance	173	536	5	199	649	6
Management	376	1,199	19	454	1,472	16
Mgt. Information Syst.	246	726	10	301	880	12
Marketing	264	974	10	274	991	11
Organizational Behav.	310	931	10	299	866	10
Production & Ops. Mgt.	117	402	4	98	350	3
Quant. Meth. in Mgt.	104	312	3	168	504	5
SCHOOL TOTAL:	2,309	7,454	86	2,526	8,111	88
SCHOOL OF EDUCATION & HUMAN SERVICES						

Counseling	361	1,255	25	354	1,232	22
Educational Leadership	423	973	37	497	1,249	40
Hum. Dev. & Child Stud.	439	1,589	36	489	1,715	31
Human Resource Devel.	404	1,748	17	435	1,896	17
Reading & Lang. Arts	289	1,027	25	302	1,046	22
Teacher Developmt & Ed Studies	384	1,080	26	365	1,033	26
SCHOOL TOTAL:	2,300	7,672	166	2,442	8,141	158
SCHOOL OF ENGINEERING & COMPUTER SCIENCE						
Computer Sci. & Engr.	362	1,272	15	401	1,598	14
Electrical & computer Engr.	206	675	8	223	750	8
Engineering	353	561	6	384	611	6
Industrial & Systems Engineering	63	250	5	111	417	7
Mechanical Engr.	244	821	10	306	992	7
SCHOOL TOTAL:	1,228	3,579	44	1,425	4,368	42
SCHOOL OF HEALTH SCIENCES						
Exercise Science	449	1,058	25	368	845	22
Health Sciences	407	1,404	14	444	1,608	16
Biomeical, Diagnostic & Therapeutic	229	514	11	314	633	17
Occupational Safety & Health	120	348	8	87	266	7
Physical Therapy	258	675	10	244	649	8
Wellness Health Promotion	114	456	6	143	540	8
SCHOOL TOTAL:	1,577	4,455	74	1,600	4,541	78
SCHOOL OF NURSING						
SCHOOL TOTAL:	2,015	5,502	76	1,834	4,835	52
TOTAL ALL SCHOOLS	18,398	60,531	844	18,802	62,306	826