

2016-17
GOLDEN GRIZZLY
GUIDE



ORIENTATION AND NEW STUDENT PROGRAMS
and FIRST YEAR ADVISING CENTER

WELCOME

Welcome to your first year at Oakland University!

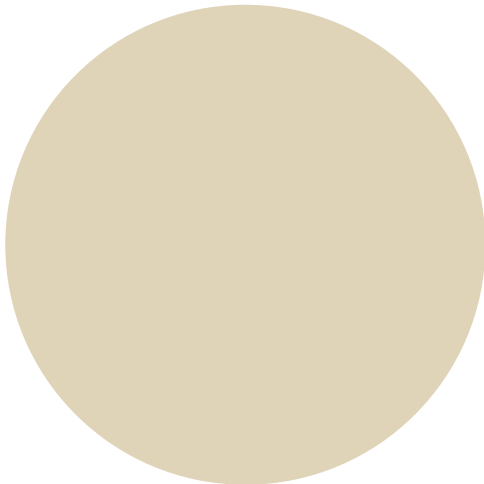
You are about to embark on an exciting journey and the First Year Advising Center staff is committed to guiding you every step of the way. We will help you make informed academic decisions and encourage you to reach beyond your own expectations. Our goal is to help you successfully reach your second year — putting you one step closer to graduation and a fulfilling life beyond OU. We can't wait to get started!

Sara Webb

Director, First Year Advising Center

GOOD LUCK AND GO GRIZZLIES!

My Orientation Group Leader



My Academic Adviser

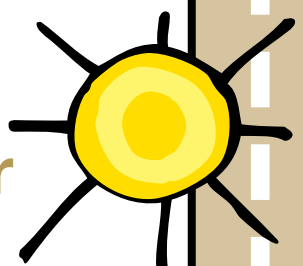


TABLE TOPICS WITH YOUR FAMILY

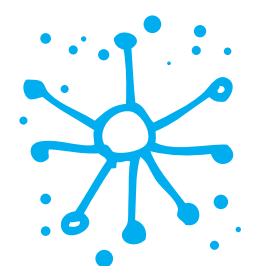
You are about to embark on an exciting journey filled with new experiences and expectations. Over the next few months, we encourage you to discuss the following topics with your parents and family in preparation for the year ahead.

- Create a “stay-in-touch” plan that outlines how often you will communicate and in what way.
- Discuss your expectations about what/how information will be shared concerning grades and course schedules. Determine if you will designate a proxy in MySAIL.
- Discuss your plan to pay for your college education and any related expenses. Determine if you will designate an authorized user in eBill.
- Involve your parents/family in your academic plans by explaining how the courses you registered for fit into your degree plan.
- Examine the many ways to become involved in extracurricular activities. Make a plan to get connected in your first semester.
- Review your priorities and create a plan for balancing your time between school, work, social/family obligations, etc.
- Identify ways your parents/family can support you in achieving your goals.

Summer (May – August)



GOLDEN GRIZZLY TIMELINE



Winter (January – April)

Attend New Student Orientation Part One



Confirm your attendance for New Student Orientation Part Two (oakland.edu/part2) (16)



Sign up for text message alert system (oupolice.com/emergencies/alerts)
 Register with Disability Support Services (if applicable) (35)
 Apply for on-campus jobs (oucareerlink.com) (27)
 Enroll in direct deposit and payment plans (27)



Fall (September – October)



Fall (November – December)

Complete the FAFSA for 2016-17 (fafsa.gov)

- Check financial aid status in MySAIL (26)
- Complete outstanding requirements (26)
- Compare award amount to cost estimator (oakland.edu/costestimator)
- Complete Federal Direct Loan Entrance Counseling and Master Promissory Note (studentloans.gov)
- Submit a revision form to make changes to your awards or housing plans
- Read Student Financial Services Policies and Conditions (oakland.edu/financialservices/policies)

Forward official AP/IB test scores and updated college transcripts to the Office of the Registrar (36)
 Read student handbook (oakland.edu/handbook)
 Send final high school transcripts to the Office of Undergraduate Admissions (36)

Make changes to your fall schedule by September 8 without instructor's permission (13)
 Pay your OU bill in full by September 22 or sign up for a payment plan (27)

Review winter semester financial aid

- Ensure your expected enrollment on MySAIL's financial aid matches the number of credits for which you are actually enrolled
- Complete outstanding requirements (26)
- Submit a revision form to make changes to your awards or housing plans

Withdraw from fall classes by November 3 (7)

Verify that you are on track to completing 28 credits and establishing a strong GPA for major and scholarship requirements
 View fall grades in MySAIL

Submit housing contract for 2017-18 (36)



Schedule/attend winter required appointment in FYAC (21)



Schedule/attend fall required appointment in FYAC, if not already done so (18)



Attend Student Leader Recruitment Fair and participate in activities through March (oakland.edu/fyac/studentleader)
 Research major/career decisions (18)



LEGEND

- Required
- Deadlines
- Opportunities
- Progress check
- More information available on this page

Attend New Student Orientation Part Two on August 31, 2016 (16)

Participate in Welcome Week activities (18)
 Participate in one campus activity or organization throughout the semester (28)

Schedule/attend fall required appointment in FYAC by the deadline (18)

Review the summer financial aid information to determine eligibility for summer aid. If eligible, submit application (oakland.edu/financialservices/summer)



Winter (March – April)



Participate in Student Leader Recruitment process (oakland.edu/fyac/studentleader)

Participate in one campus activity or organization throughout the semester (28)

Apply for summer jobs

Apply for scholarships



Make changes to your winter schedule by January 11 without instructor's permission (13)

Pay your OU bill in full by January 25 or sign up for a payment plan (27)

Withdraw from winter classes by March 15 (7)

Update 2016-17 FAFSA with accurate tax information (fafsa.gov)



Schedule/attend winter required appointment in FYAC, if not already done so (21)

Verify employment for next year



Register for second year (13)



Verify that you have completed 28 credits and established a strong GPA for major and scholarship requirements

View winter grades in MySAIL



Participate in Second Year Experience (oakland.edu/advising/sye)

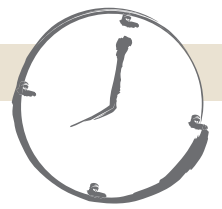


UNLOCK THE KEY TO SUCCESS

- Check OU email regularly
- Visit faculty office hours
- Attend workshops, lectures, programs, music/art and athletic events
- Participate in free tutoring/writing assistance
- Utilize Kresge Library services
- Attend Supplemental Instruction
- Use the Recreation Center
- Stay healthy with check-ups/vaccines through Graham Health Center
- Seek free personal and career counseling
- Develop a resume with Career Services



High School vs. College



High school is mandatory and free. **College is voluntary and expensive.**

In high school, your time is structured by others. **In college, YOU decide how to spend your time.**

Parents are often involved in high school (talking to your teachers or knowing your grades), **but in college, FERPA protects your rights. It's your responsibility to communicate information to your parents.**

In high school, classes are back-to-back. **In college, you could have hours separating your classes.**

High school teachers approach you if they believe you need assistance. **In college, professors expect you to initiate contact if you need assistance.**



High school teachers and guidance counselors often make choices for you and monitor your graduation requirements. **In college, it's your responsibility to work with an academic adviser to keep these details straight.**

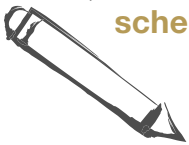


High school classes often have fewer than 35 students. **College courses can have up to 300+ students (although rare).**

In high school, study time is minimal and you can often cram. **In college, you're expected to do most of the work on your own, outside of the classroom, and manage your own time to ensure you've learned the material.**

In high school, you seldom need to read anything more than once. **In college, you're expected to read in advance and be able to participate in discussions.**

High school teachers often re-arrange tests to avoid conflict with other school events, **while college professors schedule tests without regard to what might be happening in your other courses.**

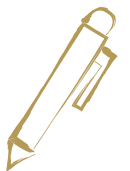


High school teachers check your work. **College professors seldom do this; you are expected to know the class material.**

High school teachers provide you with work you might have missed when absent. **College professors expect you to get caught up on your own or to ask a classmate for his/her notes.**

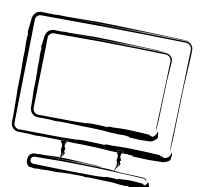
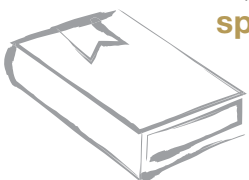
High school teachers remind you of assignments and due dates. **College professors give you a syllabus on the first day and expect you to note important dates.**

High school teachers carefully monitor attendance. **College professors may not formally take roll, but they'll still know whether or not you attended.**



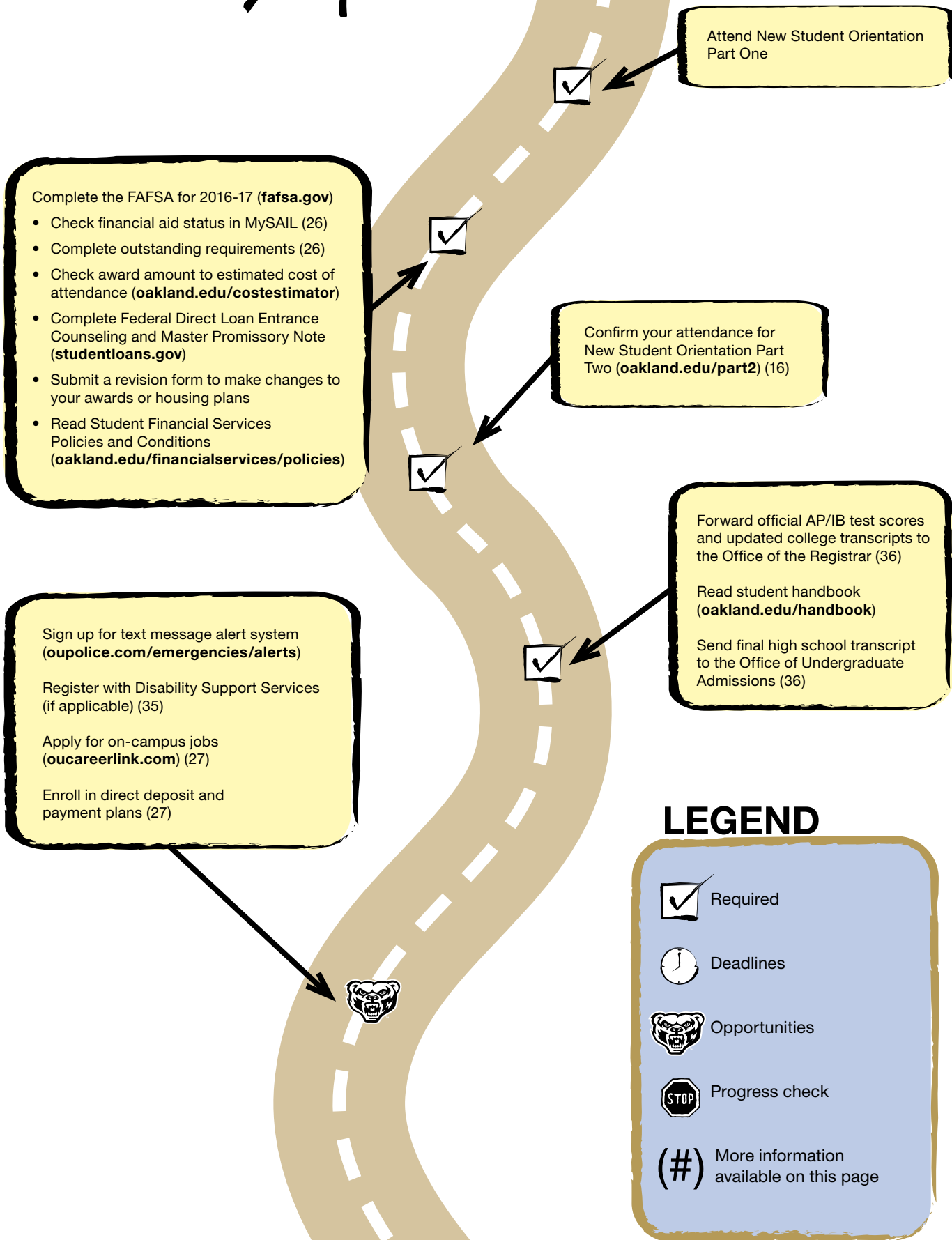
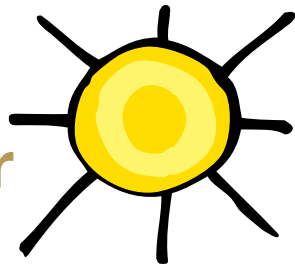
In high school, you often have multiple grades that add up to your final grade. **In college, major tests may be the only grades you have (and there may be as few as 2 or 3 tests total).**

In high school, extra credit can often be enough to bump your grade up. **In college, extra credit is sparse and never enough to increase your overall grade by an entire point.**



Summer

(May – August)



Attend New Student Orientation Part One

Complete the FAFSA for 2016-17 (fafsa.gov)

- Check financial aid status in MySAIL (26)
- Complete outstanding requirements (26)
- Check award amount to estimated cost of attendance (oakland.edu/costestimator)
- Complete Federal Direct Loan Entrance Counseling and Master Promissory Note (studentloans.gov)
- Submit a revision form to make changes to your awards or housing plans
- Read Student Financial Services Policies and Conditions (oakland.edu/financialservices/policies)

Confirm your attendance for New Student Orientation Part Two (oakland.edu/part2) (16)

Forward official AP/IB test scores and updated college transcripts to the Office of the Registrar (36)

Read student handbook (oakland.edu/handbook)

Send final high school transcript to the Office of Undergraduate Admissions (36)

Sign up for text message alert system (oupolice.com/emergencies/alerts)

Register with Disability Support Services (if applicable) (35)

Apply for on-campus jobs (oucareerlink.com) (27)

Enroll in direct deposit and payment plans (27)

LEGEND

- Required
- Deadlines
- Opportunities
- Progress check
- More information available on this page



Summer

(May – August)

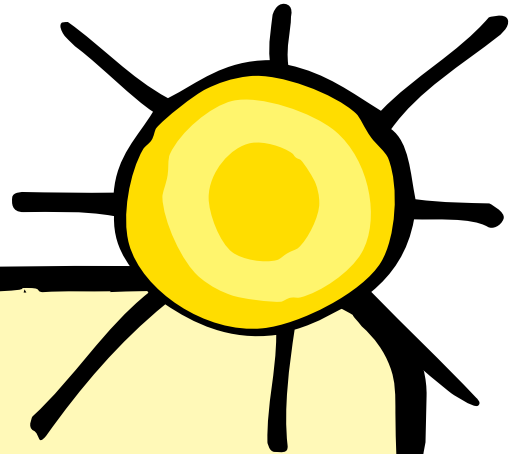
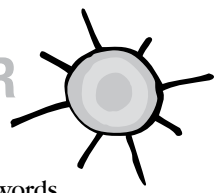


Table of Contents

Activating Important Accounts	page 3
Undergraduate Majors/Programs	page 4
Academics and Advising.....	pages 5-6
Academic Lingo.....	page 7
Course Planning	page 8
COM 101.....	page 9
First Year Programs and Communities.....	page 10
General Education Courses	page 11
Registering for Classes	page 12
Schedule Planning Worksheet.....	pages 13-14
So Now What?.....	page 15



GRIZZLY ID AND PIN

Oakland University students are assigned an OU identification number called a Grizzly ID. The Grizzly ID includes the letter G followed by eight numeric characters. You'll use it to set up your accounts and reset your passwords. You can find your Grizzly ID in your admission letter.

Grizzly ID



Six-digit PIN

NETID AND PASSWORD

Each OU student has a Network Identification (NetID) to access MySAIL, Moodle and email, and to log on to the university network. Directions for setting up your NetID and password are on page 3.

NetID Username



Password

EMAIL AND THE INTERNET

Webmail

OU Webmail, webmail.oakland.edu, allows you to access your Oakland email account from any Internet-connected computer. Much like the features of commercial email providers like Google, through Webmail you can send and receive messages, manage your email folders, check spelling and view attachments. Access Webmail with your NetID and password.

Your OU Email Account

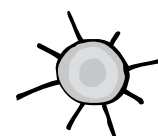
You are responsible for checking and reading the messages sent to your Oakland email account regularly. You will receive important information from OU via your official OU email address, including:

- Grades
- Student bills
- Financial aid status
- Schedule of classes
- Latest news
- Events and information



IMPORTANT ACCOUNTS

	URL	LOGIN	USES
MySAIL *Download the OU MySAIL mobile app, available for iPhone, iPod touch and Android devices, for easy access to most of the services listed here.	oakland.edu, click on MySAIL or mysail.oakland.edu	NetID username and password	<ul style="list-style-type: none"> • Register for classes • Check grades • Access eBill, Webmail, Moodle, GrizzOrgs • Check financial aid status • View Progress to Degree • Buy books • Designate proxy to view academic and financial aid information • Enroll in direct deposit
Webmail	webmail.oakland.edu	NetID username and password	<ul style="list-style-type: none"> • Send and receive messages • View attachments • Receive OU official communication regarding: <ul style="list-style-type: none"> - Grades - Student bills - Financial aid status - Schedule of classes - Campus news and events
Moodle	moodle.oakland.edu	NetID username and password	<ul style="list-style-type: none"> • Course management • View course assignments, readings, syllabi and other materials
eBill	oakland.edu/ebill	Grizzly ID and PIN	<ul style="list-style-type: none"> • View account balance • Make payments • Designate authorized user to view and pay bills
GrizzCard	oakland.edu/grizzcard		<ul style="list-style-type: none"> • Recreation Center membership card • After-hours access to residence hall • Meal plan and campus dining card • Kresge Library card • Printing services • GrizzCa\$h • Ticket to campus activities and services • Oakland University Credit Union Visa debit card



IMPORTANT ACCOUNTS *(continued)*

Your MySAIL and NetID (Email) Accounts

All new students are required to activate their MySAIL and NetID accounts before starting at the University. For instructions on how to do so, visit oakland.edu/activate.

Forwarding Your OU Email to Another Account

1. Log in to Webmail at webmail.oakland.edu
2. Select the gear symbol and click “Settings”
3. Select the “Forwarding and POP/IMAP” tab
4. Select “Add a forwarding address” and follow the directions provided

Updating Your Address and Phone Number

1. Open a Web browser and go to oakland.edu
2. Click on “MySAIL” and log in using your NetID and password
3. Select “Sail”
4. Select “Personal Information”
5. Select “View/Update Address(es) and Phone(s)”
6. Scroll down to the section labeled “Primary” and click on “Current”
7. You can now update your primary address or phone number. When you are finished and the information is accurate, select “Submit” in the bottom left corner.

Adding a Proxy in MySAIL

1. Open a Web browser and go to oakland.edu
2. Click on MySAIL and log in using your NetID and password
3. Select “Sail”
4. Select “Student Services”
5. Select “Manage Proxy”
6. Select “Add Proxy”
7. Fill in the required fields and select “Add Proxy”
8. Once the proxy has been added, click on the yellow down arrow next to their name
9. On the “Profile” tab, select a relationship type from the drop-down menu and indicate a start and stop date for your proxy to have access to your information
10. On the “Authorization” tab, select all areas of MySAIL that you would like your proxy to have view-only access

Adding an Authorized User in eBill

1. Open a Web browser and go to oakland.edu
2. Click on “MySAIL” and log in using your NetID and password
3. Select “eBill” and log in using your Grizzly ID and PIN
4. Under the “My Account” tab, select “Authorized User”
5. Enter the email address of the person you would like to add as an authorized user and indicate which areas of eBill you'd like your authorized user to be able to view
6. Select “Continue”
7. If you agree to the terms given, check the box and select “Continue”
8. An email will be sent to your authorized user with directions on how to log in to eBill

Syncing Your Cell Phone to OU Email

Visit oakland.edu/connected/phonesync and sync your cell phone to your OU email account so you can receive important messages about eBill, academics and special events on the go!

Printing on Campus Using wepa

1. Upload your documents to the wēpa print cloud using your NetID and password.
2. Login at any wēpa print station with your GrizzCard
3. Select and print your documents.

There are a few ways you can upload and print your documents:

- Cloud - Access your Box, Dropbox, Google Drive, Office 365 or OneDrive account at any wepa print station to print your files.
- Web - Login at wepanow.com/webupload, select your documents and “send to wēpa.”
- Traditional - (One-time download to your personal computer wepanow.com/printapp) Open your document, choose “file > print” and select your preferred wēpa printer.
- Email - Using your NetID, email your documents to print@wepanow.com.
- Mobile - Download the “wēpa Print” app and follow the instructions.
- USB - Insert your USB drive at any wēpa print station.

Visit wepanow.com/maps and enter 2200 N. Squirrel Rd. in the “Search Location” box to find print stations near you.

A PROGRAM FOR EVERY PASSION

OU offers more than 130 bachelor's degree programs, so you're sure to find what you're looking for.

COLLEGE OF ARTS AND SCIENCES

Acting (BFA)*
 Actuarial Science**
 Anthropology
 Applied Statistics
 Art History
 Art, Studio Art (Drawing, New Media, Painting, Photography)
 Art, Studio Art (K-12)†
 Biochemistry
 Biology†
 Biomedical Sciences
 Chemistry†
 Chinese Language and Literature
 Chinese Studies
 Cinema Studies
 Communication
 Creative Writing
 Criminal Justice (Homeland Security, Information Security and Assurance)
 Dance (B.A./BFA)*
 Economics (B.A.)**
 English†
 Environmental Science (Environmental Health, Environmental Sustainability and Resource Management)
 French Language and Literature
 French (K-12)†
 German Language and Literature
 German (K-12)†
 Graphic Design
 History†
 International Relations

Japanese Language and Literature†
 Japanese Studies
 Japanese (K-12)†
 Journalism
 Latin American Language and Civilization
 Latin American Studies
 Liberal Studies
 Linguistics
 Mathematics†
 Medical Physics
 Music* (Instrumental Performance, Piano Performance, Vocal Performance)
 Music (K-12)*†
 Musical Theatre (BFA)*
 Philosophy
 Physics†
 Political Science
 Pre-Dentistry
 Pre-Law
 Pre-Medicine
 Pre-Optometry
 Pre-Veterinary
 Psychology
 Public Administration and Public Policy
 Social Work (BSW)
 Sociology
 Sociology/Anthropology
 Spanish Language and Literature
 Spanish (K-12)†
 Theatre*
 Theatre Design and Technology (BFA)*
 Women and Gender Studies
 Writing and Rhetoric

SCHOOL OF BUSINESS ADMINISTRATION

Accounting
 Business Economics
 Economics (B.S.)
 Finance
 General Management
 Human Resources Management
 Management Information Systems
 Marketing
 Operations Management

SCHOOL OF EDUCATION AND HUMAN SERVICES

Elementary Education
 Human Resource Development
 Secondary Education†

SCHOOL OF ENGINEERING AND COMPUTER SCIENCE

Bioengineering***
 Computer Engineering
 Computer Science
 Electrical Engineering
 Engineering Chemistry***
 Engineering Physics***
 Industrial and Systems Engineering
 Information Technology
 Mechanical Engineering

SCHOOL OF HEALTH SCIENCES

Applied Health Sciences††
 (Healthcare Leadership or Health Promotion)

Biomedical Diagnostic and Therapeutic Sciences (Medical Laboratory Science, Histotechnology, Nuclear Medicine Technology, Pre-Professional Studies, Radiologic Technology)
 Environmental Health and Safety
 Health Sciences (Exercise Science, Integrative Holistic Medicine, Nutrition and Health, Pre-Pharmacy, Pre-Physical Therapy, Pre-Health Professional Studies)
 Wellness, Health Promotion and Injury Prevention

SCHOOL OF NURSING

Nursing (BSN)
 RN-BSN Degree Completion Sequence for Registered Nurses‡

INTEGRATIVE STUDIES

Integrative Studies†††

UNDECIDED STUDENTS

OU provides advising specifically for those who are undecided. Oakland's First Year Advising Center will assist you in selecting your major.
oakland.edu/fyac

GRADUATE STUDY

Oakland offers more than 120 graduate programs including post-baccalaureate certificates, master's degrees, and Ph.D. programs.
oakland.edu/grad

* Audition required.

** Offered jointly with the School of Business Administration.

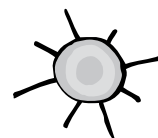
*** Offered jointly with the College of Arts and Sciences.

† The Secondary Teacher Education Program (STEP) at Oakland is a partnership program in secondary education leading to a recommendation for certification to the Michigan Department of Education. Students earn their disciplinary credits (in Biology, Chemistry, English, History, Mathematics or Physics) from the College of Arts and Sciences and their professional course credits from the School of Education and Human Services. Oakland also offers six K-12 partnership programs between the College of Arts and Sciences and the School of Education and Human Services: French, German, Japanese, Music, Spanish and Studio Art.

†† Offered exclusively through Macomb Community College. For transfer students only.

††† Offered on campus and as an online program.

‡ Offered online only.



ACADEMICS AT OU

University Structure

Oakland University has six undergraduate units: the College of Arts and Sciences and the Schools of Business Administration, Education and Human Services, Engineering and Computer Science, Health Sciences, and Nursing. Each major is housed within a college or school.



Degree Components

Each degree is comprised of general education and major requirements. Minors are optional and (depending on major) can lengthen your time to degree completion.

General Education

General Education is the basis of your undergraduate education and is a requirement for all majors. This is the core body of knowledge that all students study, setting the groundwork for improved critical thinking skills and enriching opportunities upon graduation. The requirements complement every major, giving you a well-balanced, refined education.

While General Education requirements vary for each major, all OU students will complete a minimum of 40 credits total in the following categories:

Knowledge Foundations

- Writing Foundations
- Formal Reasoning

Knowledge Explorations

- Arts
- Foreign Language and Culture
- Global Perspective
- Literature
- Natural Science and Technology
- Social Science
- Western Civilization

Knowledge Integration

- Knowledge Application
- Capstone
- Diversity
- Writing Intensive in Major
- Writing Intensive in General Education

Major

To attain a degree, you must choose a major. Majors expose students to a depth of knowledge in a specific field of study. OU offers students various ways to apply their learning in settings outside the classroom. Many students are involved in undergraduate research, creative inquiry and pursue related study/service learning opportunities.

Many majors at OU require “major standing,” which means full acceptance into the major is only granted to students who meet certain academic criteria during their first few semesters at OU. Some majors require an application for major standing, while others do not. Your FYAC adviser will explain these requirements and assist you in preparing for the application process.



ACADEMIC ADVISING

During your first year, you will receive advising from your assigned academic adviser in the First Year Advising Center. Starting in your second year, you will move to the academic advising unit in your college or school. College/school academic advisers and faculty advisers in the academic units will provide advising until graduation.

First Year Advising Center Academic Advisers

Who they serve

All first-year students and undecided/re-deciding students

How they help

- Support your academic and social transition to college
- Understand your academic program and course planning for first and second year
- Assist in major and career exploration
- Referrals to campus resources and involvement opportunities
- Discuss academic progress, including course difficulties and probation status

When to meet

Once a semester (required)

For more information

oakland.edu/fyac



College/School Academic Advisers

Who they serve

Students in pre-major status or with a declared major from their second year until graduation

How they help

- Preparation for class registration, including course overrides and inquiries about transfer credits or taking courses at another institution
- Review of your degree evaluation and formal graduation audit (semester before graduation)
- Answer questions about adding/dropping/withdrawing from classes
- Discuss academic progress, including course difficulties and probation status
- Assist in major, minor and career exploration
- Change/add majors or minors
- Provide information on student involvement, internships and study abroad

When to meet

Once a year, at minimum

For more information

oakland.edu/advising

Faculty Advisers

Who they serve

All students, but particularly those with a declared major in their last two years

How they help

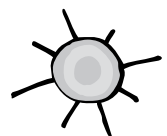
- Explore career options for chosen major
- Assist in selecting elective credit to meet your degree requirements (if applicable)
- Discuss internships, research opportunities and graduate school
- Process overrides for students with a major in the College of Arts and Sciences

When to meet

Varies depending on student needs

For more information

oakland.edu/advising



ACADEMIC LINGO

Add – Students may register and add courses without faculty signature via MySAIL Web registration or in person at Registrar Services through the first week of classes. During the second week of classes, instructor’s permission is required.

AFC – Anton/Frankel Center, situated in Mt. Clemens, is a location in Macomb County that offers more than 100 OU courses each year.

Catalog – Published online annually, this reference contains the requirements needed to achieve your degree at OU. Each major is listed, including all courses that are offered in each subject area. Also included are requirements that you need to follow for your major. catalog.oakland.edu

Corequisite – Courses (usually two or more) that must be taken simultaneously.

Days of the Week in Schedule of Classes

M	T	W	R	F	S	U
MONDAY	TUESDAY	WEDNESDAY	THURSDAY	FRIDAY	SATURDAY	SUNDAY

For example, a course that appears to meet on TR meets on Tuesday and Thursday of each week.

Drop – After initially registering for a semester, students may go back and drop a course via MySAIL Web registration, in person at Registrar Services, by fax or by certified mail at any time until the last day to drop a course. First-year students interested in dropping courses should consult with their FYAC adviser first. Make an informed decision by visiting oakland.edu/dropornot.

Full-time – Students are considered full time when enrolled in at least 12 credit hours in one semester.

Good Academic Standing – Students with a cumulative grade point average of 2.0 or above are considered to be in good academic standing. Students who fail to meet this standard are placed on academic probation and must meet minimal standards of progress each semester to continue at the university. (Each program may have higher GPA requirements for good academic standing. See your FYAC adviser for more information.)

MUC – Macomb University Center, situated in Clinton Township, is a location in Macomb County that offers more than 200 OU courses each year.

Override – Permission granted to a student for a class they are prohibited from registering for. Consult with your FYAC adviser.

Prerequisite – Students may register for a course that requires a prerequisite; however, they must successfully complete that prerequisite before the course begins.

Professor/Faculty – Responsible for teaching courses, conducting research and providing service to the university, professors/faculty are credentialed in their field of study.

Repeat – Students may repeat a course once (sometimes twice) after their first attempt to improve their grade earned during prior enrollment, but they must do so at OU. Students should consult with their academic adviser as repeats can impact time to degree completion, a subsequent semester of courses and OU scholarship

eligibility. The most recent grade will be the grade of record regardless of whether it is the highest grade earned.

Schedule of Classes – Found on MySAIL, the schedule of classes includes class offerings for each semester, including days, times, instructors and locations.

Teaching Assistant (TA) – Master’s or doctoral level students in the field who work closely with faculty in the development of classes and classroom management. They may teach classes or labs/workshops in their department of study.

Waitlist – An electronic process (located in SAIL), available for selected courses only, and allows students to add themselves to a waitlist. Students are notified via OU email when a seat becomes available in the course. Students must register for the course within 24 hours; if the student does not register within the time allotted, the next student on the list will be offered the seat. Being on a waitlist does not guarantee registration into the course.

Withdrawal – After classes begin, students may withdraw from a course via MySAIL Web registration, in person at Registrar Services, by fax, or by certified mail. Students have until 4 p.m. on the last day of the withdrawal period to withdraw from the course. Freshmen interested in withdrawing from a course should consult with their FYAC adviser first. Students who do not officially withdraw within the drop/withdrawal time period will remain officially enrolled. Instructors will assign the grade earned at the completion of the course. Simply notifying faculty or ceasing to attend classes does not relieve students from financial obligations. Make an informed decision by visiting oakland.edu/dropornot.

Class Structure

OU offers different course delivery methods depending on the best instruction necessary for the discipline.

- **Lecture** – You will meet in the same classroom with the same instructor for every class period.
- **Lecture/Online Hybrid** – Common in writing courses, you may meet once or twice a week in a classroom, but then also have required online components through Moodle, OU’s online course management system.
- **Online** – Course offered online through Moodle. A maximum of three on-campus meetings may be required.
- **Lab** – A required corequisite of courses typically in the natural science and engineering areas.
- **Workshop** – Similar to labs and most common with mathematics courses, workshops are a required corequisite of a course and provide an opportunity for you to work problems and speak with your instructor in a smaller setting.
- **Recitation** – A required extra session of a course often used for additional lecture time or to administer quizzes or exams.
- **Supplemental Instruction (SI)** – A free service that provides organized study sessions two to three times per week for students enrolled in traditionally difficult courses. SI Leaders, students with previous course success, attend the course along with students and then facilitate the study sessions.

Important note: The number of CREDITS a course has does not always EQUAL the number of hours in class per week.

COURSE PLANNING

Determining How Many Credits to Take

Most Oakland University classes are four credits. This means that the class will meet for approximately four hours each week. Some courses expect you to also participate in labs and/or recitations which require additional time. In order to achieve sophomore standing at the end of your first year, you need to complete 28 credits. Keep in mind that at Oakland it is expected that you will study at least two hours outside of class for every hour spent in class. A full course load is typically 12-16 credits. It is important to recognize that you will need to spend less time on and give less priority to outside activities, including work, in order to be successful academically.

Sample First-year Schedule

FALL SEMESTER

Writing 102, 150 or 160 (4 credits)
Major course (4 credits)
General Education (4 credits)
General Education (4 credits)
COM 101 (1 credit)
TOTAL = 17 credits

WINTER SEMESTER

Writing 150 or 160 (4 credits)
Major course (4 credits)
General Education (4 credits)
General Education (4 credits)
TOTAL = 16 credits

Scheduling Your Classes

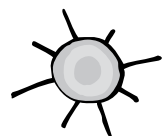
New students seem most anxious about developing the “perfect” class schedule. When lining up your courses, here are some things to consider:

- **16 credits is recommended.** Our research shows that taking 16 credits will help keep you on track for graduation in four to five years. Therefore, we encourage you to register for 16 credit hours each semester in order to graduate on time (12 credit hours is considered full-time).
- **Avoid “block” scheduling.** College and high school are not the same. Taking four courses back-to-back allows no time to review notes, have a snack, talk to friends or rejuvenate between subjects. For this reason, when possible, try to create a balanced schedule.
- **Avoid evening classes.** Evening classes typically meet one time a week for four hours, which can be challenging for a freshman student.
- **Try working on campus!** Work should be scheduled around classes, not classes around work. You need to set positive academic priorities from the very beginning. If an employer isn’t flexible with your class schedule, try to find an employer who will be.
- **Keep in mind** that your schedule depends on major courses, when they are offered and what is available.



28 || DO YOU HAVE IT?

oakland.edu/28



COLLEGIATE COMMUNICATION 101

Collegiate Communication (COM 101) is a graded, one-credit course designed to help you have a successful start at OU. Research shows that students who enroll in COM 101 during their first semester are more likely to be successful in their first year. Students will learn communications skills that will enhance academic, personal and social success in college.

Fall 2016 Offerings

CRN	Day	Time
40828	Monday	Noon - 1:20 p.m.
40829	Monday	1 - 2:20 p.m.
41252	Monday	2:40 - 4 p.m.
40694	Monday	3 - 4:20 p.m.
41253	Monday	3:30 - 4:50 p.m.
41174	Monday	6:30 - 7:50 p.m.
41251	Tuesday	10 - 11:20 a.m.
41249	Tuesday	Noon - 1:20 p.m.
40831	Tuesday	1 - 2:20 p.m.
40577	Tuesday	3 - 4:20 p.m.
40832	Wednesday	Noon - 1:20 p.m.
40833	Wednesday	1 - 2:20 p.m.
41533	Wednesday	2:40 - 4 p.m.
43256	Wednesday	3-4:20 p.m.
42007	Thursday	10 - 11:20 a.m.
40836	Thursday	1 - 2:20 p.m.
40072	Thursday	3 - 4:20 p.m.
43257	Thursday	3:30 - 4:50 p.m.



"COM 101 really helped me understand time management and making short and long term goals. It was a great class to help transition from high school to college."

"The best thing about this class is how you get to communicate with others and learn new things about the campus that are helpful."

FIRST-YEAR PROGRAMS

HONORS COLLEGE

“Making Discoveries: The First Year Colloquium”

All Honors College freshmen take this four-credit class. The exciting Making Discoveries course includes interactive talks, workshops, visiting speakers, service learning, a “Making Your Career” exploration day, and involvement in the OU community. During one class session each week, the class meets in small groups of 12-15 students to explore ideas, plan on- and off-campus events, and discuss progress on the course projects. Students in The Honors College have the opportunity to live in The Honors College Living-Learning Community.



University Housing Communities

My FYE

First-year students who live in this community will explore a variety of academic majors and careers by engaging in activities that promote the development of academic social networks. Residents also have the opportunity to take field trips to places like the Detroit Institute of Arts and a variety of other metro Detroit locations.

Pre-Nursing

First-year students interested in applying for the nursing program will receive mentoring from current nursing students, and participate in experiential learning opportunities within the School of Nursing.



Engineering

The Engineering living-learning community is for students with a major in the School of Engineering and Computer Science. Students will live with other future engineers and have the opportunity to participate in off-site field trips to local businesses.

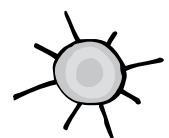
Pre-Business

First-year students with a major in the School of Business Administration will develop a deeper understanding of Oakland's business program and participate in academic success and leadership workshops.



Eco-Interest

The Eco-Interest Living-Learning Community was created to increase student awareness about local and global environmental issues. This floor is home to students ranging from freshman to senior status who are interested in learning about sustainable and eco-friendly practices. Through programs, field trips and community service, students learn about living sustainably and develop green living habits. This floor is open to students who are interested in developing sustainable ways of living, not only in the residence halls, but also at home, work and in the community.



General Education Courses (100- and 200-levels only)

WRITING FOUNDATIONS (Completion of WRT 160 in the first year is recommended)

FORMAL REASONING (Complete by junior year)

CIT 120	Introduction to Computing and Programming using Excel (4)
CIT 122	Computer Animation (4)
CIT 130	Introduction to Computer Programming (4)*
CSE 120	Introduction to Computing and Programming using Excel (4)
CSE 130	Introduction to Computer Programming (4)*
LIN 180	Linguistic Analysis (4)
LIN 183	Formal Rules of Sound Structure (4)
LIN 184	Formal Rules of Phrase Structure (4)
MTE 211	Mathematics for Elementary Education II (4) Prerequisite: MTE 210
MTH 118	Mathematical Sciences in the Modern World (4)
MTH 121	Linear Programming Elementary Functions (4)*
MTH 122	Calculus for the Social Sciences (4)*
MTH 154	Calculus I (4)*
OSH 141	Quantitative Methods for Environmental Health and Safety (4)
PHL 102	Introduction to Logic (4)
PHL 107	Introduction to Symbolic Logic (4)
STA 225	Introduction to Statistical Concepts and Reasoning (4)*
STA 226	Applied Probability and Statistics (4)*
STA 228	Statistical Methods for Biology (4)*

ARTS

AH 100	History of Western Art, Prehistory through Medieval (4)
AH 101	History of Western Art, Renaissance to Present (4)
AH 104	Arts of Asia and the Islamic World (4)
CIN 150	Introduction to Film (4) (AND meets U.S. Diversity)
DAN 173	Dance History and Appreciation (4)
DAN 175	Dance in American Culture (4) (AND meets U.S. Diversity)
MUS 100	An Introduction to Music (4)
MUS 101	What's On Your Playlist: Music Listening and the Self (4)
MUS 102	Exploring Technology in Music (4)
MUS 105	Foundations of Rock (4) (AND meets U.S. Diversity)
MUS 106	Exploring Film Music (4)
MUS 107	Exploring Jazz (4) (AND meets U.S. Diversity)
MUS 110	Exploring African Music (4) (OR meets Global Perspective)
MUS 111	Exploring Caribbean Music (4) (AND meets U.S. Diversity)
MUS 131	History and Literature of Western Tonal Music (3)*
SA 100	Foundations of Visual Literacy (4)
THA 100	Introduction to Theatre (4)

FOREIGN LANGUAGE AND CULTURE

ALS 176	The Humanity of Language (4)
ARB 114	Introduction to Arabic Language and Culture I (4)
CHE 114	Introduction to Chinese Language and Culture I (4)
FRH 114	Introduction to French Language and Culture I (4)
FRH 119	Accelerated Review of Elementary French and French Culture (4)
GRM 114	Introduction to German Language and Culture I (4)
HBR 114	Introduction to Hebrew Language and Culture I (4)
IT 114	Introduction to Italian Language and Culture I (4)
JPN 114	Introduction to Japanese Language and Culture I (4)

LIN 181	Introduction to the Development of the English Language (4)
LTN 114	Introduction to Latin Language and Roman Culture (4)
ML 191	Tutorial in Foreign Language (4)*
SPN 114	Introduction to Spanish Language and Culture I (4)
SPN 119	Accelerated Review of Elementary Spanish and Spanish Culture

GLOBAL PERSPECTIVE

AN 102	Culture and Human Nature (4) (OR meets Social Science)
AN 200	Global Human Systems (4)
ECN 160	Introduction to Global Economy (4) (AND meets Writing Intensive in Major)*
ECN 202	Principles of Global Macroeconomics (OR meets Social Science)* (4)
ENG 260	Masterpieces of World Cinema (4)
GEO 200	Global Human Systems (4)
HST 205	World History
HST 275	Introduction to Middle East History (4)
IS 200	Global Human Systems (4)
IS 205	Issues in Global Health
IS 210	Perspectives on China (4)
IS 220	Perspectives on Japan (4)
IS 230	Perspectives on Africa (4)†
IS 240	Perspectives on India (4)†
IS 250	Perspectives on Latin America (4)†
IS 260	Perspectives on Russia and Eastern Europe (4)†
IS 270	Perspectives on the Middle East (4)†
MGT 110	Contemporary World Business (4) (AND meets Writing Intensive in Gen Ed)†
MUS 110	Exploring African Music (4)
PS 114	Issues in World Politics (4) (OR meets Social Science)
PS 131	Comparative Politics (4) (OR meets Social Science) †
REL 101	Introduction to Islam (4) †
REL 102	Introduction to Judaism (4) †
REL 103	Introduction to Christianity (4)

LITERATURE

ENG 100	Masterpieces of World Literature (4)
ENG 105	Introduction to Shakespeare (4)
ENG 111	Modern Literature (4)
ENG 112	Literature of Ethnic America (4) (AND meets U.S. Diversity)
ENG 224	American Literature (4)
ENG 241	British Literature (4)
ENG 250	Film and Formal Analysis (4)
LIT 100	Introduction to Asian Literature (4)
LIT 181	European Literature I (4)
LIT 182	European Literature II (4)

NATURAL SCIENCE AND TECHNOLOGY

BIO 104	Human Biology (4)
BIO 110	Life on Earth (4)
BIO 111	Biology I (4)
BIO 113	Biology II (4)*
CHM 104	Introduction to Chemical Principles (4)*
CHM 144 & 147	General Chemistry I & General Chemistry Lab I (5)*
EGR 240	Introduction to Electrical and Computer Engineering (4)*
EGR 250	Introduction to Thermal Engineering (4)*
GEO 106	Earth Science/Physical Geography (4)

HS 201	Health in Personal and Occupational Environments (4)**
LIN 182	Language and the Brain (4)**
PHY 101 & 110	General Physics I & General Physics Lab I (5)*
PHY 104	Astronomy: The Solar System (4)
PHY 105	Astronomy: Stars and Galaxies (4)
PHY 106	Earth Science/Physical Geography (4)
PHY 115	Energy (4)
PHY 120	The Physics of Everyday Life (4)
PHY 151 & 110	Introductory Physics I & General Physics Lab I (5)*
SCI 100	Physical Sciences in Life, the World and Beyond (4)*

SOCIAL SCIENCE

AN 101	Human and Cultural Evolution (4)
AN 102	Culture and Human Nature (4) (OR meets Global Perspective)
COM 287	Media and Social Identity (4)
ECN 150	Economics in Today's World (4)
ECN 200	Principles of Macroeconomics (4)*
ECN 201	Principles of Microeconomics (4)*
ECN 202	Principles of Global Macroeconomics (4)* (OR meets Global Perspective)
ECN 210	Principles of Economics (6)
PS 100	Introduction to American Politics (4) (AND meets U.S. Diversity)
PS 114	Issues in World Politics (4) (OR meets Global Perspective)
PS 131	Comparative Politics (4) (OR meets Global Perspective) †
PSY 100	Foundations of Contemporary Psychology (4)
PSY 130	Positive Psychology (4)
SOC 100	Introduction to Sociology (4) (AND meets U.S. Diversity)
SOC 206	Self and Society (4)
WGS 200	Introduction to Women and Gender Studies (4) (AND meets U.S. Diversity)

WESTERN CIVILIZATION

HST 101	Introduction to European History Before 1715 (4)
HST 102	Introduction to European History Since 1715 (4)
HST 114	Introduction to American History Before 1877 (4) (AND meets U.S. Diversity)
HST 115	Introduction to American History Since 1877 (4) (AND meets U.S. Diversity)
HST 210	Science and Technology in Western Culture
HST 292	History of the African-American People (4) (AND meets U.S. Diversity)
LBS 100	Exploration of the Arts and Sciences (4)
MGT 235	Commerce in Western Civilization (3)
PHL 101	Introduction to Philosophy (4)
PHL 103	Introduction to Ethics (4)
PHL 104	Introduction to Ethics in Science and Engineering (4)

HONORS COLLEGE

HC 201	Arts (4)
HC 202	Literature & Writing Intensive in General Education (4)*
HC 204	Western Civilization (4)
HC 205	Global Perspective (4)
HC 206	Social Science (4)
HC 207	Formal Reasoning (4)
HC 208	Natural Sciences and Technology (4)

Bolded courses satisfy more than one general education requirement.

** Check catalog for prerequisite.*

*** Elementary education students should not take this course.*

† Also meets Writing Intensive in Gen Ed.

All courses listed are accurate as of April 2015. Consult the Undergraduate Catalog for more information.

REGISTERING FOR CLASSES USING MYSAIL

1. Open a web browser and go to oakland.edu.
2. Select MySAIL and log in using your NetID and password.
3. Select “Register for Classes.”
4. Select “Look-up Classes to Add.”
5. Select the term you are registering for and click “Submit.”
6. Select “Advanced Search.”
7. Select the subject (example: “CHM Chemistry”).
8. Type in the course number (example: “144”).

The screenshot shows a search form with the following fields and options:

- Course Number:** [Text input field]
- Title:** [Text input field]
- Schedule Type:** [Dropdown menu with options: All, Applied Music, Clinical]
- Credit Range:** [Text input field] hours to [Text input field] hours
- Campus:** [Dropdown menu with options: All, Internet, Macomb]
- Attribute Type:** [Dropdown menu with options: Gen Ed Foreign Lang & Culture, Gen Ed Formal Reasoning, Gen Ed Global Perspective]

Looking for general education courses? Highlight all of the subjects. Find the “Gen Ed” category you are searching for within the attribute type, then continue to step 9.

9. Select a campus:
 - Main Campus (Rochester)
 - Mount Clemens (Anton/Frankel Center)
 - Macomb (Macomb University Center) - Clinton Township
10. Select “Section Search” at the bottom when all criteria has been entered.

Registration tip: Only register for 100- and 200- level classes.

Class selection tip: Select the CRN to view the Class Schedule Listing, which provides further detail on the course, including prerequisites required, class instruction type and location of the course.

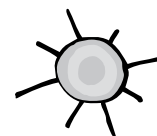
11. Once you have decided on a section, check the box next to the CRN and select “Register.” If there is a “C” or no box next to the CRN, the course is closed and not available for registration.
12. Scroll down the page to review your course selections to ensure you have no registration errors, which would appear directly above the Add Classes Worksheet.
13. To add another course, select “Add Courses” and view additional courses.
14. Once you have successfully registered for all courses, select the back arrow on the top of the screen.
15. Select “Student Schedule by Day and Time” or “Student Detail Schedule” to view your schedule.
16. Select “Sign Out” in the upper right corner to log out of MySAIL.

It is important to speak with your FYAC adviser if you are considering dropping or adding a course.

Registration Waitlist Instructions

1. Select “Look up Classes to Add.”
2. If the class section has a waitlist, you will see numbers in the columns marked WL Cap, WL Act and WL Rem.
 - a. WL Cap: Maximum number of names allowed on the waitlist.
 - b. WL Act: Number of names already on the waitlist.
 - c. WL Rem: Number of spots remaining on the waitlist.
3. If you find a class with a waitlist that you want to add yourself to, write down the CRN number.
4. You can add yourself to the waitlist by clicking “Add to Worksheet” and typing in the CRN.
5. Click “Submit Changes.”
6. You will receive a “Registration Add Error.”
7. In the action pull down list, choose “Wait-listed” and click “Submit Changes.”
 - a. If you leave the action as none, you will not be added to the waitlist.
8. If a space becomes available in the class, an email will be sent to your OU email address which indicates that you have 24 hours to register for the course. If you do not register within 24 hours, the available space will be given to the next person on the list.

Note: Adding to a course waitlist does not guarantee entry into that course. Make sure that you have a full schedule in case a spot does not become available. Also, the waitlist option is only available during the online add/drop period through the first week of classes, when you do not need instructor's permission to add into a course.



Schedule Planning Worksheet

Semester _____

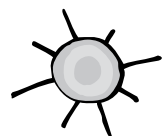
COURSE REFERENCE NUMBER	SUBJECT & COURSE NUMBER	CREDITS	DAYS	TIME	LOCATION

MONDAY	TUESDAY	WEDNESDAY	THURSDAY	FRIDAY
8:00-9:07	8:00-9:47	8:00-9:07	8:00-9:47	8:00-9:07
9:20-10:27	10:00-11:47	9:20-10:27	10:00-11:47	9:20-10:27
10:40-11:47	10:00-11:47	10:40-11:47	10:00-11:47	10:40-11:47
Noon-1:07	Noon-1:00	Noon-1:07	Noon-1:00	Noon-1:07
1:20-2:27	1:00-2:47	1:20-2:27	1:00-2:47	1:20-2:27
2:40-3:47	3:00-4:47	2:40-3:47	3:00-4:47	2:40-3:47
4:00	3:00-4:47	4:00	3:00-4:47	4:00
5:00	5:00	5:00	5:00	5:00
6:30	6:30	6:30	6:30	6:30
7:00	7:00	7:00	7:00	7:00
8:00	8:00	8:00	8:00	8:00
9:00	9:00	9:00	9:00	9:00
10:00	10:00	10:00	10:00	10:00

Schedule Planning Worksheet _____ Semester

COURSE REFERENCE NUMBER	SUBJECT & COURSE NUMBER	CREDITS	DAYS	TIME	LOCATION

MONDAY	TUESDAY	WEDNESDAY	THURSDAY	FRIDAY
8:00-9:07	8:00-9:47	8:00-9:07	8:00-9:47	8:00-9:07
9:20-10:27	10:00-11:47	9:20-10:27	10:00-11:47	9:20-10:27
10:40-11:47	Noon-1:00	10:40-11:47	Noon-1:00	10:40-11:47
Noon-1:07	1:00-2:47	Noon-1:07	1:00-2:47	Noon-1:07
1:20-2:27	3:00-4:47	1:20-2:27	3:00-4:47	1:20-2:27
2:40-3:47	5:00	2:40-3:47	5:00	2:40-3:47
4:00	6:30	4:00	6:30	4:00
5:00	7:00	5:00	7:00	5:00
6:30	8:00	6:30	8:00	6:30
7:00	9:00	7:00	9:00	7:00
8:00	10:00	8:00	10:00	8:00
9:00		9:00		9:00
10:00		10:00		10:00



CLOSING ACTIVITY

As a newly registered student, we want to ensure you have information that is essential to your success. Not only is it important, but it is expected that you understand the following items:

1. Fall classes begin on _____ at _____ a.m.
2. To be considered full time, I must register for at least _____ credits.
3. Last day to add a fall class without instructor's permission is _____.
4. Last day to drop a fall class for a 100% refund is _____.
5. Last day to withdraw from a fall class is _____.
6. If I've taken a class at another college/university, I need to submit my transcripts to _____.
7. Fall bill due date is* _____.
8. First day to submit FAFSA for 2016-17 is _____.
9. Students who are accused of academic dishonesty will have to adhere to the student judicial process with the Dean of Students Office. _____ and _____ are two examples of academic dishonesty as outlined in the Student Code of Conduct.

*Students need to understand the consequences of not keeping their student account in good financial status. Read and become familiar with the terms and conditions of Student Business Services available at oakland.edu/sbs/terms.

ORIENTATION PART TWO

Orientation Part Two is a required event for all first-year students. The program will include academic open houses, New Student Convocation and the Involvement Fair. You will have the opportunity to connect with other incoming students in your major, mingle with student leaders, meet faculty and administrators in your school or college, and be welcomed by OU's president.

Confirm your attendance for Orientation Part Two by visiting oakland.edu/part2. If you have any questions, please contact Orientation and New Student Programs at gold@oakland.edu or (248) 370-GOLD. We can't wait to see you there!

**SAVE THE DATE FOR
ORIENTATION PART TWO ON
WEDNESDAY,
AUGUST 31, 2016!**





Fall (September - October)

Participate in Welcome Week activities (18)

Participate in one campus activity or organization throughout the semester (28)

Attend New Student Orientation Part Two on August 31, 2016 (16)

Make changes to your fall schedule by September 8 without instructor's permission (13)

Pay your OU bill in full by September 22 or sign up for a payment plan (27)

Complete the FAFSA for 2017-18 (fafsa.gov) (26)

Schedule/attend fall required appointment in FYAC by the deadline (18)

(November-December)

Attend Student Leader Recruitment Fair and participate in activities through March (oakland.edu/fyac/studentleader)

Research major/career decisions (18)

Review winter semester financial aid

- Ensure your expected enrollment on MySAIL's financial aid matches the number of credits for which you are actually enrolled
- Complete outstanding requirements (26)
- Submit a revision form to make changes to your awards or housing plans

Schedule/attend fall required appointment in FYAC, if not already done so (18)

Withdraw from fall classes by November 3 (7)

Verify that you are on track to completing 28 credits and establishing a strong GPA for major and scholarship requirements

View fall grades in MySAIL

Getting the Most Out of Your Advising Experience

- Accept responsibility for decisions. Your adviser can present options, but the decisions are yours to make.
- Maintain copies of academic records, including grade reports, program plans, general education requirements, add/drop forms and transfer credit evaluations. Keep these in an advising folder.
- Prepare a list of questions or concerns before seeing your adviser. Have a tentative schedule ready if you are preparing to register for classes.
- Take the initiative to meet with your adviser regularly to monitor progress toward graduation.
- Get to know your adviser and let the adviser get to know you. If you find yourself in academic difficulty or need help adjusting to college life, your adviser can be instrumental in facilitating your success.

LEGEND



Required



Deadlines



Opportunities



Progress check



More information available on this page



FALL

Fall

(September – December)



Table of Contents

Time Management.....	page 17
Campus Academic Resources.....	page 17
Fall Advising Appointment.....	page 18
First Year Writing, Syllabus and Studying.....	page 19
Establishing a Relationship with a Faculty Adviser or Mentor	page 20
Progress to Degree.....	page 20

TIME MANAGEMENT

First-year students who enroll in 14 or more credits during their first semester are more likely to return to OU in subsequent semesters and graduate at a faster rate.

High School Example:

30 hours in class
 + 10 hours homework
 = 40 hours per week

College Example:

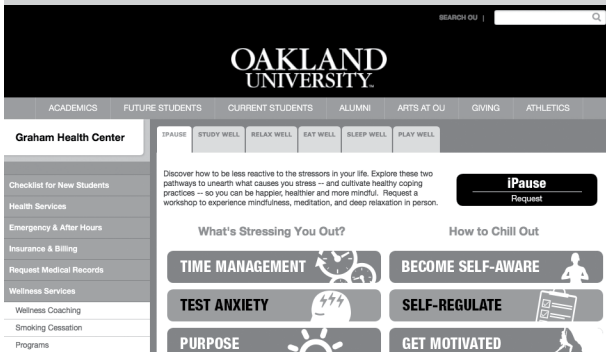
16 hours in class*
 + 32 hours self study
 = 48 hours per week

* 12 credits per semester is considered full time for undergraduate students.

College + Work Example:

16 hours in class*
 32 hours self study
 + 15 hours working
 = 63 hours per week

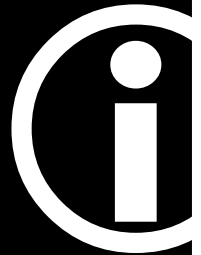
(Source: Office of Institutional Research OU Databook)



Did you know there are 168 hours in a week? Ever wonder where yours go? Check out oakland.edu/ghc/ipause to find out where you spend your time!



CAMPUS ACADEMIC RESOURCES



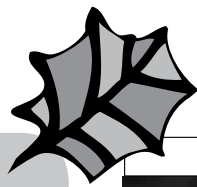
THE TUTORING CENTER
 (academic tutoring is also available in the residence halls)
oakland.edu/tutoring

THE WRITING CENTER
oakland.edu/ouwc

UNDERGRADUATE CATALOG
oakland.edu/catalog

DEGREE CHECKLIST AND FOUR-YEAR PLANS
oakland.edu/advising

ACADEMIC PEER MENTORS
 (for students living on campus)
oakland.edu/housing/ouapm



WELCOME WEEK

**AUGUST 31 –
SEPTEMBER 10, 2016**

- Pig roast and carnival
- Grizz Fest - student and Greek organizations, club sports, community businesses and volunteer fair
- BBQs, movies, bonfires, open houses, free food and t-shirts and much more!



MARK YOUR CALENDARS!



FALL HOMECOMING & REUNION WEEKEND

**SEPTEMBER
23 - 25, 2016**

FALL APPOINTMENT WITH YOUR FYAC ADVISER

During your required fall FYAC appointment, several important topics will be covered.

- Your transition to the university — including how you are getting involved on campus and how your classes are going.
- Your intended major and related opportunities.
- If you're unsure of your major, ways we can assist you in exploring options.
- Resources on campus.
- Introduction to degree checklist and degree plan.

Call (248) 370-3227 to schedule an appointment.



EXPLORING MAJORS AND CAREERS

Students who are undecided about a major or who have several areas of interest can take advantage of guided major and career exploration with their FYAC adviser. Through a variety of avenues, your adviser may recommend the following:

- Completing interest and personality assessments, such as the Myers-Briggs Type Indicator (MBTI) and Strong Interest Inventory (SII)
- Utilizing online resources to research specific careers, including required education, typical tasks, salary and job outlook
- Comparing OU degree requirements to identify possible majors of interest
- Meeting with OU faculty and/or Career Services to discuss career options for majors of interest

Be open and participate fully during this process. The more effort you put into your exploration, the more confident you'll feel about your choices.

**Start exploring now at
oakland.edu/fyac/career**



FIRST-YEAR WRITING

OU's Department of Writing and Rhetoric offers first-year writing classes that help students to develop the rhetorical skills, composing processes and information literacies necessary for writing in the 21st century. We strive for engaged classroom communities where students are introduced to rhetorical strategies for writing, and we emphasize revision, rhetorical understanding and collaborative work. Our students practice community engagement, new media composing and writing in the academic disciplines.

First-year writing satisfies the general education requirement in writing foundations through the completion of *WRT 160: Composition II*. Students are placed into their first-year writing classes based on their ACT English subscores. Detailed information about placement can be found at oakland.edu/fyac/courseplacement.

All on-campus classes contain an online component to support digital literacy practices. Sections listed as MWF, TR and evening may have weekly online activities in place of on-campus meetings. Consult the course syllabus for specifics.

Sections listed as Online do not meet in person and instead have weekly online activities beginning on the first day of classes. Instructors may hold up to three optional on-campus meetings.

One week before classes begin, students can log into Moodle to find their course materials. Students should also check Moodle and OU Webmail daily throughout the semester for announcements and updates.

For more information on first-year writing, visit oakland.edu/wrt and select "First Year Writing and Rhetoric."

YOUR SYLLABUS

Every course taught at OU has a syllabus, which serves as a road map for the course and typically contains the following information:

- Instructor contact information and office hours
- What you can expect to learn in the course (commonly referred to as course objectives or learning outcomes)
- Required and optional textbooks
- Required assignments and extra credit options, if available
- Timeline of the course, including assignment and reading due dates and exam dates
- Grading scale and points available for each assignment and test
- Policies, such as class attendance and academic integrity

You should read each syllabus closely and list all important dates on your calendar. Always keep your syllabus close by for reference.

STUDYING IN COLLEGE

You will be expected to spend a lot of self-directed time studying for your college courses, which can be different than high school. Many students find themselves overwhelmed by the amount of studying that must be done in order to do well in college, so we want you to start off on the right foot.

In your classes, you may have hand-written notes from class, textbook, accompanying websites, professor-provided study guides and other required readings or materials. This can be daunting. Our advice is to use only what you absolutely need to create your own study guides a little each day. A slow and steady commitment to reviewing before and after every class means that you'll never have to cram, and that you're best prepared to proactively participate in classroom discussions and lectures. We recommend studying one subject for no longer than 20 minutes at a time. That's three subjects per hour. Do that three times a day while using effective study strategies, and it can help you be prepared.

Additionally, OU offers excellent out-of-class support for students interested in studying more effectively. The Tutoring Center, Writing Center, Kresge Library, and First Year Advising Center workshops are wonderful resources for learning how to be more efficient at studying. Remember, very few people learned how to study effectively during high school, but this skill is critical to success in college.



Moodle is an online learning management system that allows instructors to design entire courses online or to enhance a classroom-based course. Each course is uniquely designed by instructors who may include some of the following components: syllabus, course material or content, assignments, quizzes and self-tests, discussion board, and student progress tracking. To access your Moodle account, visit moodle.oakland.edu and log in with your NetID and password.

ESTABLISHING A RELATIONSHIP WITH A FACULTY ADVISER OR MENTOR

OU's faculty members are incredible resources for students who reach out and make connections with them in meaningful ways. They are experts in their academic disciplines and can offer advice about opportunities at OU and in the academic community. Early in your collegiate career, identify a faculty adviser or mentor and get to know them. These questions may help get the conversation started:

- What advice would you give someone who is thinking about pursuing this field?
- What are the pros and cons of this field?
- Do I need to go to graduate school to get a job in this field?
- Do I need an internship? What kind of internships do you recommend?
- Should I do research? How do I find out about research opportunities at OU?
- What professional/student organizations would I benefit from joining?

Undergraduate students have the opportunity to participate in high-level research projects with expert faculty. Visit the Center for Undergraduate Research and Leadership at oakland.edu/hc/research for more information.



PROGRESS TO DEGREE

Oakland University's Progress to Degree feature in MySAIL makes it easier for students to stay on track for graduation by:

- Determining progress toward degree
- Selecting correct courses at registration
- Running what-if scenarios to find out how current courses would apply to a change of program

Evaluate your progress by following these steps:

- Go to oakland.edu and click MySAIL
- Log in using your NetID and password
- Select "Progress to Degree" in the Oakland Services box



Winter (January – April)

Review the summer financial aid information to determine eligibility for summer aid. If eligible, submit application (oakland.edu/financialservices/summer)

Submit housing contract for 2017-18 (36)

Participate in Student Leader Recruitment process (oakland.edu/fyac/studentleader)

Participate in one campus activity or organization throughout the semester (28)

Apply for summer jobs

Apply for scholarships

Schedule/attend winter required appointment in FYAC (21)

Make changes to your winter schedule by January 11 without instructor's permission (13)

Pay your OU bill in full by January 25 or sign up for a payment plan (27)

Winter (March – April)

Schedule/attend winter required appointment in FYAC, if not already done so (21)

Withdraw from winter classes by March 15 (7)

Update 2017-18 FAFSA with accurate tax information (fafsa.gov)

Register for second year (13)

Verify employment for next year

Verify that you have completed 28 credits and established a strong GPA for major and scholarship requirements

View winter grades in MySAIL

Getting the Most Out of Your Advising Experience

- Accept responsibility for decisions. Your adviser can present options, but the decisions are yours to make.
- Maintain copies of academic records, including grade reports, program plans, general education requirements, add/drop forms and transfer credit evaluations. Keep these in an advising folder.
- Prepare a list of questions or concerns before seeing your adviser. Have a tentative schedule ready if you are preparing to register for classes.
- Take the initiative to meet with your adviser regularly to monitor progress toward graduation.
- Get to know your adviser and let the adviser get to know you. If you find yourself in academic difficulty or need help adjusting to college life, your adviser can be instrumental in facilitating your success.

LEGEND

- Required
- Deadlines
- Opportunities
- Progress check
- More information available on this page

Participate in Second Year Experience (oakland.edu/advising/sye)



Table of Contents

Winter Advising Appointment..... page 21

Coursework Elsewhere page 21

Schedule Planning Worksheet.....pages 22-23

WINTER APPOINTMENT WITH YOUR FYAC ADVISER

Winter appointments are completed during the first three months of the winter semester. Be sure to schedule early to ensure you meet with your adviser before registering for your second year. Some of the discussion points with your adviser will include:

- Understanding your progress academically and the process for scheduling
- Helping you choose courses from your degree checklist and degree plan for your second year schedule
- Participating in the Second Year Experience (SYE) — Your transition to your school or college academic advising unit

Come prepared for your appointment — review your degree checklist and degree plan prior to attending. Bring a selection of courses so your adviser can assist with recommendations for course scheduling. Use the worksheet at oakland.edu/fyac/appointments to prepare your course selections.

COURSEWORK ELSEWHERE

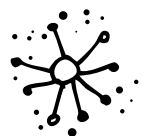
You may be interested in taking a few courses at another college or university as a “guest student” during your time at OU. Most students who choose this option do so during the summer when they may be living at home and have access to a community college close by. There are limits on the number of credits you can take at other institutions. Be sure to consult with your FYAC adviser before registering for non-OU courses to ensure you are selecting courses that will transfer back to OU and assist you in meeting your degree requirements. To download the Michigan Uniform Undergraduate Guest Application, visit oakland.edu/summer/guest.



Schedule Planning Worksheet _____ Semester

COURSE REFERENCE NUMBER	SUBJECT & COURSE NUMBER	CREDITS	DAYS	TIME	LOCATION

MONDAY	TUESDAY	WEDNESDAY	THURSDAY	FRIDAY	
8:00-9:07	8:00-9:47	8:00-9:07	8:00-9:47	8:00-9:07	
9:20-10:27	10:00-11:47	9:20-10:27	10:00-11:47	9:20-10:27	
10:40-11:47				10:40-11:47	
	Noon-1:00		Noon-1:00		
Noon-1:07					Noon-1:07
	1:00-2:47		1:00-2:47		
1:20-2:27					1:20-2:27
2:40-3:47	3:00-4:47	2:40-3:47	3:00-4:47	2:40-3:47	
4:00				4:00	
	5:00		5:00		
5:00					5:00
	6:30		6:30		
6:30					6:30
7:00	7:00	7:00	7:00	7:00	
8:00	8:00	8:00	8:00	8:00	
9:00	9:00	9:00	9:00	9:00	
10:00	10:00	10:00	10:00	10:00	



Schedule Planning Worksheet

Semester

COURSE REFERENCE NUMBER	SUBJECT & COURSE NUMBER	CREDITS	DAYS	TIME	LOCATION

MONDAY	TUESDAY	WEDNESDAY	THURSDAY	FRIDAY
8:00-9:07	8:00-9:47	8:00-9:07	8:00-9:47	8:00-9:07
9:20-10:27	10:00-11:47	9:20-10:27	10:00-11:47	9:20-10:27
10:40-11:47		10:40-11:47		10:40-11:47
Noon-1:07	Noon-1:00	Noon-1:07	Noon-1:00	Noon-1:07
1:20-2:27	1:00-2:47	1:20-2:27	1:00-2:47	1:20-2:27
2:40-3:47	3:00-4:47	2:40-3:47	3:00-4:47	2:40-3:47
4:00		4:00		4:00
5:00	5:00	5:00	5:00	5:00
6:30	6:30	6:30	6:30	6:30
7:00	7:00	7:00	7:00	7:00
8:00	8:00	8:00	8:00	8:00
9:00	9:00	9:00	9:00	9:00
10:00	10:00	10:00	10:00	10:00

Schedule Planning Worksheet _____ Semester

COURSE REFERENCE NUMBER	SUBJECT & COURSE NUMBER	CREDITS	DAYS	TIME	LOCATION

MONDAY	TUESDAY	WEDNESDAY	THURSDAY	FRIDAY	
8:00-9:07	8:00-9:47	8:00-9:07	8:00-9:47	8:00-9:07	
9:20-10:27	10:00-11:47	9:20-10:27	10:00-11:47	9:20-10:27	
10:40-11:47				10:40-11:47	
Noon-1:07	Noon-1:00	Noon-1:07	Noon-1:00	Noon-1:07	
1:20-2:27	1:00-2:47	1:20-2:27	1:00-2:47	1:20-2:27	
2:40-3:47	3:00-4:47	2:40-3:47	3:00-4:47	2:40-3:47	
4:00				4:00	
5:00	5:00	5:00	5:00	5:00	
6:30	6:30	6:30	6:30	6:30	
7:00	7:00	7:00	7:00	7:00	
8:00	8:00	8:00	8:00	8:00	
9:00	9:00	9:00	9:00	9:00	
10:00	10:00	10:00	10:00	10:00	





IMPORTANT RESOURCES

Student Financial Services	pages 25-27
Campus Involvement	page 28
Building a Better You	page 29
University Housing and Campus Dining	pages 30-31
Technology	pages 32-33
Kresge Library	page 34
Dean of Students and FERPA	page 34
University Departments and Services	pages 35-36
Focus on the Finish Line	page 37
Notes	page 38

STUDENT FINANCIAL SERVICES

Offering a host of financial services in one location

Investing in a college education is priceless. The knowledge students gain now will help shape the professional and personal decisions they'll make in the future.

Student Financial Services provides OU students with one location to take care of financial related business, including financial aid, student employment, billing, payment plans, direct deposit and financial aid refunds.

Students and their proxies can view financial aid award and unsatisfied financial aid requirements in MySAIL.

Answers to most student account questions are available through OU's eStatements system. Students and authorized users can view student account activity, pay their bill and enroll in a payment plan. For more information about eStatements, visit oakland.edu/ebill.

Experienced professional staff is available to offer assistance with:

- Financial assistance information
- Free Application for Federal Student Aid (FAFSA)
- Application processing of OU, federal, state and private aid
- Private education loans
- Payment plans
- On-campus student employment
- Processing scholarship checks from external agencies and corporate vouchers
- Billing questions
- Refund questions
- Direct deposit

Mailing Address Updates

Make sure to notify OU of any changes to your current or permanent address by updating your address on MySAIL. See page 3 for directions.

Contact Information

Student Financial Services
North Foundation Hall, Room 120
318 Meadow Brook Road
Rochester, MI 48309-4401
(248) 370-2550
finservices@oakland.edu
oakland.edu/financialservices



EXTERNAL SCHOLARSHIPS

Michigan Education Trust

Notify Michigan Education Trust (MET) that the student is attending Oakland University by calling (800) MET-4-KID. MET will provide the student's accumulated credits or dollar amounts to OU, and OU will credit the student's account before the next bill is due.

Private Scholarship Checks and Vouchers

If a student receives a scholarship check or tuition voucher, it needs to be sent to Office of Student Financial Services, North Foundation Hall, Room 120, 318 Meadow Brook Road, Rochester, MI 48309-4401. The check and voucher should include the student's name and Grizzly ID. If the check is co-payable to the student and OU, the student should first endorse the check by writing on the back, "Payable to Oakland University" and then provide the student signature. To ensure timely processing, it is important to submit the scholarship check or tuition voucher as soon as it is received.

Financial Assistance

Application: Complete the Free Application for Federal Student Aid (FAFSA) at fafsa.gov and authorize the IRS to include income information on the application through IRS Data Retrieval. Include OU's school code of 002307 on the application. Students automatically qualify for OU scholarships based on admission to OU and establish their eligibility for grants by completing the FAFSA.

Award Notifications: Oakland University sends first-time freshman students a paper financial aid award notification. Students are notified to view MySAIL for subsequent award information through their OU email address.

Financial Aid Requirements: Students need to carefully review financial aid requirements on MySAIL. Many students are required to provide OU with additional information. Some awards require additional action by the student and/or parent. It is important for the student or parent to respond promptly since some award requirements have due dates. Financial aid requirements are due within 21 days, unless otherwise indicated.

Policies and Conditions of Financial Aid: Read and become familiar with the Policies and Conditions of Financial Aid at oakland.edu/financialservices/policies.

Terms and Conditions of Student Business Services

Read and become familiar with the terms and conditions of Student Business Services available at oakland.edu/sbs/terms.

Tuition Rates and Billing Information

Tuition is assessed based on the student's class standing, residency and the number of credits enrolled. OU notifies students of their bill through the eBill electronic billing process. The eBill notification is sent to the student's OU email address. Available financial aid will appear as a credit on the eBill if the student has satisfied all requirements. Failure to receive a bill does not excuse students from making the required payment on the due date. Tuition is payable in U.S. currency. For more information on student bills and payment information, visit oakland.edu/ebill.

eBill

The eBill system offers students the ability to:

- View billing account activity
- Sign up parents, spouses and others as authorized users (visit oakland.edu/ebill for viewing instructions)
- Make payments
- Enroll in a payment plan

To access the eBill system go to oakland.edu/ebill.

How to Pay

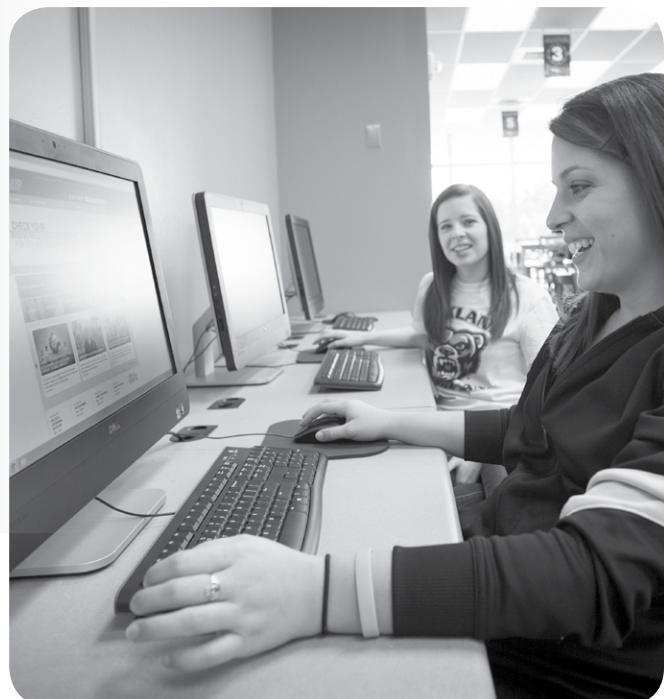
Payments can be made electronically through eBill or in person at the Student Financial Services cashier's window, North Foundation Hall, Room 120. Returned payments (checks, credit card, debit card or online payments) will be charged a \$25 returned item charge. Payments returned by the bank will be considered nonpayment and may result in cancellation of registration. Payments must be made in U.S. currency.

MYSAIL FINANCIAL AID OVERVIEW

Student Services & Financial Aid in MySAIL provides students with access to their financial aid award information, requirements, eligibility, holds and direct deposit. For instructions and information about each area, visit oakland.edu/financialservices/award-status.

Students can view their financial aid information online through MySAIL by following these steps:

1. Go to mysail.oakland.edu
2. Log in using your NetID username and password
3. Select "Financial Aid" in the Oakland Services box



OU Payment Plan

Enroll in an OU Payment Plan and spread tuition and on-campus housing charges into several smaller payments. OU will waive the \$25 payment plan processing charge if students or authorized users schedule installment payments using one of the following payment options: checking or savings account, debit card or credit card. For more information or to enroll online, visit oakland.edu/paymentplan.

Third-Party Billing

Oakland University accepts vouchers from most employers and other sponsors. Vouchers must be received by the bill due date. For more information regarding third-party billing, visit oakland.edu/thirdpartybilling.

Late Payment Penalty

Avoid a 1.5 percent late payment penalty by paying the bill by the due date. If students are expecting to obtain financial aid to pay the bill and financial aid is not reflected on the bill, students must pay the bill by the due date. Common reasons why financial aid is not on the bill notification are: the student did not yet apply for financial aid, recently applied for financial aid, did not complete financial aid requirements or recently submitted financial aid requirements. It is important to submit requirements by their due date and provide Student Financial Services with adequate processing time.

De-registration Policy

Students who have a past due balance from a prior semester will be taken out of their future semester registered courses. Students will be required to re-enroll for classes based on class availability if they correct their financial standing by paying the past due balance from the prior semester(s) in full. To stay in good financial standing, please pay all OU bills on or before their due dates. For more information, visit oakland.edu/deregistration.

Student Employment

Many university departments hire students. Students can view current student employment positions online at oucareerlink.com. Departments may require Federal College Work-Study eligible students. Federal College Work-Study awards are listed on the student award notification if the student is eligible.

Direct Deposit

Direct deposit is available for student account refunds, financial aid refunds and student paychecks. For more information or to sign up, visit oakland.edu/directdeposit.



EBILL OVERVIEW FOR STUDENTS AND AUTHORIZED USERS

The eBill system offers students and authorized users the ability to view billing account activity, make payments, enroll in payment plans and view billing statements. To access eBill, visit oakland.edu/ebill and log in with the following information:

- Students log into eBill using their Grizzly ID and PIN
- Authorized users log into eBill using their email and password

Once in eBill, select a category from the top menu bar to access the following:

My Account: Brief overview of the current amount due, active payment plans and the most recent statement. From this page, you can view account activity for a specific semester, update personal profile information,

create and view a saved method of payment, and provide eBill access to a parent, spouse or others.

Payments: Displays the last statement amount and the current amount due, which includes recent charges and payments. Also displayed are any charges not covered by a payment plan. From this page, you can make a payment and view payment history.

Payment Plans: Guides you through the steps to enroll in a payment plan.

eStatements: Allows the student and authorized user to view billing statements for a student's account.

CAMPUS INVOLVEMENT

Students are strongly encouraged to get involved in out-of-classroom programs, activities and events offered between classes, in the evening and on the weekends. The Center for Student Activities and Leadership Development, more popularly known as the CSA, provides students with social, educational, leadership, diversity and community service opportunities that complement their academic experience while attending Oakland University. Connect with CSA by visiting our website at oakland.edu/csa, emailing our office at csa@oakland.edu or calling us at (248) 370-2400.

Leadership and Volunteer Center

oakland.edu/csa/lead | oakland.edu/csa/volunteer

The Leadership and Volunteer Center offers a variety of leadership and service learning programs, along with resources, to assist students in developing their leadership and altruistic capabilities for application within their academic, professional and personal communities.

Gender and Sexuality Center

gsc@oakland.edu

The Gender and Sexuality Center provides and fosters a campus environment that promotes inclusion and understanding around issues of gender and sexuality through education, outreach and advocacy for all members of the OU community.

- S.A.F.E. On Campus (Students, Administrators and Faculty for Equality)
- LGBTIQA resources
- Women's resources
- Sexual well-being resources

Student Resource Center

- Computers, TV and lounge area
- Printing for student and Greek organizations
- Mini-conference room

CSA Service Window

(248) 370-4407 | csasw@oakland.edu

oakland.edu/servicewindow

- Ticket sales
- Event sign-ups
- Stamps and faxes
- Music, Theatre and Dance ticket sales

CSA Office Hours

Monday-Thursday 8 - 6:30 p.m.

Friday 8 - 5 p.m.



Explore more than 275 student organizations, club sports and Greek fraternities and sororities, including:

- Student Congress (OUSC) - oakland.edu/ousc
- Student Program Board (SPB) - oakland.edu/spb
- Student Activities Funding Board (SAFB) - oakland.edu/safb
- Student Video Productions (SVP) - oakland.edu/outv/svp
- Student Life Lecture Board (SLLB) - oakland.edu/sllb
- The Oakland Post - oaklandpostonline.com
- WXOU 88.3 FM - wxou.org
- Club Sports - oakland.edu/campusrec/clubs

To find out more, visit oakland.edu/grizzorgs

How to Activate Your GrizzOrgs Account

1. Open a Web browser and go to oakland.edu/grizzorgs.
2. Log in using your NetID and password.
3. Once submitted, you will be prompted to create your GrizzOrgs account.
4. Fill out all of the information on the first page.
5. If you would like to upload a profile picture, select "Upload Picture" and select the proper file.
6. When you have completed the first page, select "Next" and fill out the required information on the second page.
7. When you have completed the second page, select "Finish."
8. Your account has been successfully created.
9. Click "Browse Organizations" to see what student organizations OU currently offers!



LIVE WELL. BE WELL.

Are you getting enough sleep, eating right, exercising, and managing your stress? In order to achieve academic and personal growth you make choices every day that impacts your life. OU offers a campus wide approach to health and well-being so that making smart, healthy choices is easier.

Graham Health Center, OU Counseling and University Recreation and Well-Being work together and with other campus departments to provide you with the resources and services to help you thrive.

Your choices shape your life. Make positive, healthy choices today to build a better YOU!

Graham Health Center

oakland.edu/ghc (248) 370-2341

- Complete health services, including physical exams, immunizations, sick care, minor injuries and women's health care. Most insurances plans accepted.
- Over-the-counter medications available
- Educational workshops on topics including men and women's health, prevention and disease management

OU Counseling Center

oakland.edu/oucc (248) 370-3465

- Personal confidential counseling (first six sessions free)
- Diagnostic testing for identification and understanding of learning disabilities and ADHD
- Substance abuse evaluation and prevention

University Recreation and Well-Being

oakland.edu/campusrec (248) 370-4732

- Access to the facility, programs and services each semester with one paid credit hour
- Current Grizz ID used for entry to facilities*
- Wellness workshops including iPause, EnergYou and Nutrition 101

*Some programs/services are fee-based and are not included with access.



WELL-BEING TIPS

- Eat well
- Sleep better
- Be active
- Connect with friends and family
- Skip dessert
- Laugh a lot
- Take a breath
- Play club sports
- Be curious
- Manage your time
- Make a budget

UNIVERSITY HOUSING STAFF AND SUPPORT SERVICES



University Housing offers a safe and supportive environment for all students who live on campus. First-year students don't have to live on campus, but we love it when they do! There are many opportunities for academic, personal and social enrichment through these special residential programs and services.

Residence Directors

Residence Directors (RDs) are full-time, professional staff members who oversee the welfare and operations of a University Housing residence hall or apartment complex. With the support of a graduate assistant, RDs provide supervision for their student staff members, including resident assistant, apartment community assistant, desk and Nightwatch staffs. They also work to enforce University Housing expectations and procedures.

Graduate Residence Directors

Working to support the residence director in their assigned residence hall or apartment complex, University Housing graduate residence directors provide day-to-day supervision of undergraduate staff members, and oversee the creation and implementation of enriching programming for the members of their communities.

Resident Assistants

Resident Assistants (RAs) live in the residence halls where they advise and counsel students living on their assigned floor and actively encourage a positive residential environment. They offer students advice and guidance in academic, social and financial matters, and handle several administrative duties. They also help residents become acquainted with the university and residence halls community.

Nightwatch

Nightwatch student security staff is stationed at each entrance of the residence halls from 8 p.m. to 5 a.m., seven days a week. They ensure the safety and security of the students in the residence halls while maintaining respectable customer service. They secure residence hall buildings, confirm those who are entering are students living in the residence halls, and help to sign in guests of residents.

Student Success Assistant

The Student Success Assistant (SSA) works to improve students' academic success by providing information on tutoring, supplemental instruction, study skills and various academically driven programs and workshops. Students living on campus may be required to meet with the SSA if they have been referred for academic concerns, but are also encouraged to stop in for assistance if they find themselves struggling on a particular assignment or course.

Academic Tutoring Services

Tutoring services are offered in the residence halls to bring academic support directly to students. Both residential and commuting students can receive tutoring Monday through Thursday, and take advantage of multi-subject tutor nights throughout the semester.

Academic Peer Mentor Program

Academic peer mentors (APMs) reside in the residence halls and work to support students' academic success. APMs offer guidance through various programs and events, and are also available for individual help at any time.

House Council Members

Each residence hall has its own house council that addresses hall concerns, and plans social and educational activities for the building. Councils consist of an elected executive board and floor representatives.



UNIVERSITY HOUSING DINING OPTIONS AND PLANS

University Housing offers two dining options to students: Vandenberg Dining Hall (Vandenberg Residence Hall) and Tilly's Convenience Store. For the most up-to-date hours and menu, visit oakland.edu/housing/dining.

Board Meal Plans

Meal Plans are the total number of meals you may eat per semester. Each meal consists of a one time admittance into Vandenberg Dining Hall for breakfast, lunch, dinner or late night snack. You may also "transfer" a meal at select locations in the Bear Cave, Pioneer Food Court or at Tilly's Convenience Store up to seven times per week.

Optional Meal Plans

The following optional meal plans are available to student apartment residents, commuter students, faculty and staff.

Meal Dollars

Meal Dollars are accepted like cash in all of our dining locations. Meal Dollars are a declining balance account that works on the same principle as a debit card.

Block Plans

Per semester block plans are ideal for dining a few times a week in Vandenberg Dining Hall.



CAMPUS DINING

Chartwells Dining Services

121A Oakland Center
(248) 370-3490

Oakland University offers a variety of food options in many campus locations, including:

- Oakland Center
- Pawley Hall
- Elliott Hall
- Kresge Library
- Human Health Building
- Engineering Center

For the most up-to-date information and listing of dining options and hours of operation, visit dineoncampus.com/oakland.

All dining facilities accept Meal Plan Dollars, credit cards, cash and GrizzCa\$h.



TECHNOLOGY

Helpdesk

The mission of the Helpdesk is to provide OU students with a single point of contact for all supported services and products. The Helpdesk helps all members of the OU community connect to Internet resources and utilize Oakland's email system. They also answer general technology questions. The Helpdesk will only work on Oakland University-owned computers, but will assist with connectivity and account issues on any computer.

You can reach the Helpdesk at (248) 370-HELP (4357) or helpdesk@oakland.edu Monday through Friday, 8 a.m. to 5 p.m. The Helpdesk is located on the main floor of Kresge Library in Room 202.

Special note for residence hall students: If you live in the residence halls or student apartments and are having trouble connecting to the network, contact the Residence Hall Network Helpdesk at (248) 370-2534, wireless@oakland.edu or at 445 Hamlin Hall.

Connecting on Campus

It is recommended that students purchase laptops for use on the Oakland University wireless network. All students can connect to the Internet via GRIZZNET, a wireless network that spans multiple campus buildings and the residence halls. Residents of OU's student apartments, Hamlin Hall and Vandenberg Hall are provided an Internet connection through wired and wireless networks. To use the wireless network on campus, students need to ensure their computers have wireless capabilities (802.11b, 802.11g or 802.11n). To connect to the wired network in the student apartments, computers must contain a network card and have a Cat5 Ethernet cable.



Wireless Networking

A map of where to find wireless networking connections on campus can be found at oakland.edu/uts/network.

Depending on your wireless network card's settings, your computer may automatically join the wireless network. If not, check the SSID connection. You can do this by opening up the configuration utility that came with your wireless network card.

- If you are connecting to University Housing's wireless network, you will be connecting to one of their "grizzlies" SSIDs and will have to register your device separately from the rest of campus. Contact the Residence Halls Network Helpdesk at (248) 370-2534 for assistance.
- If you are elsewhere on campus, your SSID should be grizznet (all lowercase).

Once connected, open up a Web browser. You will be redirected to a login page. Enter your NetID and password and click "Continue" to log on to GRIZZNET.

Antivirus Software and Updates

It is your responsibility to maintain the security and patch level of your computer prior to connecting to the OU network and other university IT resources. You are strongly encouraged to invest in and install reliable antivirus software and keep virus definitions up-to-date. To ensure that your computer is always protected, configure your antivirus software to run automatically on start-up and run at all times. And remember, antivirus software is only as good as the frequency with which it is updated. Most antivirus software is easily updated online; configure your program to automatically search for and install updates. You should visit windows.microsoft.com/en-us/windows/windows-update weekly to ensure that your Windows updates are current and installed properly.



Top 10 Things You Should Know about OU's IT Policy

Your access to university resources comes with responsibilities. To keep our network safe, OU maintains a detailed computing policy that you must follow. This top 10 list provides only the highlights; read the full policy at oakland.edu/policies/890.

1. Sharing and downloading movies, music, games and software that you don't own and/or without permission of the owner is a violation of university policy, copyright law and federal law.
2. Important OU information will be delivered only to your OU email account.
3. Using email or any IT tool to harass, intimidate or bother someone is not acceptable. If someone asks you to stop, you must comply.
4. You are responsible for maintaining your computer. That means you must install antivirus software, maintain system patches and use appropriate system protection, like a firewall.
5. Limited game playing on university computers is permitted as long as it does not disrupt or limit resources for others.
6. Sharing your IDs and passwords is not a good idea; you are responsible for what happens from your account. Sharing also puts you at risk of identity theft.
7. Using the Internet for research can be useful, but copying material from websites without properly citing your sources is plagiarism. As you surf for information, keep track of the sites you visit so you can properly cite the sources in your assignment.
8. Political campaigns, commercial advertising campaigns and personal businesses cannot be run using university computing resources.
9. Use of any device capable of broadcasting a wireless signal in any manner is prohibited in all residence halls and student apartments. Desktop hubs and switches are not permitted on the Oakland University network per University Policy #850.
10. Breaking the rules can result in a variety of consequences, depending on the offense. Consequences may include disconnection from the network or referral to the dean of students for appropriate judicial processing.

Remember, it is your responsibility to understand and follow the entire IT policy. Review it at oakland.edu/policies/890.

What is the Digital Millennium Copyright Act (DMCA)?

The Digital Millennium Copyright Act (DMCA) is a federal law that was established in 1998. It criminalized the development or use of software that makes it possible for people to access materials that are copyright protected. The DMCA also makes it a criminal offense to distribute copyright protected materials.

For additional information visit the U.S. Copyright Office Summary website at copyright.gov/legislation/dmca.pdf.

What is Copyright Infringement?

Copyright infringement occurs when a person copies someone else's copyrighted items without obtaining his or her permission.

How Do I Avoid a Copyright Infringement Notice?

- DO NOT download or distribute whole copies of copyrighted material for personal use or entertainment without explicit permission from the copyright owner — it is against the law.
- DO NOT download copies of illegally distributed files to your own computer from file sharing applications. You should know that purchasing a music CD does not give you the right to distribute or share the songs on it.
- Some common Internet piracy techniques are:
 - Websites that make software available for free download or in exchange for others
 - Internet auction sites that offer counterfeit or out-of-channel software
 - Peer-to-peer networks that enable unauthorized transfer of copyrighted programs
- DO know that copyright law applies to materials that include but are not limited to: written works (eBooks, PDFs, or HTML pages); movies or television shows; music; pictures; and software in digital and analog format under copyright protection.
- DO know that it is the user's responsibility to be aware of the legal consequences for copyright infringement. Lack of knowledge about copyright infringement laws does not excuse the user from legal consequences or from actions by Oakland University.

What if I receive a Copyright Violation Notice?

A copyright violation is a violation of Oakland University policy #890— Use of University Information Technology Resources.

1. A network block is placed to prevent the individual from logging onto the (wired and wireless) network. The network block remains in place until certain steps have been completed.
2. Notification is sent to the individual with instructions on what actions are needed to reinstate network access.
3. After the block is implemented, the student should only speak to the parties identified in the letter or to the dean of students.
4. Once the outlined steps have been completed, network access will be reinstated.

More information about the Oakland University policies for sharing and downloading music and movies can be found at oakland.edu/uts/copyright.

KRESGE LIBRARY

REQUEST BOOKS/ARTICLES

Need an item not held by OU Libraries? Use MeLCat or Interlibrary Loan through OU Libraries to get books and articles sent from other libraries.

library.oakland.edu/services/materials/ill/

RESEARCH ASSISTANCE

Need help with your research? Contact your “subject specialist” librarian to schedule a one-on-one research consultation. library.oakland.edu/ask/RC/

TECHNOLOGY HELP

Get help with computing/software, scanning, printing and any other technical issues.

library.oakland.edu/services/technology/

SUZANNE O. FRANKIE CAFÉ

Featuring Peet's Coffee and Tea, this café also offers fresh fruits, bagels, doughnuts, Kresge Bars, sandwiches, soups and more.

DEAN OF STUDENTS

The Dean of Students Office performs a number of university-wide functions that promote and uphold the campus values of civility, personal integrity and academic excellence. In helping students practice these values, the Dean of Students Office creates an educationally supportive environment and protects the well-being of the campus community.

As you proceed through your college years, you will find out-of-classroom learning plays a major role in your personal and professional development. We urge you to take advantage of the many opportunities available to you to help enhance your leadership and communications skills. We guarantee your experiences will be exciting, challenging, fun and rewarding.

If you find you don't know who to contact regarding a specific issue or problem, the Dean of Students Office is a good place to start to help you contact the right staff. The Dean of Students staff are ready and willing to provide you with assistance and advice.

The Dean of Students handles all complaints against students, including those involving sexual misconduct. The Assistant Dean of Students is the Deputy Title IX Coordinator and can be contacted at (248) 370-3352 or 144 Oakland Center. If the person responding to the complaint is a university employee or third party, the Director of Inclusion (who also acts as the university's Title IX Coordinator) should be contacted at (248) 370-3496 or 203 Wilson Hall. The OU Police Department should also be contacted in all cases of sexual misconduct at (248) 370-3331 or go to the dispatch window at the PSS building to speak with an officer directly.

POPULAR READING COLLECTION

Funded by OU Student Congress, the library lends recent bestsellers on the second floor by the cafe. The titles change regularly. library.oakland.edu/collections/popular.php

GRAPHIC NOVELS COLLECTION

We also have graphic novels, comic books and comic strips in our circulating collection on the third floor.

INDIVIDUAL AND GROUP STUDY SPACES

We have plenty of study tables, laptop carrels, desktop computers and comfortable group and individual study spaces equipped with technology.

LEARN MORE

library.oakland.edu

24/7 access to Kresge Library available with valid OU ID. Remote access to library resources available using valid OU NetID.

ASK A LIBRARIAN

Online: library.oakland.edu/ask/

Email: ref@oakland.edu | Phone: (248) 370-4426

Chat: AIM | Yahoo | MSN

Or in person at the Research Help Desk



FAMILY EDUCATIONAL RIGHTS AND PRIVACY ACT (FERPA)

Confidentiality and Release of Student Records Information

Oakland University works diligently to meet our students' needs and to answer their questions. Our goal is to provide students with helpful information about the university, academic programs and social opportunities. Once students begin classes at the university, all of their records including, but not limited to, academic records, financial records, medical records, etc., are protected by the Family Educational Rights and Privacy Act (FERPA). This law forbids the disclosure of most students' record information without their written consent. FERPA, in working to protect students' privacy, can appear to be a roadblock to parents or can work as a catalyst for students and their parents to communicate about things like grades and financial information. By understanding what FERPA is, you are in a good position to discuss expectations regarding grades and financial commitments with your parents. Specific questions about FERPA should be directed to Oakland University's FERPA Officer at (248) 370-3352.



UNIVERSITY DEPARTMENTS AND SERVICES

Alumni Association

John Dodge House, Room 202
507 Golf View Lane
Rochester, MI 48309-4488
(248) 364-6130
ouaa@oakland.edu
oualumni.com

Athletics

Recreation and Athletics Center
569 Pioneer Drive
Rochester, MI 48309-4482
(248) 370-3190
grizzfan@oakland.edu
goldengrizzlies.com
twitter.com/OUGrizzlies

Barnes & Noble at Oakland University

Oakland Center, Room 28
312 Meadow Brook Road
Rochester, MI 48309-4454
(248) 370-2404
oakland.bncollege.com

Career Services

North Foundation Hall, Room 154
318 Meadow Brook Road
Rochester, MI 48309-4454
(248) 370-3250
careers@oakland.edu
twitter.com/OUcareers
facebook.com/oucareers

Cashier's Office

North Foundation Hall, Room 120
318 Meadow Brook Road
Rochester, MI 48309-4454
(248) 370-4396
cashiers@oakland.edu
oakland.edu/cashiers

Center for Multicultural Initiatives (CMI)

North Foundation Hall, Room 104
318 Meadow Brook Road
Rochester, MI 48309-4454
(248) 370-4044
cmi@oakland.edu
oakland.edu/cmi

Center for Student Activities (CSA)

Oakland Center, Room 49
312 Meadow Brook Road
Rochester, MI 48309-4454
(248) 370-2400
csa@oakland.edu
oakland.edu/csa
Service window hours:
M, T, TH, F: 9 a.m. – 5 p.m.
W: 9 a.m. – 6:30 p.m.

Chartwells Dining Services

Oakland Center, Room 121 A
312 Meadow Brook Road
Rochester, MI 48309-4454
(248) 370-3490
dineoncampus.com/oakland

Computer Help/Assistance

Kresge Library, Room 202
100 Library Drive
Rochester, MI 48309-4479
(248) 370-HELP
helpdesk@oakland.edu
oakland.edu/uts

Residence Halls Network

Help Desk
Hamlin Hall, Room 445
550 Meadow Brook Road
Rochester, MI 48309-4452
(248) 370-2534
wireless@oakland.edu
oakland.edu/housing/techsupport

Dean of Students

Oakland Center, Room 114
312 Meadow Brook Road
Rochester, MI 48309-4454
(248) 370-3352
oakland.edu/studentcodeofconduct

Disability Support Services (DSS)

North Foundation Hall, Room 103 A
318 Meadow Brook Road
Rochester, MI 48309-4454
(248) 370-3266 / (248) 370- 3268
dss@oakland.edu
oakland.edu/dss

First Year Advising Center (FYAC)

North Foundation Hall, Room 121
318 Meadow Brook Road
Rochester, MI 48309-4454
(248) 370-3227
fyac@oakland.edu
oakland.edu/fyac

Gender and Sexuality Center (GSC)

Oakland Center, Room 49D
312 Meadow Brook Road
Rochester, MI 48309-4454
(248) 370-4333
gsc@oakland.edu
oakland.edu/gsc

Graham Health Center (GHC)

408 Meadow Brook Road
Rochester, MI 48309-4452
(248) 370-2341
health@oakland.edu
oakland.edu/ghc

The Honors College

Oak View Hall, Room 210
509 Meadow Brook Road
Rochester, MI 48309-4452
(248) 370-4450
hc@oakland.edu
oakland.edu/hc

ID Card office

Oakland Center, Room 112
312 Meadow Brook Road
Rochester, MI 48309-4454
(248) 370-2291
oakland.edu/grizzcard

International Education/Study Away

North Foundation Hall, Room 160
318 Meadow Brook Road
Rochester, MI 48309-4454
(248) 370-2889
oakland.edu/ie

International Students and Scholars (ISSO)

North Foundation Hall, Room 157
318 Meadow Brook Road
Rochester, MI 48309-4454
(248) 370-3358
isso@oakland.edu
ie@oakland.edu
oakland.edu/isso

Kresge Library

100 Library Drive
Rochester, MI 48309-4479
(248) 370-4425
ref@oakland.edu
library.oakland.edu

continued on next page

UNIVERSITY DEPARTMENTS AND SERVICES

Oakland Center (OC)

Oakland Center, Room 118
312 Meadow Brook Road
Rochester, MI 48309-4454
(248) 370-2020
oakland.edu/oc

Oakland University Counseling Center

Graham Health Center, East Wing
408 Meadow Brook Road
Rochester, MI 48309-4452
(248) 370-3465
counsel@oakland.edu
oakland.edu/oucc

Orientation and New Student Programs (ONSP)

North Foundation Hall, Room 105
318 Meadow Brook Road
Rochester, MI 48309-4454
(248) 370-GOLD
gold@oakland.edu
oakland.edu/orientation

Police Department (OUPD)

Police and Support Services Building
201 Meadow Brook Road
Rochester, MI 48309-4451
911 (campus phones emergency)
201 Meadow Brook Road
Rochester, MI 48309-4451
(248) 370-3333 (cell phones emergency)
(248) 370-3337 (TTY)
(248) 370-3331 (non-emergency)
police@oakland.edu
oakland.edu/police

Registrar Services

O'Dowd Hall, Room 100
586 Pioneer Drive
Rochester, MI 48309-4482
(248) 370-3450
regservices@oakland.edu
oakland.edu/resistrar

School Closing Hotline

(248) 370-2000

Student Employment

North Foundation Hall, Room 120
318 Meadow Brook Road
Rochester, MI 48309-4454
(248) 370-2550
finservices@oakland.edu
oakland.edu/financialservices
student-employment
oucareerlink.com

Student Financial Services

North Foundation Hall, Room 120
318 Meadow Brook Road
Rochester, MI 48309-4454
(248) 370-2550
finservices@oakland.edu
oakland.edu/financialservices

Student Technology Center

Oakland Center, Room 44
312 Meadow Brook Road
Rochester, MI 48309-4454
(248) 370-4TEC
stc@oakland.edu
oakland.edu/stc

The Tutoring Center

North Foundation Hall, Room 103
318 Meadow Brook Road
Rochester, MI 48309-4454
(248) 370-4215
oakland.edu/tutoring
tutoring@oakland.edu
Tutoring hours:
M – Th: 9 a.m. – 7 p.m.
F: 9 a.m. – 5 p.m.

Undergraduate Admissions

North Foundation Hall, Room 101
318 Meadow Brook Road
Rochester, MI 48309-4454
(248) 370-3360
visit@oakland.edu
oakland.edu/futurestudents

University Housing

Hamlin Hall, Room 448
550 Meadow Brook Road
Rochester, MI 48309-4452
(248) 370-3570
housing@oakland.edu
oakland.edu/housing

University Operator

(248) 370-2100

University Recreation and Well-Being

Recreation and Athletics Center
569 Pioneer Drive
Rochester, MI 48309-4482
(248) 370-4REC
rec@oakland.edu
oakland.edu/campusrec

Veteran Certification

O'Dowd Hall, Room 100
586 Pioneer Drive
Rochester, MI 48309-4482
(248) 370-4010
veterans@oakland.edu
oakland.edu/veterans

Veterans Support Services

North Foundation Hall, Room 116
318 Meadow Brook Road
Rochester, MI 48309-4454
(248) 370-2010
vss@oakland.edu
oakland.edu/veterans

Writing Center

Kresge Library, Room 212
100 Library Drive
Rochester, MI 48309-4479
(248) 370-3120
ouwc@oakland.edu
oakland.edu/ouwc
Joan Rosen Writing Studio hours:
M – Th: 8 a.m. – 9:30 p.m.
F: 8 a.m. – 5 p.m.
Sat: 3:30 p.m. – 9:30 p.m.





FOCUS ON THE FINISH LINE

oakland.edu/finishline

Keep on track toward graduation and life after OU by following these phases:

1



EXPLORE YOUR OPTIONS

Explore your academic options and dive into campus life.

2



ENGAGE IN YOUR MAJOR

Get serious about your major, and set goals for a stellar future.

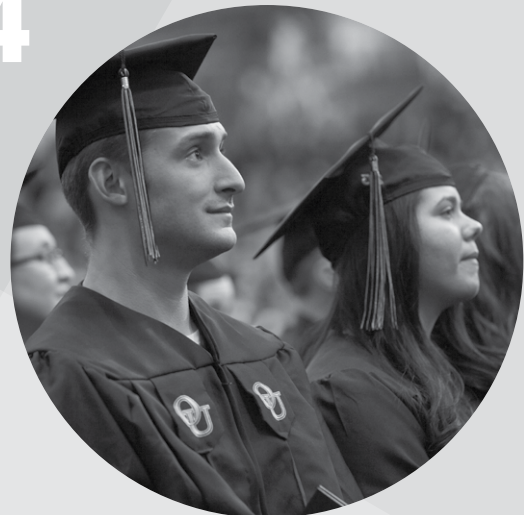
3



GAIN RELEVANT EXPERIENCE

Sharpen your competitive edge with internships and career-related experience.

4



LAUNCH YOUR FUTURE

Cross the stage at graduation with a strong resume and professional direction.

OU Fight Song

Fight, fight, fight for Oakland
Fight the whole game long
Fight, fight, fight for Oakland
Keep the Grizzlies strong

While the battle rages
And our work's not done
We will fight for glory
Till the game is won

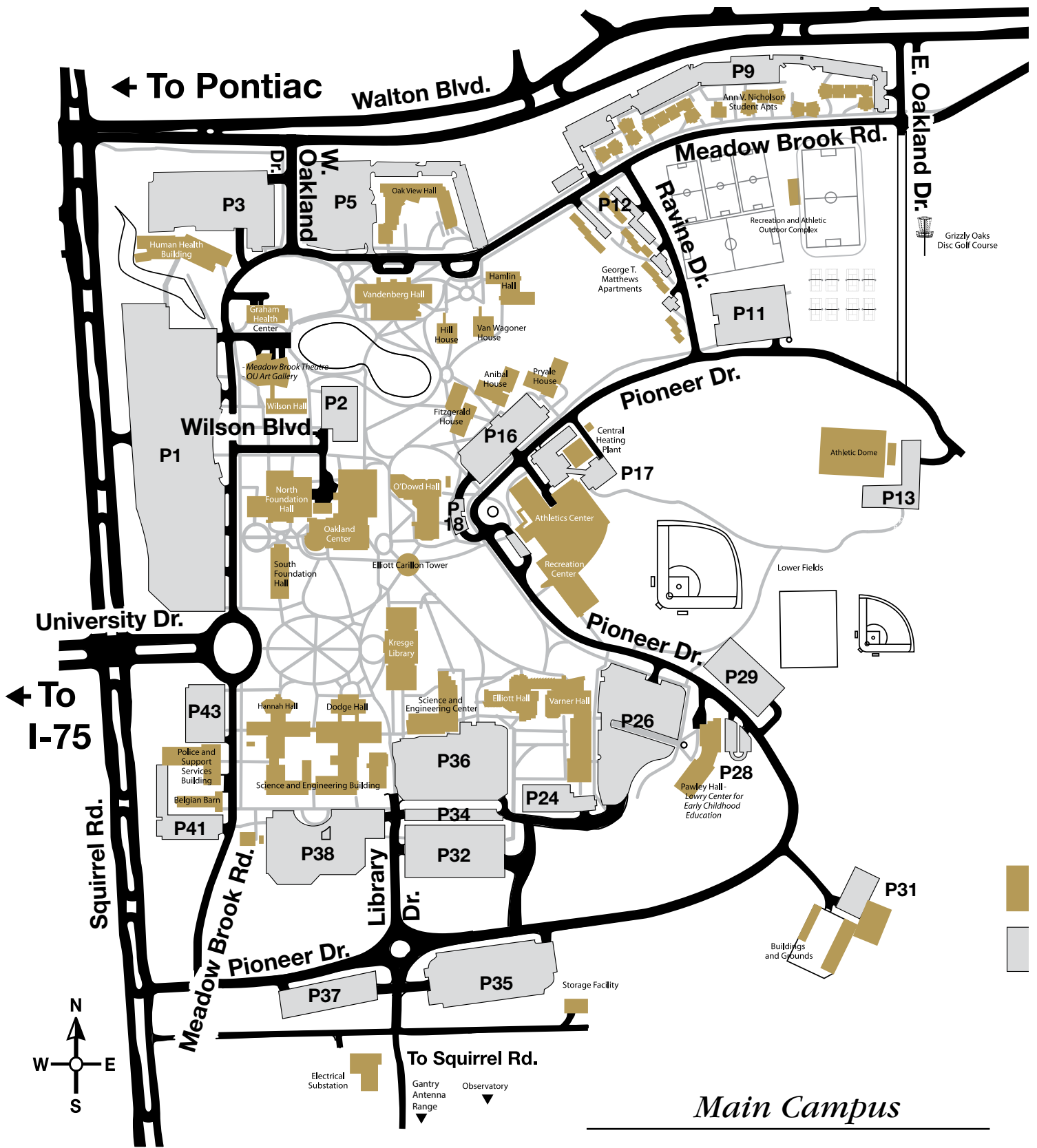
OU! (shout)
GO BLACK! (shout)
GO GOLD! (shout)
GO FIGHT! (shout)

Fight, fight, fight for Oakland
Fight the whole game long
Fight, fight, fight for Oakland
Keep the Grizzlies strong

When the game is over
And the story's told
OU will claim victory
We're the Black and Gold
OU! (shout)

© 1988 Oakland University
by Michael A. Mitchell

To Rochester →
To Meadow Brook Estate →



Main Campus

- Buildings and other destinations
- Parking
- Walking paths