



QUESTIONS ABOUT OU OR YOUR APPLICATION?

Contact your admissions adviser
oakland.edu/admissionsadviser

Undergraduate Admissions
Wilson Hall, Room 2000
371 Wilson Blvd.
Rochester, MI 48309
(248) 370-3360 | visit@oakland.edu



OUAdmissions

UNDERGRADUATE ADMISSIONS

Oakland University is accredited as a doctoral-granting institution by the Higher Learning Commission (hlcommission.org) / [800] 621-7440.
Oakland University's Annual Security and Fire Safety Report is available at oupolice.com/clearly/statement.

I AM GOLDEN

OAKLAND UNIVERSITY

@OaklandU





LEADERS DON'T JUST MEET EXPECTATIONS.

THEY SHATTER THEM.
THEY DIG DEEP TO ENFORCE CHANGE AND DEFINE DESTINIES.

LEADERS PUSH BEYOND WHAT'S POSSIBLE
TO FIND WHAT'S BEST.

THEY TRANSFORM THE WORLD — AND THEMSELVES.

UNLOCK YOUR INNER LEADER
AT OAKLAND UNIVERSITY,
AND REVOLUTIONIZE YOUR FUTURE.

MEET JENNIFER
Psychology Major
OU Orientation Group Leader
OU CMI Peer Mentor

Every new opportunity to learn and lead fueled
JENNIFER MEDRANO DELACRUZ'S passion for
helping others. With the skills she sharpened mentoring
and coaching students to success coupled with her
psychology degree, Jennifer is unlocking the power to
make a difference.



Become a #FutureGrizzly and pursue excellence with 140 undergraduate degree programs that push you to think beyond four walls. To get out and experience it for yourself. To find the answers in the lab, the field, the stage and the community.

You'll find your professors become your mentors, and they'll help you make important connections between theory and practice. They stand firm on years of academic excellence — they are published authors, noted researchers, experts in their fields — and use their knowledge to cultivate and challenge yours.

Push yourself even more in OU's Honors College, where students complete demanding courses while working toward their major. Almost 90 percent of Honors College students have a 3.65 or higher GPA, putting them on par to graduate in the top five percent of the nation. These students take charge, spearhead research, debate respectfully and truly evolve as leaders.

MEET OLIVIA

Bioengineering Major
Computer Science Minor
Platinum Presidential Scholar

SAE Mobility Forward AI Mini Challenge, First Place

OLIVIA RACETTE's academic advisers encouraged her to get involved in extracurricular activities despite last year's remote learning. So she participated in NASA's Deep Space Food Challenge, and worked with a team to create a system that would supply astronauts with nutrients for years — an experience that taught her to take risks while being creative.

ACADEMIC SERVICES

Advising throughout each year
Tutoring and supplemental instruction
Full-service writing center
24/7 library
Study groups

Peer mentors
Learning seminars
Technology loan

HONORS COLLEGE BENEFITS

Small class sizes
Research project funding
Study abroad opportunities
Priority registration
Special academic advising

TO MAKE SURE THEY START STRONG AT OU, EVERY STUDENT RECEIVES EXTRA SUPPORT AND GUIDANCE THROUGH THEIR FIRST YEAR.

oakland.edu/fyac



MEET CAMILA

- Bachelor of Science, Biomedical Sciences
- Medical Student, OU William Beaumont School of Medicine
- OU Pre-Medical Society Executive Board
- Honors College Merit Scholarship Recipient
- St. Joseph Mercy Oakland Pediatric Unit Volunteer

After witnessing diverse populations suffer through illness, CAMILA RAMOS gained a strong appreciation for wellness — and a better understanding of how to help. Through academic, leadership, volunteer and personal experiences, she reaffirmed her responsibility to reach out to those most in need, with compassion and grace, and to always lead by example.

Feed your curiosity with research that matters. At Oakland, you can participate in undergraduate research as early as your freshman year. That means you get a leg up on the competition while participating in projects and experiments that lead to answers and change.

Our students work alongside professors to see how proteins contribute to Alzheimer’s disease, develop apps for wearable devices, and improve balance assessments to prevent the risk of falling.

Hands-on learning happens outside of the lab, too. Our students trek to rivers and streams to monitor the impact of invasive mud snails on the Great Lakes. They develop and practice elementary lesson plans in our early childhood center. And they identify bee species to protect and preserve the dwindling honeybee population.

Experience OU’s
Living Classroom



RESEARCH
CENTERS

- Automotive Tribology Center
- Center for Autism Research, Education and Support
- Center for Biomedical Research
- Center for Cybersecurity
- Center for Data Science and Big Data Analytics

- Center for Integrated Business and Research Education
- Center for Robotics and Advanced Automation
- Chrysler Learning and Innovation Center for Sheet Metal Forming Technology

- Clean Energy Research Center
- Counseling Center
- Eye Research Institute
- Fastening and Joining Research Institute
- Galileo Institute for Teacher Leadership

- Ken Morris Center for the Study of Labor and Work
- Lowry Center for Early Childhood Education
- Reading Clinic
- SmartZone Business INCubator

OU IS CLASSIFIED AS A DOCTORAL RESEARCH UNIVERSITY BY THE
CARNEGIE FOUNDATION FOR THE ADVANCEMENT OF TEACHING.

oakland.edu/research

Located in the heart of Oakland County, one of the nation's hardest working and most prosperous regions, OU is literally at the center of opportunity. With the help of OU's Career Services, our students land internships and job placements with major corporations like Stellantis and Beaumont Health System, as well as local school districts, governments and nonprofits — all in Oakland's backyard.

But before they dive into their dream careers, many students find their first jobs right on campus. They work side-by-side with faculty and staff to improve processes, absorb knowledge and develop strong work ethics. It's why employers seek OU students: they are the hardest-working students around.

oakland.edu/careerservices



Expand your horizons beyond Michigan. Study abroad in six continents or study away at nearly 200 colleges and universities in North America. There is no better way to earn confidence and courage than by throwing yourself into other cultures and customs. Scholarships are available for these life-changing experiences. Plus, you'll earn credit toward your degree while exploring a whole new world.

oakland.edu/internationaleducation

In a 15 minute drive, you can find yourself in downtown Rochester, with tons of shopping, dining and entertainment opportunities. And nearby Auburn Hills offers another lively downtown with restaurants, nightlife and the DEN, a renovated historical cabin with free wi-fi and study areas.



MEET WESLEY

Clinical and Diagnostic Sciences Major,
Specializing in Medical Laboratory Science

Michigan Physiology Quiz

Habitat for Humanity (Vice President)

Honors College Mocerì Scholar

Leadership OU

WESLEY WRIGHT discovered that OU's Medical Laboratory Science track included valuable experiences like hands-on lab research and working side-by-side with expert faculty. These activities allowed him to flourish as a true leader, and now he's ready to make a difference in the lives of others as a clinical pharmacist.

140 UNDERGRADUATE DEGREE PROGRAMS.

HUNDREDS OF CAREER OPTIONS.

YOUR DEGREE WILL BE PUT TO WORK
THE MINUTE YOU GRADUATE.

For flexibility, some programs are offered **online** and nearby in **Macomb County**.

COMPETITIVE, DIRECT ADMISSION PROGRAMS INCLUDE:

Business Honors Direct Admission — the only standalone business honors curriculum at a Michigan university, this program offers customized classes and a host of unique experiences within the School of Business Administration.
[oakland.edu/business/undergraduate-students/honors](#)

Basic BSN Direct Admission — designed for high-achieving high school students who intend to major in nursing and want to attend OU full-time, this program admits students directly to the School of Nursing Basic-BSN track.
[oakland.edu/nursing/undergraduate-program/bsn](#)

COMPETITIVE ADMISSION

Majors in the School of Music, Theater and Dance require audition for admission to the program. Students should be admitted to OU prior to their audition date.
[oakland.edu/smtld/admissions-and-auditions](#)

| | | | | | | | | | | | | | | | | |
|------------------------------|---------------------------------|--------------------------------|--|--|----------------|------------------------------------|-----------------------------------|-----------------------------------|--------------------------------------|--|----------------------------------|--|------------------------------------|---------------------------|----------------------------------|--|
| COLLEGE OF ARTS AND SCIENCES | oakland.edu/cas | Creative Writing | International Relations | Education) (BA/BS) | CONCENTRATIONS | SCHOOL OF MUSIC, THEATRE AND DANCE | oakland.edu/smtld | SCHOOL OF BUSINESS ADMINISTRATION | oakland.edu/business | SCHOOL OF EDUCATION AND HUMAN SERVICES | oakland.edu/sehs | SCHOOL OF ENGINEERING AND COMPUTER SCIENCE | oakland.edu/secs | SCHOOL OF HEALTH SCIENCES | oakland.edu/shs | oakland.edu/nursing |
| | Actuarial Science | Criminal Justice | Japanese Language and Literature | Political Science | | | Acting | | Accounting | | Elementary Education | | Bioengineering | | Applied Health Sciences | Accelerated Second Degree BSN |
| | Anthropology | Economics (BA) | Japanese (K-12 Education) | Professional and Digital Writing | | | Dance (BA/BFA) | | Business | | Human Resource Development | | Computer Engineering | | Health Leadership | Nursing (BSN) |
| | Applied Statistics | English | Japanese Studies | Psychology | | | Music | | Business Actuarial Science | | Secondary Education | | Computer Science | | Health Promotion | RN-BSN Degree completion sequence for registered nurses* |
| | Art History | English (Secondary Education) | Journalism | Public Administration and Public Policy | | | Music Performance | | Business Economics | | | | Electrical Engineering | | Clinical and Diagnostic Sciences | *Offered online only. |
| | Art, Studio | Environmental Science | Latin American Language and Civilization | Public Relations and Strategic Communication | | | Music Education (K-12 Education) | | Economics (BS) | | | | Engineering Chemistry | | Histotechnology | |
| | Art, Studio (K–12 Education) | Film | Liberal Studies | Sociology | | | Music Technology | | Finance | | | | Engineering Physics | | Medical Laboratory Science | |
| | Biochemistry | Film Production | Sociology/Anthropology | Social Work (BSW) | | | Musical Theatre | | General Management | | | | Industrial and Systems Engineering | | Nuclear Medicine Technology | |
| | Bioengineering | French Language and Literature | | Spanish Language and Literature | | | Piano Pedagogy | | Human Resources Management | | | | Information Technology | | Pre-clinical professions | |
| | Biology | French (K-12 Education) | | Spanish (K-12 Education) | | | Theatre | | Management Information Systems | | | | Mechanical Engineering | | Pre-Pharmacy sciences | |
| COLLEGE OF ARTS AND SCIENCES | Biology (Secondary Education) | German Language and Literature | Mathematics | Spanish Language and Literature | CONCENTRATIONS | SCHOOL OF MUSIC, THEATRE AND DANCE | Theatre Design and Technology | | Marketing | SCHOOL OF EDUCATION AND HUMAN SERVICES | | SCHOOL OF ENGINEERING AND COMPUTER SCIENCE | Undecided Engineering | SCHOOL OF HEALTH SCIENCES | Pre-Pharmacy Assistant | SCHOOL OF NURSING |
| | Biomedical Sciences | History | Mathematics (Secondary Education) | Women and Gender Studies | | | | | Operations Management | | | | | | Healthcare Studies | |
| | Chemistry | History (Secondary Education) | Medical Physics | | | | | | | | | | | | Nutrition / Dietetics | |
| | Chemistry (Secondary Education) | | Philosophy | | | | | | | | | | | | Undecided Health Sciences | |
| | Chinese Studies | | Physics | | | | | | | | | | | | Wellness and Health Promotion | |
| | Communication | | Physics (Secondary | | | | | | | | | | | | | |
| | | | | | | | | | | | | | | | | |
| | | | | | | | | | | | | | | | | |
| | | | | | | | | | | | | | | | | |
| | | | | | | | | | | | | | | | | |
| COLLEGE OF ARTS AND SCIENCES | | | | | CONCENTRATIONS | SCHOOL OF MUSIC, THEATRE AND DANCE | | | | SCHOOL OF EDUCATION AND HUMAN SERVICES | | SCHOOL OF ENGINEERING AND COMPUTER SCIENCE | | SCHOOL OF HEALTH SCIENCES | | SCHOOL OF NURSING |
| | | | | | | | | | | | | | | | | |
| | | | | | | | | | | | | | | | | |
| | | | | | | | | | | | | | | | | |
| | | | | | | | | | | | | | | | | |
| | | | | | | | | | | | | | | | | |
| | | | | | | | | | | | | | | | | |
| | | | | | | | | | | | | | | | | |
| | | | | | | | | | | | | | | | | |
| | | | | | | | | | | | | | | | | |
| COLLEGE OF ARTS AND SCIENCES | | | | | CONCENTRATIONS | SCHOOL OF MUSIC, THEATRE AND DANCE | | | | SCHOOL OF EDUCATION AND HUMAN SERVICES | | SCHOOL OF ENGINEERING AND COMPUTER SCIENCE | | SCHOOL OF HEALTH SCIENCES | | SCHOOL OF NURSING |
| | | | | | | | | | | | | | | | | |
| | | | | | | | | | | | | | | | | |
| | | | | | | | | | | | | | | | | |
| | | | | | | | | | | | | | | | | |
| | | | | | | | | | | | | | | | | |
| | | | | | | | | | | | | | | | | |
| | | | | | | | | | | | | | | | | |
| | | | | | | | | | | | | | | | | |
| | | | | | | | | | | | | | | | | |
| COLLEGE OF ARTS AND SCIENCES | | | | | CONCENTRATIONS | SCHOOL OF MUSIC, THEATRE AND DANCE | | | | SCHOOL OF EDUCATION AND HUMAN SERVICES | | SCHOOL OF ENGINEERING AND COMPUTER SCIENCE | | SCHOOL OF HEALTH SCIENCES | | SCHOOL OF NURSING |
| | | | | | | | | | | | | | | | | |
| | | | | | | | | | | | | | | | | |
| | | | | | | | | | | | | | | | | |
| | | | | | | | | | | | | | | | | |
| | | | | | | | | | | | | | | | | |
| | | | | | | | | | | | | | | | | |
| | | | | | | | | | | | | | | | | |
| | | | | | | | | | | | | | | | | |
| | | | | | | | | | | | | | | | | |
| COLLEGE OF ARTS AND SCIENCES | | | | | CONCENTRATIONS | SCHOOL OF MUSIC, THEATRE AND DANCE | | | | SCHOOL OF EDUCATION AND HUMAN SERVICES | | SCHOOL OF ENGINEERING AND COMPUTER SCIENCE | | SCHOOL OF HEALTH SCIENCES | | SCHOOL OF NURSING |
| | | | | | | | | | | | | | | | | |
| | | | | | | | | | | | | | | | | |
| | | | | | | | | | | | | | | | | |
| | | | | | | | | | | | | | | | | |
| | | | | | | | | | | | | | | | | |
| | | | | | | | | | | | | | | | | |
| | | | | | | | | | | | | | | | | |
| | | | | | | | | | | | | | | | | |
| | | | | | | | | | | | | | | | | |
| COLLEGE OF ARTS AND SCIENCES | | | | | CONCENTRATIONS | SCHOOL OF MUSIC, THEATRE AND DANCE | | | | SCHOOL OF EDUCATION AND HUMAN SERVICES | | SCHOOL OF ENGINEERING AND COMPUTER SCIENCE | | SCHOOL OF HEALTH SCIENCES | | SCHOOL OF NURSING |
| | | | | | | | | | | | | | | | | |
| | | | | | | | | | | | | | | | | |
| | | | | | | | | | | | | | | | | |
| | | | | | | | | | | | | | | | | |
| | | | | | | | | | | | | | | | | |
| | | | | | | | | | | | | | | | | |
| | | | | | | | | | | | | | | | | |
| | | | | | | | | | | | | | | | | |
| | | | | | | | | | | | | | | | | |
| COLLEGE OF ARTS AND SCIENCES | | | | | CONCENTRATIONS | SCHOOL OF MUSIC, THEATRE AND DANCE | | | | SCHOOL OF EDUCATION AND HUMAN SERVICES | | SCHOOL OF ENGINEERING AND COMPUTER SCIENCE | | SCHOOL OF HEALTH SCIENCES | | SCHOOL OF NURSING |
| | | | | | | | | | | | | | | | | |
| | | | | | | | | | | | | | | | | |
| | | | | | | | | | | | | | | | | |
| | | | | | | | | | | | | | | | | |
| | | | | | | | | | | | | | | | | |
| | | | | | | | | | | | | | | | | |
| | | | | | | | | | | | | | | | | |
| | | | | | | | | | | | | | | | | |
| | | | | | | | | | | | | | | | | |
| COLLEGE OF ARTS AND SCIENCES | | | | | CONCENTRATIONS | SCHOOL OF MUSIC, THEATRE AND DANCE | | | | SCHOOL OF EDUCATION AND HUMAN SERVICES | | SCHOOL OF ENGINEERING AND COMPUTER SCIENCE | | SCHOOL OF HEALTH SCIENCES | | SCHOOL OF NURSING |
| | | | | | | | | | | | | | | | | |
| | | | | | | | | | | | | | | | | |
| | | | | | | | | | | | | | | | | |
| | | | | | | | | | | | | | | | | |
| | | | | | | | | | | | | | | | | |
| | | | | | | | | | | | | | | | | |
| | | | | | | | | | | | | | | | | |
| | | | | | | | | | | | | | | | | |
| | | | | | | | | | | | | | | | | |
| COLLEGE OF ARTS AND SCIENCES | | | | | CONCENTRATIONS | SCHOOL OF MUSIC, THEATRE AND DANCE | | | | SCHOOL OF EDUCATION AND HUMAN SERVICES | | SCHOOL OF ENGINEERING AND COMPUTER SCIENCE | | SCHOOL OF HEALTH SCIENCES | | SCHOOL OF NURSING |
| | | | | | | | | | | | | | | | | |
| | | | | | | | | | | | | | | | | |
| | | | | | | | | | | | | | | | | |
| | | | | | | | | | | | | | | | | |
| | | | | | | | | | | | | | | | | |
| | | | | | | | | | | | | | | | | |
| | | | | | | | | | | | | | | | | |
| | | | | | | | | | | | | | | | | |

Get to Know
Bear Lake



Many students choose OU for its small campus feel. It's that sense of community, of not getting lost in the crowd, that so many are drawn to. And it swells each day you're on campus — each time you discover a hidden study spot, when the bells ring in the Elliott Tower, when the sun shines on the Saints and Sinners fountain, each time you lay in a hammock near Bear Lake, each time you pass a friend who was once a stranger.

It's these intimate details, the small moments, that instill a sense of belonging and pride, and make Oakland's campus a truly special place.

When you live on campus, you truly find everything you need — from academic support to employment opportunities to the best friends you'll ever have.

oakland.edu/housing

IMPORTANT HOUSING DATES

INCOMING FRESHMEN: APPLY BEGINNING OCTOBER 1

TRANSFER STUDENTS: APPLY BEGINNING FEBRUARY 1



Oakland pride runs deep through all 250 student organizations.

Whether they're doing service projects throughout the United States on Alternative Spring Break, learning different math concepts with the Mathematics Student Society, or advocating on behalf of all students with OU Student Congress, members proudly represent Oakland in the community and across the country.

SPECIAL RESOURCES MAKE SURE YOU SUCCEED:

OU COUNSELING CENTER offers personal counseling and mental health services, including crisis intervention, substance abuse evaluation and more.

The GENDER AND SEXUALITY CENTER promotes inclusion and understanding around issues of gender and sexuality.

The CENTER FOR MULTICULTURAL INITIATIVES supports underrepresented students' success and fosters campus-wide diversity.

DISABILITY SUPPORT SERVICES advocates for students with disabilities and assists with personal and academic matters.

VETERANS SUPPORT SERVICES helps veterans and military-connected students as they return to university life.

RESIDENTS ENJOY FREE

Access to computer labs
Laundry facilities
Lounges with big-screen TVs
Parking
Wireless Internet

RESIDENCE HALLS

Hamlin
Hillcrest
Oak View
Vandenberg

APARTMENTS

Ann V. Nicholson
Apartments
George T. Matthews
Apartments

SPECIAL INTEREST FLOORS

Business
Education
Engineering and Computer Science
Health Sciences

OFFICE OF STUDENT INVOLVEMENT

Leadership and volunteer center
Student resource center
Service window
Discounted tickets to local theater
and professional sports

**OU IS RANKED ONE OF THE TOP
LGBTQ-FRIENDLY CAMPUSES IN MICHIGAN
BY THE CAMPUS PRIDE INDEX.**

oakland.edu/students

16 MATTHEW MORETUZZO

The clock counts down. The crowd roars, fists in the air. Sweat drips through your brows and into your eyes. Your muscles ache and your feet are like cement. Your heart is pounding, your breath ragged. You’re almost ready to give up. But you don’t — you’re a Golden Grizzly and your drive never stops.

Whether on the court, the field or in the pool, OU student athletes push themselves past the breaking point. Discipline, strength and the desire to win fuel them to achieve their best. And it’s working: since joining the Horizon League, one of the top performing leagues in the NCAA, OU has won 83 Division I championships and made 61 NCAA appearances.

Let your competitive side come out to play with OU’s year-round intramural programs and nationally-ranked club sports. Playing fields are well-lit for night, so you don’t have to stop playing when the sun goes down.

Taking care of your health is essential for all that you’ll do at OU. That’s why University Recreation and Well-Being will keep you at the top of your game, physically and mentally. You can test your endurance with a bootcamp class or move with your breath during yoga. Try bright light therapy when winter gets dreary or learn stress management techniques that can apply to every aspect of your life. Best of all, there is no membership cost for enrolled students.

MEET MATTHEW

- Finance Major
- Division I ACHA Hockey
- Hope for the City Volunteer
- Business Honors Program
- Financial Management Association

MATTHEW MORETUZZO has what it takes to balance the demands of his finance classes with a grueling Division I hockey season: drive and determination. And he’ll rely on those traits even more when he begins a financial advising internship at Plante Moran this summer.



DIVISION I ATHLETICS
goldengrizzlies.com

MEN'S

- Baseball
- Basketball
- Cross country
- Golf
- Soccer
- Swimming and diving
- Track and field

WOMEN'S

- Basketball
- Cross country
- Dance
- Golf
- Soccer
- Softball
- Swimming and diving
- Tennis
- Track and field
- Volleyball

CO-ED

- Esports

INTRAMURAL SPORTS

- Badminton
- Basketball
- Floor hockey
- Indoor soccer
- Rocket League
- Table tennis
- Volleyball

CLUB SPORTS

- Badminton
- Ballroom and Latin dance
- Baseball
- Cheer
- Counterstrike
- Cycling
- Equestrian
- Fencing
- Figure skating

- Football
- Golf
- Ice hockey
- Judo
- Lacrosse
- League of Legends
- Rocket League
- Roundnet
- Rugby

- Running
- Soccer
- Super Smash Bros
- Swim
- Tennis
- Ultimate Frisbee
- Vitality Dance
- Volleyball
- Water polo

oakland.edu/recwell

VISIT US

There is no better way to get a feel for your future college than by visiting campus.

CAMPUS TOURS

Led by current students, walking tours are generally offered Monday through Friday.

DISCOVER OU

Learn about OU with an admissions presentation, campus tour and meet with academic and student services staff.

ACADEMIC VISIT DAYS

Discover academic, research and scholarship opportunities with school-specific events like:

- Business Day
- Education and Human Services Night
- Engineering and Computer Science Day
- Health Sciences Day
- Nursing Day
- Pre-Med Night

GO FOR THE GOLD

Explore majors and career options, tour campus and the residence halls, and meet OU faculty, staff and students during our biggest event for high school and transfer students.

TRANSFER STUDENT OPEN HOUSE

Receive an immediate admission decision and credit evaluation, and learn about general education requirements, transfer credit procedures and financial aid.

REGISTER FOR ON-CAMPUS AND VIRTUAL EVENTS oakland.edu/visit

TOUR OU VIRTUALLY youvisit.com/oakland

SEE WHEN OU WILL HOST HIGH SCHOOL AND COMMUNITY COLLEGE VISITS AND INFO FAIRS IN YOUR AREA

oakland.edu/adviserscheduler



Master the zip lines and obstacles at TreeRunner Adventure Park.



Tour Meadow Brook Hall during its annual Holiday Walk.



Play disc golf at the Grizzly Oaks course.



Build your resume with Handshake.



Read *The Oakland Post* every Wednesday.



Go shopping and dining in downtown Rochester.



Relive your OU memories during Homecoming.



7 hours Marquette
6 hours Milwaukee

5 hours Chicago

4 hours Traverse City

2.5 hours Grand Rapids & Kalamazoo

1.5 hours Lansing, Toledo & St. Clair

1 hour Ann Arbor

45 minutes Flint

30 minutes Detroit



Celebrate the start of college with Welcome Week and New Student Welcome.



Attend Meadow Brook Ball at Meadow Brook Hall (a National Historic Landmark).



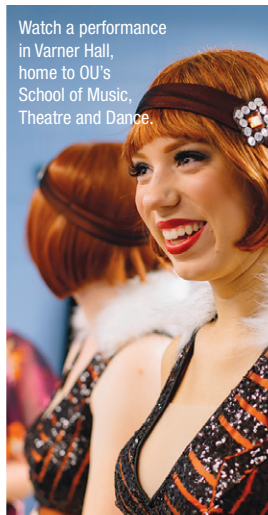
Run through the water fountain at the Elliott Tower.



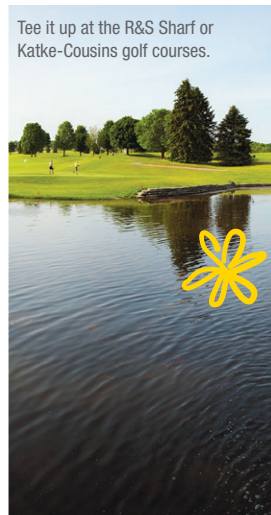
Play video games in the Oakland Center's Bear Cave.



Get your annual free flu shot at the Graham Health Center.



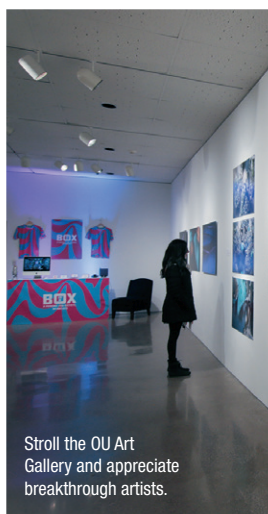
Watch a performance in Varner Hall, home to OU's School of Music, Theatre and Dance.



Tee it up at the R&S Sharf or Katke-Cousins golf courses.



Root for the Tigers during OU Night at Comerica Park.



Stroll the OU Art Gallery and appreciate breakthrough artists.



Get free swag from the Grizz Gang as you cheer on the Golden Grizzlies.



Enjoy A Christmas Carol at Meadow Brook Theatre.



Buy fresh produce from the Campus Student Organic Farm.



Meet Jean Ann Miller in the Office for Student Involvement.



Go to a concert at Meadow Brook Amphitheatre.



Moving from one college to another may seem overwhelming. At Oakland, we make the process easy. Our resources ensure your hard earned credits will transfer and apply to your degree. So no matter where you're going, or where you came from, OU is where your perseverance pays off — and you move one step closer to graduation.

We offer:

- No limit to the number of credits you may transfer
- Generous, year-round scholarships and merit awards to help you afford your education
- Guaranteed admission to reserve your place at OU
- General education fulfillment through the Michigan Transfer Agreement
- Online major guides and articulation agreements for all community colleges in Michigan
- Online transfer equivalency tool to see exactly how your credits will transfer
- Reverse transfer which may make you eligible for an associate's degree at your former community college
- Improved articulation agreements that may require less than 45 credits to complete
- Transfer-specific orientation and welcome
- Assigned academic advisers

MEET LYZBETH

Studio Art (K-12) Major
Phi Theta Kappa Award Scholarship Recipient
Associate's Degree, Macomb Community College
Golden Grizzlies Graduate Award Recipient

As a young mother, **LYZBETH PAYNE** had to put her college career on hold to raise her children. But her dream of earning a degree never faltered. So she finished her associate's degree, then transferred to OU where all her hard-earned credits were accepted. Now she's working toward her bachelor's degree, and showing her children how ambition leads to success.

TRANSFER STUDENTS:
COMPLETE YOUR
ADMISSION APPLICATION

BY **DECEMBER 1** (TO TRANSFER IN THE WINTER),
AUGUST 1 (TO TRANSFER IN THE FALL)
OR **JULY 1** (TO TRANSFER IN THE SUMMER)
TO BE AUTOMATICALLY CONSIDERED
FOR THESE SCHOLARSHIPS:

- PRESIDENTIAL TRANSFER AWARD** — \$10,000 for two years (\$5,000 per year)
PHI THETA KAPPA AWARD — \$5,000 for two years (\$2,500 per year)
TALENTED TRANSFER AWARD — \$2,000 for two years (\$1,000 per year)
OU TRANSFER GRANT — \$2,000 for two years (\$1,000 per year)

TRANSFER
FACTS

THERE IS NO LIMIT TO THE NUMBER OF CREDITS
YOU MAY TRANSFER.
AT LEAST 45 CREDITS ARE NEEDED AT OU TO
EARN A BACHELOR'S DEGREE.

OU WAS NAMED TO PHI THETA KAPPA'S 2022
TRANSFER HONOR ROLL FOR OUR OUTSTANDING
SUPPORT OF TRANSFER STUDENTS.

oakland.edu/transfers

SCHOLARSHIPS AND FINANCIAL AID

Everyone deserves access to an outstanding education — and all the valuable opportunities that come with it. That’s why we’re doing all we can to help make an exceptional education affordable.

FINANCIAL AID

More than 70 percent of all OU students receive financial assistance — including scholarships, grants, work-study and student loans — totaling more than \$200 million annually.

OU offers automatic merit scholarships and need-based grants to incoming students based on grade point average, and in some instances, on SAT/ACT scores. We also offer nearly 300 annual departmental scholarships to current students.

PAYMENT PLAN

OU offers a flexible payment plan each semester to help you spread tuition and on-campus housing into several smaller, more manageable payments.

oakland.edu/scholarships

TUITION RATES

COLLEGE OF ARTS AND SCIENCES
SCHOOL OF EDUCATION AND HUMAN SERVICES

In-state and out-of-state with the Non-Resident Award¹

| | |
|------------|----------|
| Freshmen | \$14,476 |
| Sophomores | \$14,476 |
| Juniors | \$15,668 |
| Seniors | \$15,668 |

International and out-of-state²

| | |
|-----------------------|----------|
| Freshmen & Sophomores | \$23,730 |
| Juniors & Seniors | \$23,772 |

SCHOOL OF BUSINESS ADMINISTRATION
SCHOOL OF ENGINEERING AND COMPUTER SCIENCE
SCHOOL OF HEALTH SCIENCES
SCHOOL OF NURSING

In-state and out-of-state with the Non-Resident Award¹

| | |
|------------|----------|
| Freshmen | \$14,662 |
| Sophomores | \$15,151 |
| Juniors | \$17,815 |
| Seniors | \$18,390 |

International and out-of-state²

| | |
|-----------------------|----------|
| Freshmen & Sophomores | \$23,730 |
| Juniors & Seniors | \$23,772 |

- Many students qualify for a scholarship that would cover the difference between in-state and out-of-state tuition. Rate on chart reflects this award.
- Students who plan to attend OU on a student visa (F-1) or an exchange visa (J-1). Citizens and permanent residents of Canada or Mexico may also qualify.

MEET BROOK

Biology Major
Honors College
NASA Internship

As an undergraduate student, **BROOKE SHEPARD** discovered her passion for immunology research. That enthusiasm opened the doors to a prestigious internship with NASA, where she learned more about becoming a space scientist — an experience that’s inspiring her to invent the future through innovation.

FRESHMAN STUDENTS: COMPLETE YOUR ADMISSION APPLICATION

BY MARCH 1 (FOR FALL ADMISSION),
DECEMBER 1 (FOR WINTER ADMISSION)
OR JULY 1 (FOR SUMMER ADMISSION)
TO BE AUTOMATICALLY CONSIDERED
FOR THESE SCHOLARSHIPS:

- PLATINUM PRESIDENTIAL SCHOLAR AWARD — \$48,000 for four years (\$12,000 per year)
GOLD PRESIDENTIAL SCHOLAR AWARD — \$36,000 for four years (\$9,000 per year)
DISTINGUISHED SCHOLAR AWARD — \$22,000 for four years (\$5,500 per year)
TALENTED SCHOLAR AWARD — \$14,000 for four years (\$3,500 per year)
ACADEMIC ACHIEVEMENT AWARD — \$8,000 for four years (\$2,000 per year)
UNIVERSITY RECOGNITION AWARD — \$4,000 for four years (\$1,000 per year)
GEOGRAPHIC REGION AWARD — \$6,000 for four years (\$1,500 per year)
NON-RESIDENT AWARD — In-state tuition rates

TUITION is charged per credit hour and based on class standing (above tuition is an estimate, based on 30 credits). Freshmen and sophomores with less than 56 credits are considered lower-division students; juniors and seniors with 56 or more credits are considered upper-division students.

DOUBLE OCCUPANCY on-campus room and board is estimated at \$10,852 per year.

Books and supplies vary depending on courses, but a general estimate is \$800 per year.

oakland.edu/tuition

APPLY

1.

Complete online application

2.

Submit SAT or ACT scores, if necessary

3.

Send transcripts, AP, IB or CLEP scores for any previously earned college credits

4.

Complete the FAFSA beginning October 1
(OU's school code: 002307)

5.

Check your email inbox for an admission decision.

6.

Attend orientation and enroll in classes

7.

Become a Golden Grizzly!

With the ultimate goal of becoming a physical therapist, **MATSIMELA MILLER** is working hard to develop the skills he'll need for his career: intellect, compassion and resilience. By fueling his passion, he's looking at a future filled with endless possibility.

MEET Matsimela
Health Sciences Major
Circle of Brotherhood
Center for Multicultural Initiatives Mentor

ADMISSION CRITERIA

For freshmen

2.5+ CUMULATIVE GPA

- Test-optional
- Do not need to submit a test score for admission
- SAT or ACT scores accepted for additional scholarship consideration and course placement.

 **COLLEGE PREP COURSES TAKEN**

COMPLETED STATE GRADUATION REQUIREMENTS, IDEALLY:

- Four credits of English language arts
- Four credits of math, including algebra 1, algebra 2 and geometry
- Three credits of science
- Three credits of social studies
- Two credits of world language
- One credit of visual, performing or applied arts
- One credit of physical education and health
- Online learning experience

For transfers

2.5+ GPA positive trend of grades 

24 or more college credits

If you've earned **fewer than 24 college credits**

= admission will be based on both college and high school records

For The Honors College

3.7+ GPA

3.5+ GPA

for entering transfers

= automatically qualify for admission! Contact the Honors College for an admitted student session

3.3+ GPA

= must complete the application form at oakland.edu/hc (in addition to the regular OU admission application)

Apply to OU for Free Now



QUESTIONS ABOUT YOUR APPLICATION?

oakuniv@oakland.edu
(248) 370-3360

PRIORITY DEADLINES

You can apply to OU at any point in the year, but for automatic scholarship consideration, simply apply by

- > March 1 for fall freshmen
- > August 1 for fall transfers
- > December 1 for winter freshmen and transfers
- > July 1 for summer freshmen and transfers