

Winter 2018 Newsletter

2018 Events at a Glance

Welcome to 2018. The Center for Excellence in Teaching and Learning (CETL) is pleased to present our programs and services for the winter semester. We encourage you to participate in our workshops, virtual sessions, consultations and special events. We are here to support and enhance your teaching and learning. We strive to be a voice for student success and faculty success through our university-wide initiatives.

Check us out at oakland.edu/cetl to see all our programs and services including many virtual resources, training and supports. Browse our website; drop on by in our Center in the 200 Suites of Elliott Hall. We have coffee and hot chocolate to keep you warm!

CONSULTATIONS and MENTORING

CETL provides confidential consultations, mentoring and coaching to all faculty and/or departments. Please contact Judy at ableser@oakland.edu to arrange a time to meet.

Individual sessions may include:

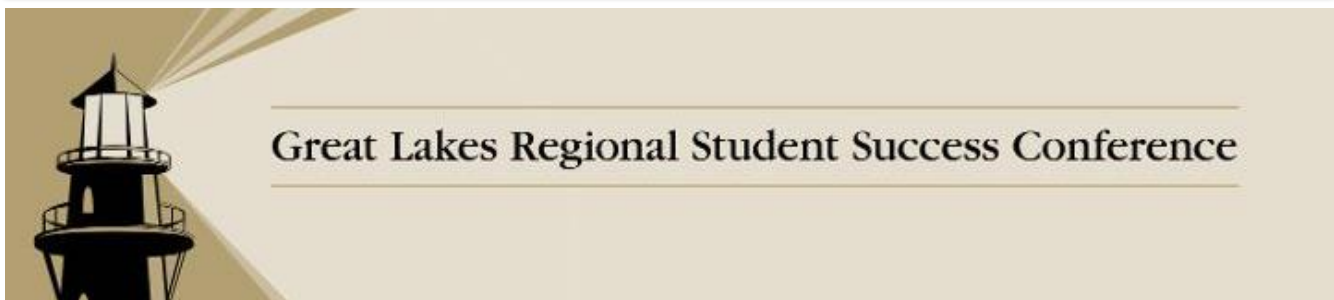
- Developing your syllabus
- Developing your assignments
- Creating rubrics or marking schemes
- Active learning and innovations in the classroom
- Classroom observations with feedback
- Supporting the tenure process

Departmental sessions may include:

- Revising peer reviews
- Revising course evaluation
- Curriculum design
- Faculty collaboration
- Innovations and projects
- Retention
- Faculty development

SPECIAL EVENTS

2018 GREAT LAKES REGIONAL STUDENT SUCCESS CONFERENCE



February 15-16, 2018 at the Renaissance Center

The Great Lakes Regional Student Success Conference is now expanding to include a Faculty Teaching and Learning Track. This exciting and important conference will replace the OU-Windsor Teaching and Learning Conference for 2018. CETL will cover the registration costs for OU faculty whose proposals are accepted. For more information, visit the conference website: oakland.edu/studentsuccess/conference.

LILLY LIGHTNING ROUND

In October 2017, more than 20 OU faculty and staff presented their scholarship on teaching and learning at the Lilly Conference on Teaching and Learning in Higher Education. Learn about their work in this “lightning” quick format in 10-minute presentations on **January 10**. Register for the event on our **Workshops** page.

COFFEE AND CONVERSATION WITH THE PROVOST AND PRESIDENT

An opportunity to engage in informal discussions with the Provost and President. Located in the Learning Studio in 200A Elliott Hall at 12:00-1:30 p.m. (Lunch provided.)

Title	Date	Facilitator
Coffee and Conversation with the Provost: Provost’s Evidence of Teaching Effectiveness Initiative	Wed. Jan. 17	Provost James Lentini
Coffee and Conversation with the President: Teaching and Learning at OU	Tues. Feb. 27	President Ora Hirsch Pescovitz

OU INSTRUCTIONAL FAIR

This year’s Instructional Fair will be held on Wednesday, April 4, 2018 in Banquet Room B. Drop in between 2:00 and 4:00 p.m. in this open house format. Each OU faculty and staff creates a display (print poster, digital presentation, or interactive demonstration) along with a one-page handout of an effective strategy in order to discuss and share ideas with colleagues across the disciplines. Call for proposals now available. To learn more, visit oakland.edu/cetl/promote.

OTHER TEACHING AND LEARNING CONFERENCES THIS YEAR

DIVERSITY, EQUITY AND INCLUSION CONFERENCE

April 12, 2018 Rochester, MI oakland.edu/diversity/conference

e-CORNUCOPIA CONFERENCE: TEACHING WITH TECHNOLOGY

June 22, 2018 Rochester, MI oakland.edu/elis

WORKSHOPS

All our workshops meet in our **Learning Studio in 200A Elliott Hall** at **12:00-1:30 p.m.** (unless noted otherwise). Register for workshops at www.oakland.edu/cetl by clicking on **Workshops**. Lunch provided.

CETL WORKSHOP SERIES – WINTER 2018 SCHEDULE

PROMOTING TEACHING & LEARNING SERIES		
Lilly Lightning Round	Wed. Jan. 10	Lilly Presenters
Stereotype Threat and Student Learning	Wed. March 14	Joanne Lipson Freed
LEAP: Liberal Education and America's Promise	Tues. March 20	Krista Malley
FACULTY DEVELOPMENT SERIES		
Writing an Effective Teaching Grant	Tues. Feb. 13	Judy Ableser
Learning Communities: Updates on Current LC and Facilitating New LC	Tues. March 13	Judy Ableser & LC Facilitators
Overcoming Post-Tenure and Mid-Career Dissatisfaction: Regaining the Funk	Tues. April 3	Adina Schneeweis
COFFEE & CONVERSATION WITH THE PROVOST AND PRESIDENT (Now 12 – 1:30 P.M. with lunch)		
Coffee (Lunch) & Conversation with the Provost: Provost's Evidence of Teaching Effectiveness Initiative	Wed. Jan. 17	Provost James Lentini
Coffee (Lunch) & Conversation with the President: Teaching and Learning at OU	Tues. Feb. 27	President Ora Hirsch Pescovitz
PLAGIARISM SERIES		
Let's Talk About... Plagiarism	Tues. Jan. 23	S. Wynn-Purdue, B. Wallis, M. Schoen, M. Vervinc
Plagiarism as a Pedagogical Problem	Tues. Jan. 30	S. Wynn-Purdue, B. Wallis, M. Schoen, M. Vervinc
Plagiarism Through the Eyes of ESL Students and Those Who Teach/Tutor Them	Tues. Feb. 6	S. Wynn-Purdue, M. Schoen, M. Vervinc
ADDRESSING BEHAVIOR CONCERNS SERIES		
Classroom Behavior Concerns	Wed. Feb. 7	Judy Ableser
Academic and Behavioral Misconduct	Wed. Feb. 14	Nancy Schmitz
Disability Support Services and Mental Health	Wed. Feb. 28	Nancy Schmitz & Sarah Guadalupe
The Active Shooter on Campus	Wed. March 7	Chief Mark Gordon
STEM SERIES		
Scientific Practices/Applications for Transforming Undergraduate STEM Education	Thurs. March. 8	G. Chaudhry, R. Westrick, S. Lal, L. Villa-Diaz
STEM and Community Partnerships	Wed. March 28	L. DeVreugd, T. Raffel, A. Bowe

LEARNING ACCESSIBILITY & ADA DIGITAL COMPLIANCE TRAINING SESSIONS

Located in the Learning Studio (200A Elliott Hall), 12:00 P.M. – 1:30 P.M., lunch will be provided.

oakland.edu/cetl/faculty-development/workshops

This session will be repeated three times, please select one of these three dates

Title	Date	Facilitator(s)
ADA Digital Compliance Training for Faculty	Thurs. March 15	N. Bongers, D. Arnold, C. Moore
ADA Digital Compliance Training for Faculty	Wed. March 21	N. Bongers, D. Arnold, C. Moore
ADA Digital Compliance Training for Faculty	Tues. March 27	N. Bongers, D. Arnold, C. Moore

INSTRUCTIONAL FAIR

Located in the Oakland Center Banquet Room B. Drop in between 2:00 – 4:00 P.M. oakland.edu/cetl/promote

Title	Date	Facilitator
Instructional Fair	Wed. April 4	Multiple Facilitators

CHAIRS FORUM SESSIONS

Department Chairs are invited to attend these sessions. Located in the Learning Studio (200A Elliott Hall), 12:00 – 1:30 p.m., lunch will be provided. oakland.edu/cetl/chairs-corner

Theme	Date	Facilitator
Dealing with Difficult People	Fri. Jan. 26	Jennifer Heisler
Diversity Mindset	Mon. March 5	Jennifer Heisler
Looking Back, Looking Ahead	Fri. April 6	Jennifer Heisler

GRADUATE TEACHING ASSISTANT ORIENTATION & SERIES

Located in the Learning Studio (200A Elliott Hall), 5:30 P.M. – 7:00 P.M., dinner provided.

oakland.edu/cetl/gradseries

***This is for Graduate Teaching Assistants and future faculty.**

Those interested in the entire series need to first register for the orientation session.*

Title	Date	Facilitator
Orientation to Graduate Teaching Assistant and Future Faculty Teaching	Tues. Jan. 9	Joanne Lipson Freed
Graduate Teaching Assistant Series Dates (online and Tuesday evenings) Jan. 23 Feb. 6 (online) Feb. 13 Feb. 27 (online) March 13 March 27 (online) April 10		

ONGOING PROGRAMS and SERVICES

FACULTY DEVELOPMENT INSTITUTES

IDENTITY, AUTHORITY AND EMPOWERMENT

Explore how faculty and student identities affect our teaching and students' learning.

MENTORING FOR EMERGING FACULTY

Receive collaborative support in teaching and acclimation into campus life.

ACTIVE LEARNING TECHNIQUES IN LARGE CLASSES

Learn active learning techniques to design and implement into your own classrooms, and receive feedback from the group.

Learn more about Faculty Development Institutes at oakland.edu/cetl/faculty-development.

LEARNING COMMUNITIES

We are currently running three Learning Communities for faculty and staff. A call for new Learning Communities for the next academic year will be posted during the winter. To learn more about Learning Communities, visit our **Faculty Development** page.

SUPPORTING STUDENTS' EMOTIONAL HEALTH

Katie Jostock, Cynthia Carver
Communication & Writing

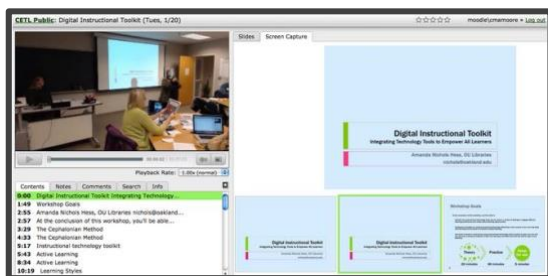
SERVICE LEARNING DESIGN, PRACTICE AND SCHOLARSHIP

Jess Tess-Navarro
Writing & Rhetoric

ENGAGING THE ENVIRONMENT

Jeffrey Insko
English

WORKSHOP RECORDINGS



We record our on-campus workshops for faculty and staff who would like to review these practical workshops at their own place and time. Our eSpace **CETL Workshop Resources** page is open to all OU faculty. To browse the recordings, or go back to a discussion you were a part of and watch them, visit oakland.edu/cetl and click on **Workshops**.

WEEKLY SCHEDULER

To lighten the email load but keep you apprised of timely events for faculty and staff, CETL sends a **Next Week at CETL** notice every Wednesday to help you plan for events a week ahead of time. From this email you can register for workshops and look into special events and funding opportunities. If you do not receive these emails, please visit oakland.edu/cetl/signmeup to stay informed.

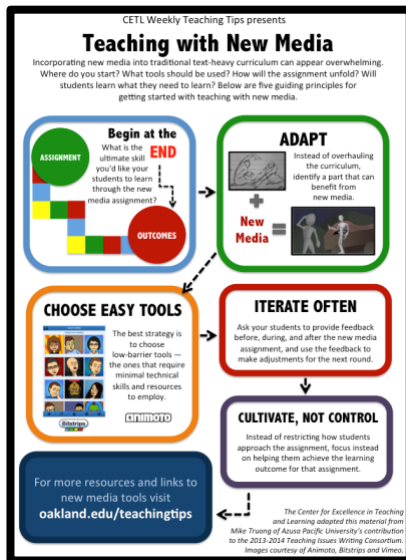
Next Week at CETL

Click on each day to register for the event. To review full workshop descriptions, click [here](#), then click each workshop title for more information.

MON NOV. 23	
TUES NOV. 24	<p>CLICK TO REGISTER FOR THE WORKSHOP</p> <p>Balancing Teaching & Research in STEM Facilitated by WISE@OU</p> <p>Hear from a panel who have balanced teaching and research in STEM effectively, and learn strategies to help balance your own personal life. Lunch provided, 12:00-1:30 p.m.</p>
WED NOV. 25	

VIRTUAL FACULTY DEVELOPMENT

WEEKLY TEACHING TIPS



Weekly Teaching Tips offer a quick-to-implement teaching strategy. Weekly Teaching Tips are inspired by our OU community and faculty across the country. Since we cannot sneak into all of our colleagues' classes, let's continue sharing Weekly Teaching Tips from OU faculty.

Sign up for Weekly Teaching Tips:
oakland.edu/cetl/signmeup

If you have a strategy for assessing group work, using tech tools or improving study skills, offer us a quick write-up, and we may turn it into a CETL Weekly Teaching Tip.

Submit your teaching tip to oakland.edu/teachingtips.

ONLINE MODULES FOR TEACHING AND LEARNING

CETL offers online curriculum on the basics of teaching and learning theory, from constructive alignment to course design. These modules are self-paced and often linked to our university resources and workshops. To browse this curriculum, visit **Virtual Faculty Development** at oakland.edu/cetl.

GRANTS and CALLS

EXCELLENCE IN TEACHING AND LEARNING GRANT

CETL is pleased to announce a grant to enhance excellence in teaching and learning that focuses on student engagement, active learning, meeting learning outcomes and student success with a focus on the scholarship of teaching and learning. Proposals must include evidence-based practices in teaching and learning and detail how these strategies will be implemented and evaluated. Up to five grants of \$3,000 each will be awarded. Tenure-track, tenured faculty, full-time teaching instructors (i.e. special instructors, full-time adjunct and visiting professors), special lecturers and part-time instructors who have taught a minimum of 24 credits at OU may apply for the grant. **Applications are due Tuesday, March 13.** Visit oakland.edu/cetl/grants for more information.

Learn more about how to write a successful grant proposal at the

Writing a Teaching Grant Workshop

Tuesday, Feb. 13

12-1:30 p.m.

Lunch provided.

Register on
our **Workshops** page

FACULTY FELLOWS: CALL FOR APPLICATIONS

This exciting opportunity recognizes the teaching excellence of two eligible faculty members who can share their passion and interest in teaching and learning with others across the campus. Faculty Fellows receive one course release per semester for their service with CETL. **Call for applications is February 27 – March 26.** To learn more about faculty fellows and review past faculty fellows, visit oakland.edu/cetl/top-links/contact-us.

CHAIR FELLOW: CALL FOR APPLICATIONS

In order to support department chairs at Oakland University in the complexities of their role, CETL selects an OU faculty member who has previously served as a department chair to serve as a Chair Fellow. The CETL Chair Fellow dedicates eight hours a week to facilitate chair-focused university events, assist in developing resources for chairs and mentor individual chairs. **Call for applications is February 27–March 26.** To learn more about the CETL Chair Fellow, visit oakland.edu/cetl/top-links/contact-us.

LEARNING COMMUNITIES: CALL FOR PROPOSALS

Faculty are invited to submit a proposal to start a Learning Community. A Learning Community (LC) is a cross-disciplinary, faculty-driven group of 6-12 members (which can include staff and graduate students as well) engaging in a yearlong program to promote the scholarship of teaching and learning (SoTL). CETL provides up to \$1,500 for books, materials, and travel expenses related to the LC's work. **Applications are due Tuesday, April 3.** Visit oakland.edu/cetl/faculty-development for more information.

LILLY CONFERENCE 2018: PROPOSALS AND TRAVEL GRANTS

CETL is a proud sponsor of the Lilly North Conference in Traverse City, MI, a national teaching and learning conference series. Every year, CETL offers travel grants to faculty, especially first-time attendees and presenters. We will announce this call in the spring once applicants receive news of their proposal status. The next Lilly Conference will be held in **October 2018**. Call for Travel Grant applications will be sent in April.

OU TEACHING INITIATIVES

PROVOST'S EVIDENCE OF TEACHING EFFECTIVENESS INITIATIVE

The Provost's Evidence of Teaching Effectiveness Initiative at Oakland University has been created to explore and examine best research-based practices for the evaluation of teaching (formative and summative). The goals of this long-term project are to redesign "course evaluations" and operationalize best practices in using end-of-course student feedback surveys with other measurements of teaching effectiveness.

GATEWAYS TO COMPLETION – G2C

Gateways to Completion (G2C) Initiative is aimed at redesigning and enhancing introductory/gateway courses to increase student success and reduce high DFWI rates. This project is coordinated through the Gardner Institute and funded through a Kresge grant. OU is focusing on redesigning Intro Biology, Calculus I and Foundations of Contemporary Psychology.

UNIVERSAL DESIGN FOR LEARNING AND ADA COMPLIANCE

Universal Design for Learning (or UDL) promotes student success through diverse and inclusive practices. A UDL Initiative Team at Oakland University is exploring ways in which UDL principles can become part of OU's institutional and classroom culture. The team comprises of faculty and students from different schools and staff from academic and student affairs, office of diversity and inclusion, and technology services. CETL and e-LIS will be providing resources and training for faculty in creating ADA compliant digital materials (i.e. slide presentations, lecture capture). Register for a training session at www.oakland.edu/cetl/faculty-development/workshops.

CETL ADVISORY BOARD

CETL works with an advisory board representing faculty and staff membership from across the campus. We extend our appreciation for all of the support and guidance. Current membership includes the following:

Judy Ableser, CETL Director	Katie Jostock, Advising
Dan Arnold, e-Learning and Instructional Support	Joanne Lipson Freed, English
Rebecca Cheezum, Health Sciences	Tom Raffel, Biology
Laura Dinsmoor, Computer Science	Kim Holka, Nursing
Anthony Tuf Francis, Education	Christina Moore, CETL
Jennifer Heisler, Communication	Amanda Nichols Hess, Library
Amy Rutledge, Business	Krista Malley, Director of Student Success
Sarah Lerchenfeldt, Medicine	Brittany Kleinschmidt, Student Representative

We will be looking for new faculty to join the board for next year. If you are passionate about teaching and learning, please consider serving on our Advisory Board.

IN CLOSING

Our team is here to help you:

Judy Ableser, Director, ableser@oakland.edu
Christina Moore, Virtual Faculty Developer, cmamoore@oakland.edu
Candace Campbell, CETL Assistant, ccampbell2@oakland.edu
Suzanne Flattery, CETL Coordinator, flattery@oakland.edu
Joanne Lipson Freed, Faculty Fellow, freed@oakland.edu
Tom Raffel, Faculty Fellow, raffel@oakland.edu
Jennifer Heisler, Chair Fellow, heisler@oakland.edu
Victoria Kendziora, Student Assistant, vmkendziora@oakland.edu

I am so grateful to the collaboration, organization and commitment from our team and from the support we receive from Academic Affairs. A special thanks to Michelle Piskulich for her supervision and guidance.

Respectfully,
Judy Ableser, Ph.D.
CETL Director