

Winter 2016 Newsletter

2016 Events at a Glance

Welcome to 2016. With this new year, may we all continue to focus on student learning and student success by enhancing our own teaching and learning. The Center for Excellence in Teaching and Learning (CETL) provides support to all faculty, instructors, professional staff and graduate students in all areas of teaching and learning and recognizes and values teaching/learning excellence.

Check us out at www.oakland.edu/cetl to see all our programs and services including many virtual resources, training and supports. Come visit us (and have a cup of coffee or hot chocolate on a cold winter's day) in the 200 Suites of Elliott Hall. You can also contact us at (248) 370-2466 or at cetl@oakland.edu (general email), ableser@oakland.edu (Judy Ableser, Director) or flattery@oakland.edu (Suzanne Flattery, Assistant).

CONSULTATIONS and MENTORING

CETL provides confidential consultations, mentoring and coaching to all faculty and/or departments.

Individual sessions may include:

- Developing your syllabus
- Developing your assignments
- Creating rubrics or marking schemes
- Active learning and innovations in the classroom
- Classroom observations with feedback
- Supporting the tenure process

Departmental sessions may include:

- Revising peer reviews
- Revising course evaluation
- Curriculum design
- Faculty collaboration
- Innovations and projects
- Retention
- Faculty development

Please contact Judy at ableser@oakland.edu to arrange a time to meet.

SPECIAL EVENTS

2nd ANNUAL COFFEE AND CONVERSATION WITH THE PRESIDENT AND PROVOST

An opportunity to engage in informal discussions with the President and Provost regarding the vision and implementation of Strategic Plan Goal #1 – Fostering Student Success through a robust teaching and learning environment and comprehensive student services. Located in the **Learning Studio in 200A Elliott Hall** at **12:00-1:00 p.m.**

Title	Date	Facilitator
Coffee and Conversation with the President	Wed. Jan. 13	Judy Ableser
Coffee and Conversation with the Provost	Thurs. March 10	Judy Ableser

10th ANNUAL TEACHING & LEARNING CONFERENCE



Wednesday, May 18-Thursdays, May 19 at Oakland University

"Knowledge is necessary but not sufficient to foster competent, caring, engaged and productive citizens to lead us into our global, diverse future."

In order to meet this goal:

WHAT

content/learning outcomes
should we embrace?
will teaching look like?

HOW

do we transform our
teaching and learning?

WHO

are our students?

**Registration and Proposal Submission Open January 11, 2016.
Proposals Due February 29, 2016.**

OTHER TEACHING AND LEARNING CONFERENCES THIS YEAR

STUDENT SUCCESS CONFERENCE

February 11-12, 2016 Troy, MI oakland.edu/studentsuccess

EQUITY WITHIN THE CLASSROOM CONFERENCE

March 13-15, 2016 Troy, MI equityconference.com

DIVERSITY, EQUITY, AND INCLUSION CONFERENCE

March 16, 2016 OU oakland.edu/diversity/conference

e-CORNUCOPIA CONFERENCE: TEACHING WITH TECHNOLOGY

June 17, 2016 OU www2.oakland.edu/elis/conference.cfm

WORKSHOPS

We welcome you to register for any workshops that are of interest to you. All our workshops meet in our **Learning Studio in 200A Elliott Hall** and are offered at **12:00-1:30 p.m.** (unless noted otherwise).

Title	Date	Facilitator
Overview of Academic Service Learning (ASL) and OU Initiatives	Tues. Jan. 12	Bob Maxfield & Tanya Christ & Krista Malley
Transformative Teaching & Learning Conference Theme: Writing a Winning Proposal	Wed. Jan. 20	Judy Ableser
Enhancing Your Course with Academic Service Learning	Tues. Jan. 26	Tanya Christ
Models for Faculty Mentoring	Thurs. Jan. 28	Kathleen Moore & WISE@OU
Dealing with Classroom Behavior Challenges	Wed. Feb. 3	Judy Ableser
Emergency Preparedness and Behavior Concerns	Wed. Feb. 10	Chief Mark Gordon & Nancy Schmitz
Helping Students Develop Reading Expertise: Novice vs. Expert Readers	Tues. Feb. 16	Alice Horning
The Active Shooter on Campus	Wed. Feb. 17	Chief Mark Gordon
Writing an Effective Teaching Grant	Thurs. Mar. 3	Judy Ableser
Creating a New Learning Community	Thurs. Mar. 17	Judy Ableser
Tl;dr (Too Long; Didn't Read): Why Reading and Writing Matter	Wed. Mar. 23	Alice Horning
Supporting Students with Special Needs and Disability Support Services	Tues. Mar. 29	Linda Sisson & DSS team
Students with Autism Spectrum Disorder in College (ASD)	Tues. April 5	Janet Graetz, Linda Sisson & DSS team
Work-Life Balance: Managing your Service Commitments	Thurs. April 7	WISE@OU
Promoting ADA (Americans with Disabilities Act) and UDL (Universal Design of Learning) at OU	Wed. April 13	Judy Ablser & e-LIS
Color Code for Series:		
Academic Service Learning	Supporting Students	CAS Theme: Literacy
STEM	Creating a Safe Campus	Grants/Proposals

CETL WORKSHOP SERIES – WINTER 2016 SCHEDULE

Register for workshops at www.oakland.edu/cetl by clicking on **Workshops**. Lunch provided.
Certificates will be awarded for those who attend all workshops in a series.

ACADEMIC SERVICE LEARNING (ASL) SERIES

Title	Date	Facilitator
Overview of Academic Service Learning (ASL) and OU Initiatives	Tues. Jan. 12	B. Maxfield, T. Christ & K. Malley
Academic Service Learning (ASL) - Share Your Experiences, Ask Your Questions <i>(Coffee & Conversation 12–1 p.m.)</i>	Tues. Jan. 19	Scott Crabill & Krista Malley
Enhancing Your Course with ASL – Tips for Effectively Designing & Implementing ASL Into Your Course/Program	Wed. Sept. 16	Tanya Christ

GRANTS/PROPOSAL SERIES

Title	Date	Facilitator
Transformative Teaching & Learning Conference Theme: Writing a Winning Proposal	Wed. Jan. 20	Judy Ableser
Writing an Effective Teaching Grant	Thurs. March 3	Judy Ableser
Creating a New Learning Community for Student Success	Thurs. March 17	Judy Ableser

CREATING A SAFE CAMPUS – CLASSROOM BEHAVIORS & CAMPUS SAFETY SERIES

Title	Date	Facilitator
Dealing with Classroom Behavior Challenges	Wed. Feb. 3	Judy Ableser
Emergency Preparedness & Behavior Concerns	Wed. Feb. 10	Chief Mark Gordon & Nancy Schmitz
The Active Shooter on Campus	Wed. Feb. 17	Chief Mark Gordon
Guns on Campus? <i>(Coffee & Conversation 12– 1 p.m.)</i>	Wed. March 2	Chief Mark Gordon

LITERACY – CAS THEME SERIES

Title	Date	Facilitator
Helping Students Develop Reading Expertise	Tues. Feb. 16	Alice Horning
TL;dr (Too Long; Didn't Read): Why Reading & Writing Matter	Wed. March 23	Alice Horning

SUPPORTING STUDENTS WITH SPECIAL NEEDS ON CAMPUS SERIES

Title	Date	Facilitator
Supporting Students with Special Needs & Disability Support Services	Tues. March 29	Linda Sisson & DSS team
Students with Autism Spectrum Disorder in College	Tues. April 5	J. Graetz, L. Sisson & DSS Team
Promoting ADA (Americans with Disabilities Act) and UDL (Universal Design of Learning) at OU	Wed. April 13	Judy Ableser & e-LIS

STEM SERIES

Title	Date	Facilitator
Models for Faculty Mentoring	Thurs. Jan. 28	Kathleen Moore & WISE
Work-Life Balance: Managing your Service Commitments	Thurs. April 7	WISE@OU

COFFEE AND CONVERSATION

All sessions meet in the **Learning Studio in 200A Elliott Hall** at **12:00-1:00 p.m.** (unless noted otherwise). Register for Coffee and Conversations at www.oakland.edu/cetl by clicking on **Coffee and Conversation**. Coffee and dessert provided (feel free to bring your own lunch).

Title	Date	Facilitator
Coffee and Conversation with the President	Wed. Jan. 13	Judy Ableser
Share Your Experiences with ASL, Ask Your Questions About ASL	Tues. Jan. 19	Scott Crabill, Krista Malley
Guns on Campus?	Wed. March 2	Chief Mark Gordon
Coffee and Conversation with the Provost	Thurs. March 10	Judy Ableser

CHAIRS FORUM

Department Chairs are invited to attend these sessions.
Located in the Learning Studio (200A Elliott Hall), lunch will be provided.

Theme	Date	Time
Managing the Role of Chair: Learning from Our Peers	Monday, February 8	12:00 p.m. – 1:30 p.m.
Dealing with Difficult People and Situations	Tuesday, March 22	12:00 p.m. – 1:30 p.m.

ONGOING PROGRAMS and SERVICES

FACULTY DEVELOPMENT INSTITUTES

MENTORING EMERGING FACULTY

This group meets monthly to help support teaching and acclimation into campus life as an academic and provide connections with other faculty.

TEAM-BASED LEARNING

Receive foundational training and consultation in Team-Based Learning (TBL) from certified TBL Collaborative Trainer-Consultants (TBLC).

TEACHING WITH TECHNOLOGY FOR TECHNOPHOBES

Learn basic classroom and organizational technology skills at a slow and patient pace.

Learn more about Faculty Development Institutes at oakland.edu/cetl/faculty-development.

LEARNING COMMUNITIES

We are currently running four Learning Communities for faculty and staff. A call for new Learning Communities for the next academic year will be posted during the winter. To learn more about Learning Communities, visit our **Faculty Development** page.

TEACHING ETHICS ACROSS THE DISCIPLINES

Elysa White
Philosophy

P4 RESEARCH PROCRASTINATION PREVENTION PROGRAM FOR PEER RESEARCH

Sam Srauy, C&J
Per-Erik Milam, PHL

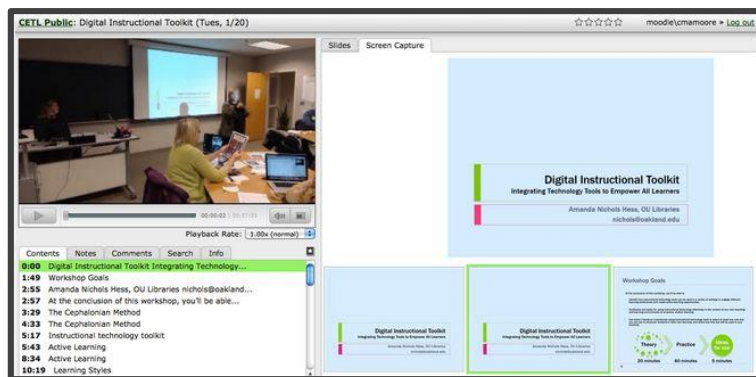
INTERPROFESSIONAL EDUCATION in the HEALTH PROFESSIONS

Cheryl Doucet-Riley
Nursing

HUMAN-ANIMAL INTERVENTIONS EDUCATION AND RESEARCH

Amy Johnson
Nursing

WORKSHOP RECORDINGS



We record our on-campus workshops for faculty and staff who would like to review these practical workshops at their own place and time. Our eSpace **CETL Workshop Resources** page is open to all OU faculty. To browse the recordings, or go back to a discussion you were a part of and watch them, visit oakland.edu/cetl and click on **Workshops**.

WEEKLY SCHEDULER

To lighten the email load but keep you apprised of timely events for faculty and staff, CETL sends a **Next Week at CETL** notice every Wednesday to help you plan for events a week ahead of time. From this email you can register for workshops, sign up for Coffee and Conversations, and look into special events and funding opportunities. If you do not receive these emails, please visit oakland.edu/cetl/signmeup to stay informed.

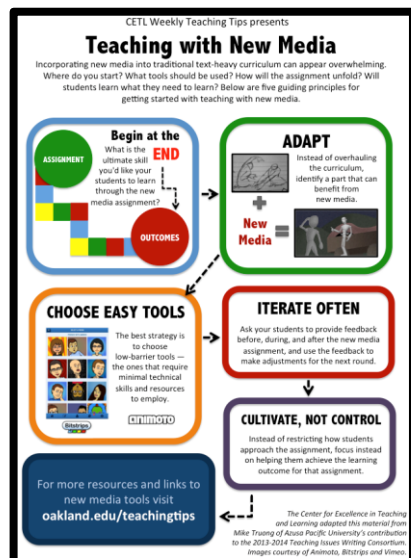
Next Week at CETL

Click on each day to register for the event. To review full workshop descriptions, click [here](#), then click each workshop title for more information.

MON NOV. 23	
TUES NOV. 24	<p>CLICK TO REGISTER FOR THE WORKSHOP</p> <p>Balancing Teaching & Research in STEM Facilitated by WISE@OU</p> <p>Hear from a panel who have balanced teaching and research in STEM effectively, and learn strategies to help balance your own personal life. <i>Lunch provided. 12:00-1:30 p.m.</i></p>
WED NOV. 25	

VIRTUAL FACULTY DEVELOPMENT

WEEKLY TEACHING TIPS



Weekly Teaching Tips, landing in inboxes and popping up on Facebook, offer a quick-to-implement teaching strategy. Weekly Teaching Tips are inspired by our OU community and faculty across the country. Since we cannot sneak into all of our colleagues' classes, let's continue sharing Weekly Teaching Tips from OU faculty.

Sign up for Weekly Teaching Tips:
oakland.edu/cetl/signmeup

If you have a strategy for assessing group work, using tech tools or improving study skills, offer us a quick write-up, and we may turn it into a CETL Weekly Teaching Tip.

Submit your teaching tip to oakland.edu/teachingtips.

Teaching Tips on Facebook CETL's Weekly Teaching Tips, along with reminders and other resources, are available on our Facebook page: **The Center for Excellence in Teaching and Learning at OU.**



We're on Facebook.
"Like" us for teaching tips, resources, and collaboration.

ONLINE MODULES FOR TEACHING AND LEARNING

CETL offers online curriculum on the basics of teaching and learning theory, from constructive alignment to course design. These modules are self-paced and often linked to our university resources and workshops. To browse this curriculum, visit **Virtual Faculty Development** at oakland.edu/cetl.

GRANTS and CALLS

EXCELLENCE IN TEACHING AND LEARNING GRANT

CETL is pleased to announce a grant to enhance excellence in teaching and learning that focuses on student engagement, active learning, meeting learning outcomes and student success with a focus on the scholarship of teaching and learning. Proposals must include evidence-based practices in teaching and learning and detail how these strategies will be implemented and evaluated. Up to five grants of \$3,000 each will be awarded. Tenure-track, tenured faculty, full-time teaching instructors (i.e. special instructors, full-time adjunct and visiting professors), special lecturers and part-time instructors who have been taught a minimum of 24 credits at OU may apply for the grant. **Call for proposals: February 19 – March 31, 2016.** Visit oakland.edu/cetl/grants for more information.

Learn more about how to write a successful grant proposal at the

Writing a Teaching Grant Workshop

Thursday, March 3
12-1:30 p.m.
Lunch provided.

Register on
our **Workshops** page

2016-2017 FACULTY FELLOWS

This exciting opportunity recognizes the teaching excellence of two full-time faculty members who can share their passion and interest in teaching and learning with others across the campus. Faculty Fellows receive one course release per semester for their service with CETL. Call for applications is February 8 – March 14. To learn more about faculty fellows and review past faculty fellows, visit oakland.edu/cetl/about.

LILLY CONFERENCE 2016 PROPOSALS AND TRAVEL GRANTS

CETL is a proud sponsor of the Lilly North Conference in Traverse City, MI, a national teaching and learning conference series. Every year, CETL offers travel grants to faculty, especially first-time attendees and presenters. We will announce this call in the spring once applicants receive news of their proposal status. The next Lilly Conference will be held in **October 2016**. Call for Travel Grant Applications will be sent in April.

CETL ADVISORY BOARD

CETL works with an advisory board representing faculty and staff membership from across the campus. We extend our appreciation for all of the support and guidance. Current membership includes the following:

Diane Underwood, e-LIS	Bill Solomonson, SEHS	Krista Malley, Student Success
Sara Webb, First Year Advising	Rod Nyland, School of Medicine	Manager
Julia Rodriquez, Library	John Corso, Art and Art History	Mark Simon, SBA
Chris Kobus, Engineering	David Hammontree, Writing	Christina Moore, CETL/Writing
Kathleen Spencer, Nursing	and Rhetoric	and Rhetoric
Kim Holka, Health Sciences	Tom Raffel, Biology	Susan Awbrey, Provost's Office

We will be looking for new faculty to join the board for next year. If you are passionate about teaching and learning, please consider serving on our Advisory Board.

IN CLOSING

All of the programs and services at CETL are only possible through the extraordinary team effort of the CETL staff, administration and advisory board. My gratitude and appreciation is extended to Suzanne Flattery, our CETL office assistant, Marian McClellan our account manager, Christina Moore, our media manager, our student assistant, Victoria Kendziora, our Faculty Fellows, Kathleen Spencer and John Corso and the entire advisory board. In addition, I thank Susan Awbrey, Senior Associate Provost, for her guidance and support. Most importantly, I thank all the faculty, staff and graduate students who participate in CETL events for their commitment to teaching and learning excellence.

Respectfully,
Judy, CETL Director